

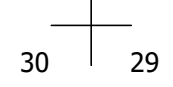
THIS MAP WAS PREPARED FOR ASSESSMENT PURPOSE ONLY.

Upper Left:
123°26'55"W 43°12'N
4135220E 572634N ft

NW1/4 SEC.29 T.27S. R.06W. W.M.
DOUGLAS COUNTY

Date Exported 2024-03-20

270629B

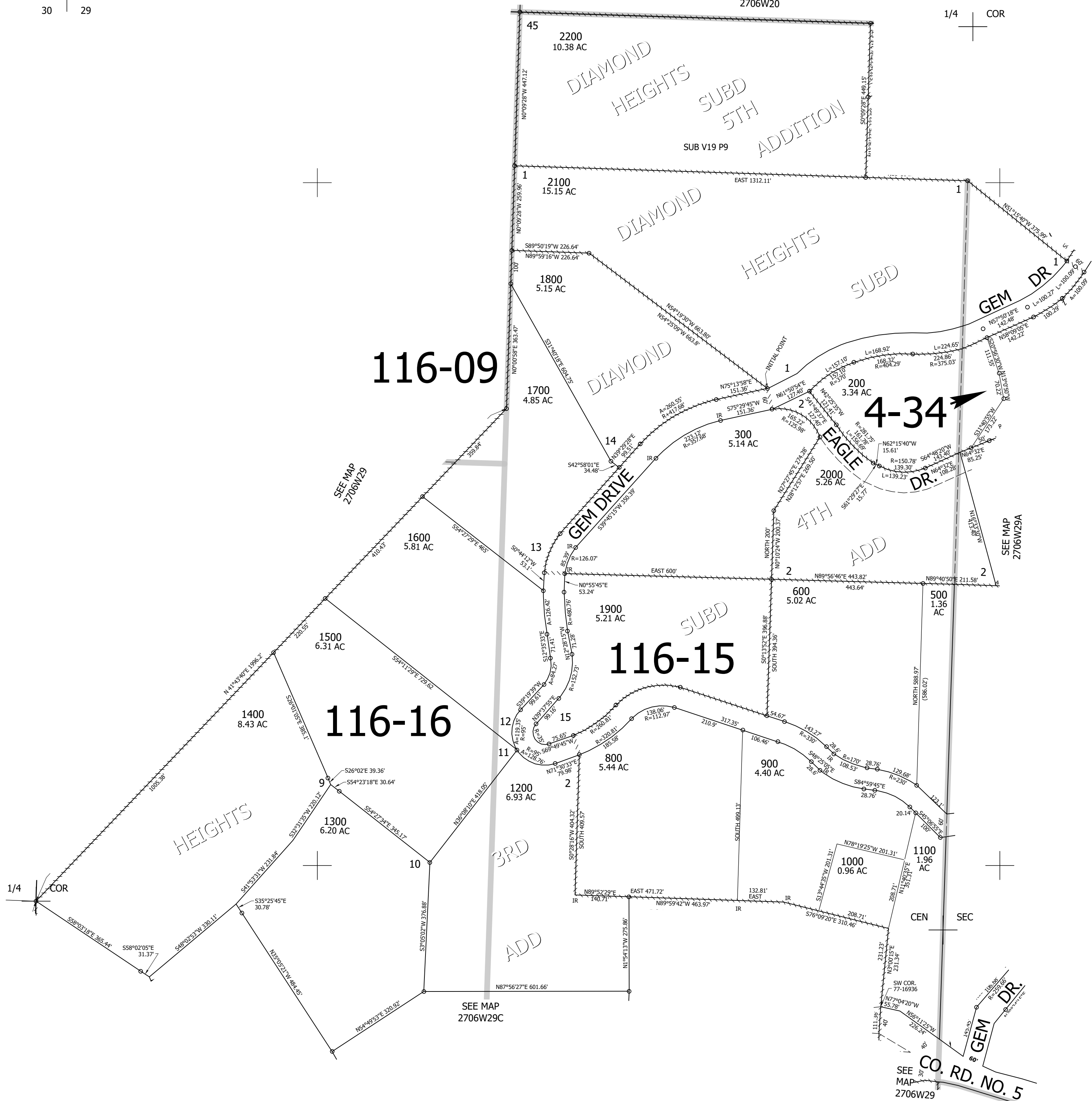


1" = 200'

SEE MAP
2706W20

1/4 COR

CANCELLED NOS:
100 700 400 2201



116-09

4-34

116-15

116-16

1/4 COR

SEE MAP
2706W29C

SEE MAP
2706W29

CO. RD. NO. 5

270629B

Lower Right:
123°26'11"W 43°11'27"N
4139144E 569156N ft