

THIS MAP WAS PREPARED FOR ASSESSMENT PURPOSE ONLY.

Upper Left:
123°25'47"W 43°12'3"N
4140315E 572772N ft

NW1/4 SEC.28 T.27S. R.06W. W.M.
DOUGLAS COUNTY
1" = 200'

Date Exported 2026-04-23

270628B

CANCELLED NOS:
901 1000 400
100 1301 1401
500 402 301
2401 801 902

SEE MAP
2706W21

1/4 COR

PARCEL 3

4-34

2019-18

PARCEL 1
NO.

PARCEL 2

DIAMOND HEIGHTS

SEE M110-65

ADDITION

SEE MAP
2706W29A

DIAMOND HEIGHTS
SUB
2ND ADDITION

JADE

SEE M114-9

PHASE 13

SEE M112-25

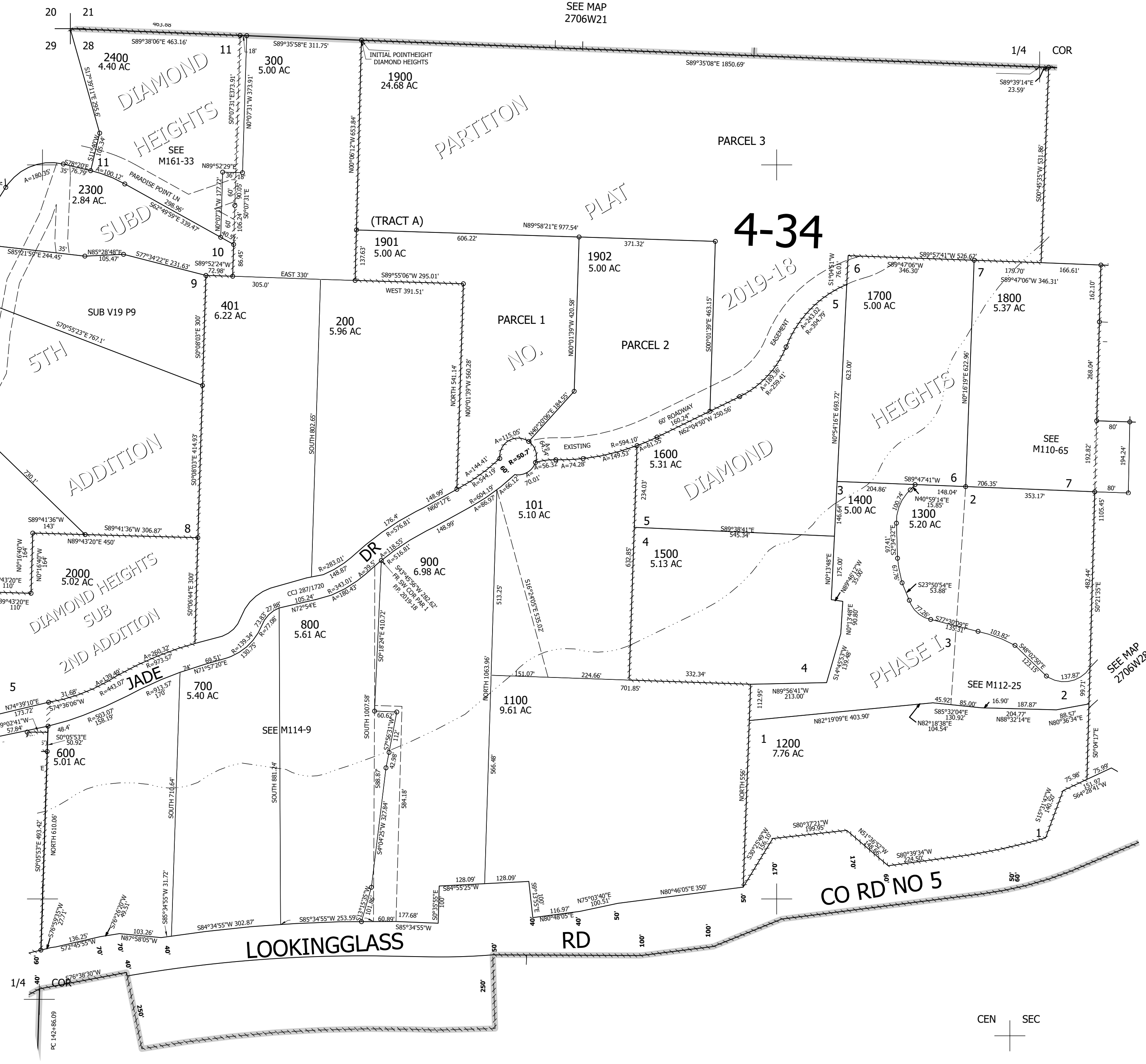
SEE MAP
2706W28

LOOKINGGLASS

RD

CO RD NO 5

CEN SEC



270628B

Lower Right:
123°24'52"W 43°11'29"N
4144242E 569172N ft