

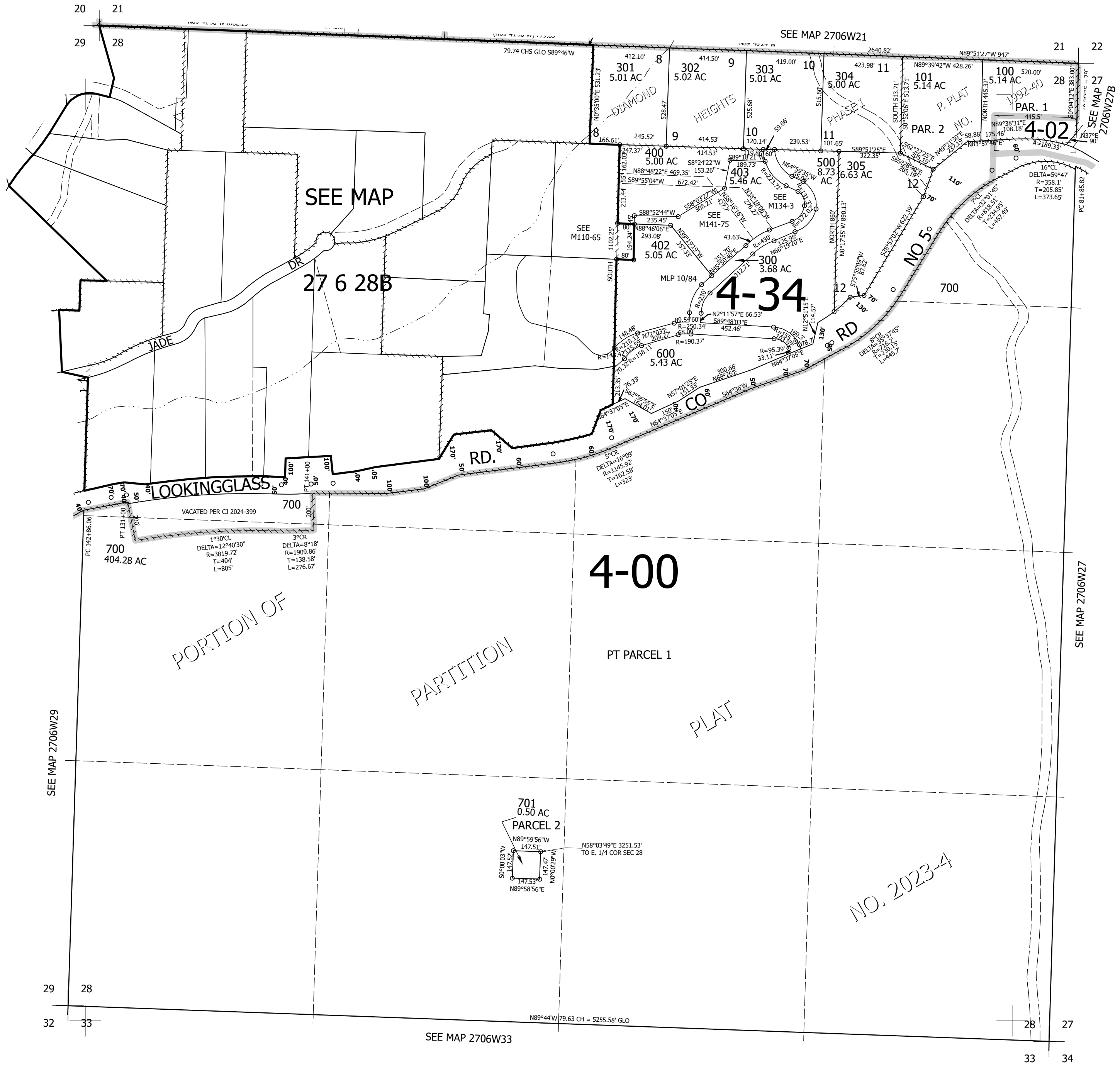
THIS MAP WAS PREPARED FOR ASSESSMENT PURPOSE ONLY.

Upper Left:  
123°25'56"W 43°12'6"N  
4139600E 573101N ft

SEC.28 T.27S. R.06W. W.M.  
DOUGLAS COUNTY  
1" = 400'

Date Exported 2025-09-09

CANCELLED NOS:  
200 404 405  
700A1 701A1 401



Lower Right:  
123°24'7"W 43°11'N  
4147449E 566146N ft