

THIS MAP WAS PREPARED FOR ASSESSMENT PURPOSE ONLY.

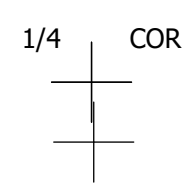
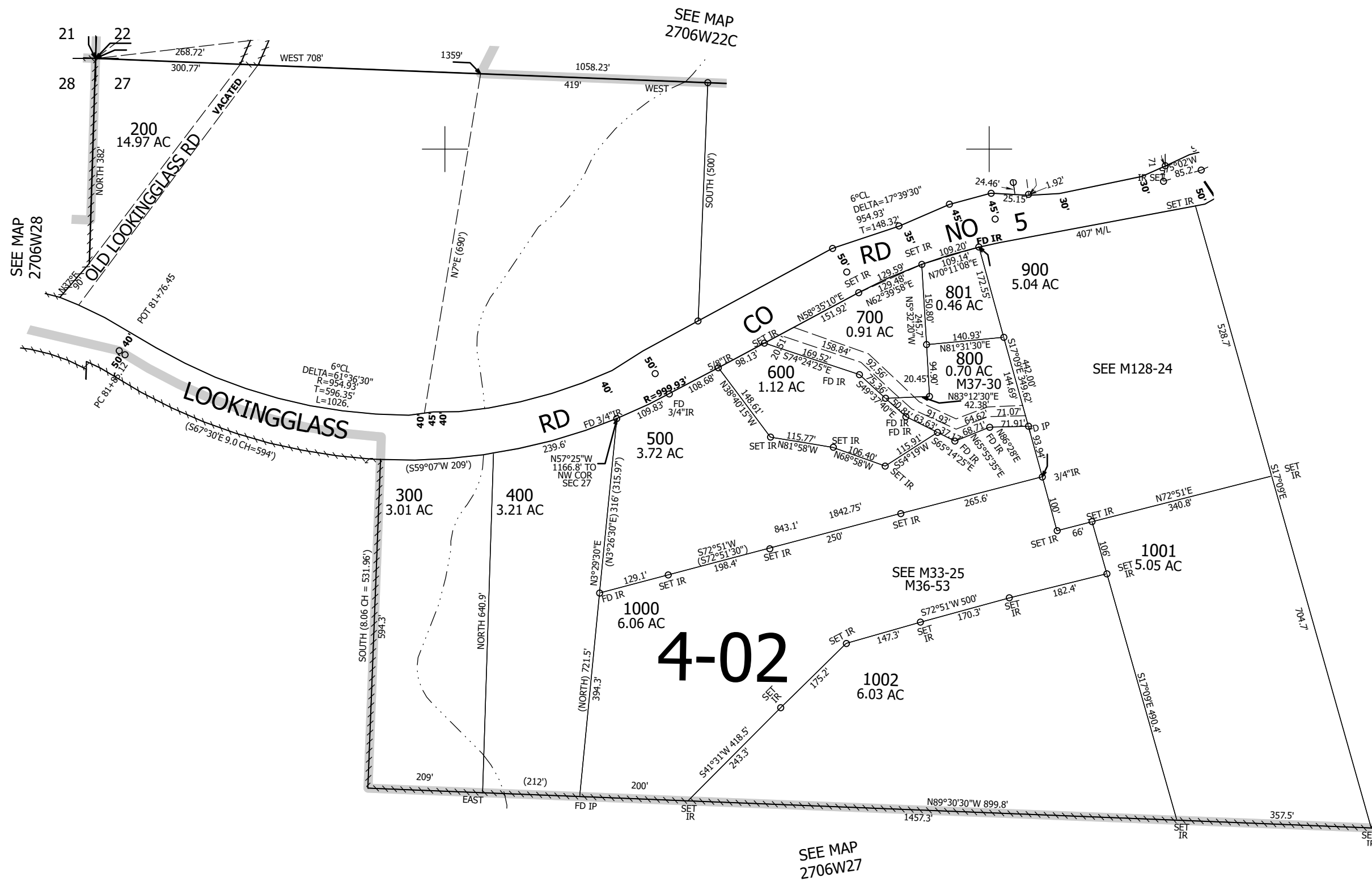
Upper Left:
123°24'37"W 43°12'9"N
4145512E 573202N ft

NW1/4 SEC.27 T.27S. R.06W. W.M.
DOUGLAS COUNTY
1" = 200'

Date Exported 2025-02-12

270627B

CANCELLED NOS:
101 100



270627B

Lower Right:
123°23'42"W 43°11'36"N
4149437E 569724N ft