

THIS MAP WAS PREPARED FOR ASSESSMENT PURPOSE ONLY.

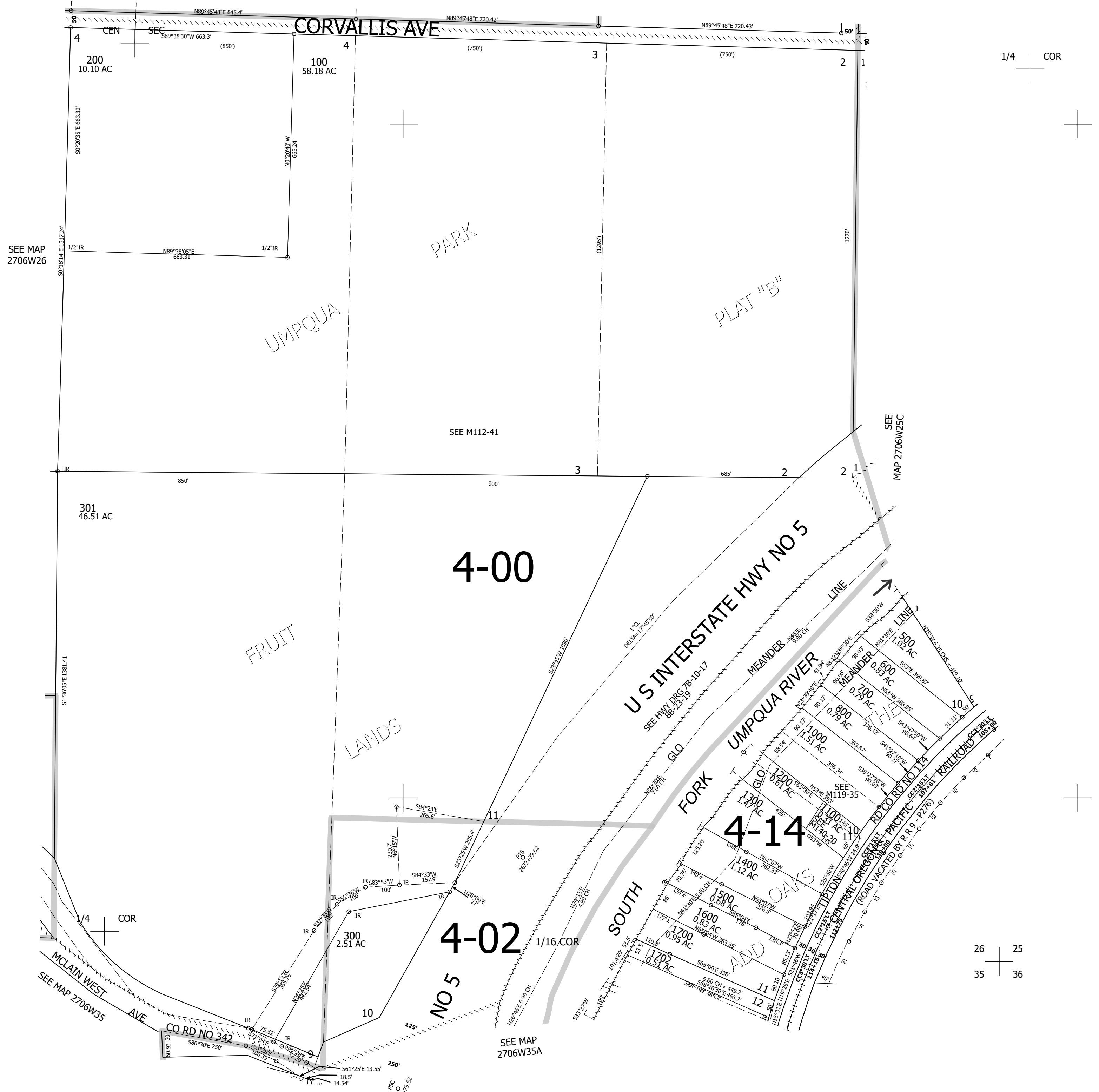
Upper Left:  
123°22'49"W 43°11'35"N  
4153392E 569450N ft

SE1/4 SEC.26 T.27S. R.06W. W.M.  
DOUGLAS COUNTY  
1" = 200'

Date Exported 2024-05-08

270626D

CANCELLED NOS:  
1701 301M1 400  
900



1/4 COR

26 25  
35 36

4-00

4-02

4-14

270626D

Lower Right:  
123°21'54"W 43°11'2"N  
4157316E 565973N ft