

THIS MAP WAS PREPARED FOR ASSESSMENT PURPOSE ONLY.

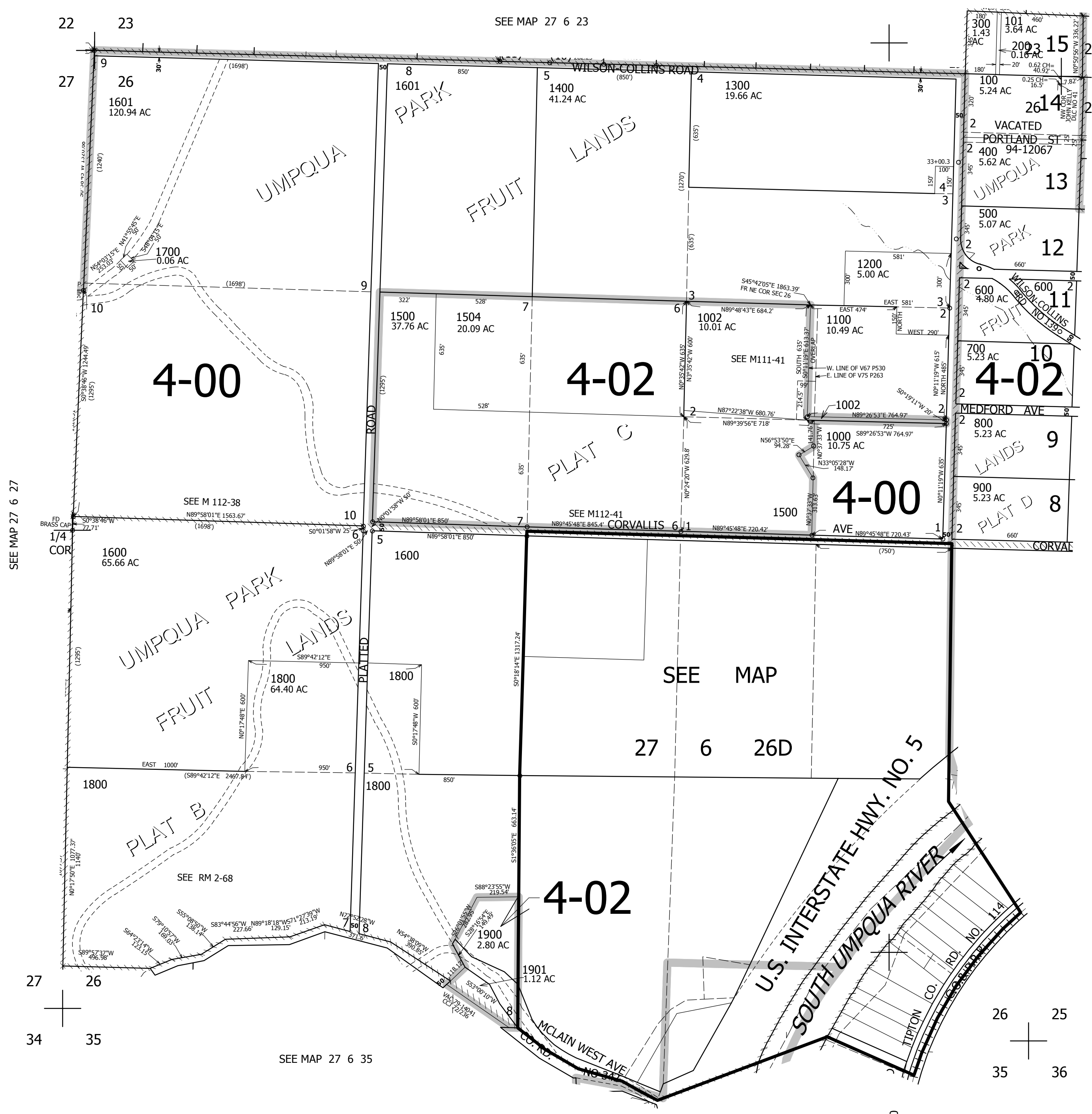
SEC.26 T.27S. R.6W. W.M. DOUGLAS COUNTY

1" = 400'

REVISED ON 1-28-21

27 6 26 & INDEX

SEE MAP 27 6 23



CANCELLED NO'S 1502 1501 1503 1001 1602 1603

SEE MAP 27 6 25BB

SEE MAP 27 6 25BC

SEE MAP 27 6 25C

567,000

27 6 26 & INDEX

SEE MAP 27 6 27

SEE MAP 27 6 35

SEE MAP 27 6 35A

4,156,000