

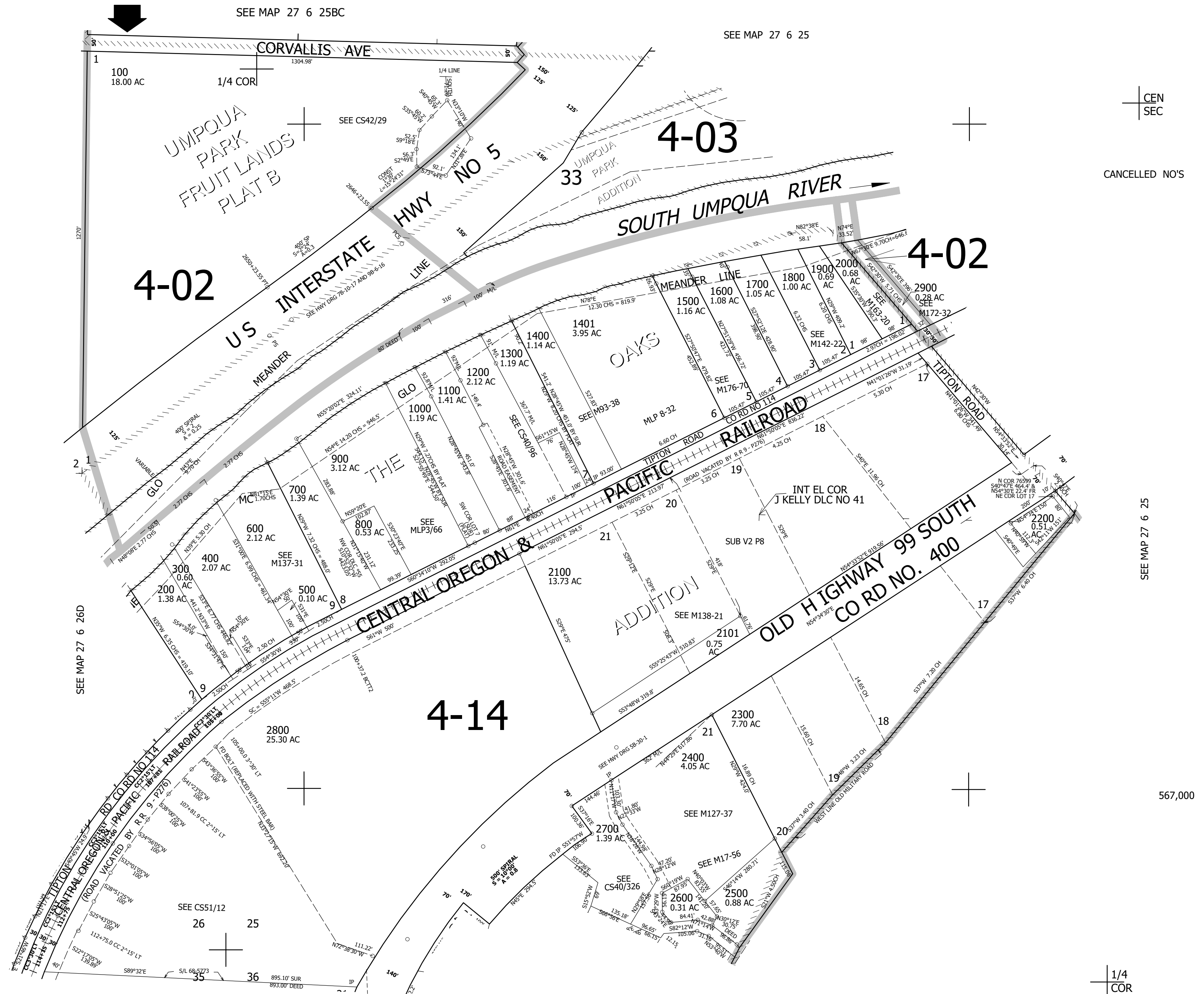
THIS MAP WAS PREPARED FOR ASSESSMENT PURPOSE ONLY.

SW1/4 SEC.25 T.27S. R.6W. W.M. DOUGLAS COUNTY

REVISED ON 2-2-22

27 6 25C

1" = 200'



CEN SEC

CANCELLED NO'S

SEE MAP 27 6 25

567,000

1/4 COR

27 6 25C

4,159,000

SEE MAP 27 6 36B

SEE MAP 27 6 26D

SEE MAP 27 6 25BC

SEE MAP 27 6 25