

THIS MAP WAS PREPARED FOR ASSESSMENT PURPOSE ONLY.

SW1/4 NW1/4 SEC.25 T.27S. R.6W. W.M. DOUGLAS COUNTY

REVISED ON 6-4-08

27 6 25BC

1" = 100'

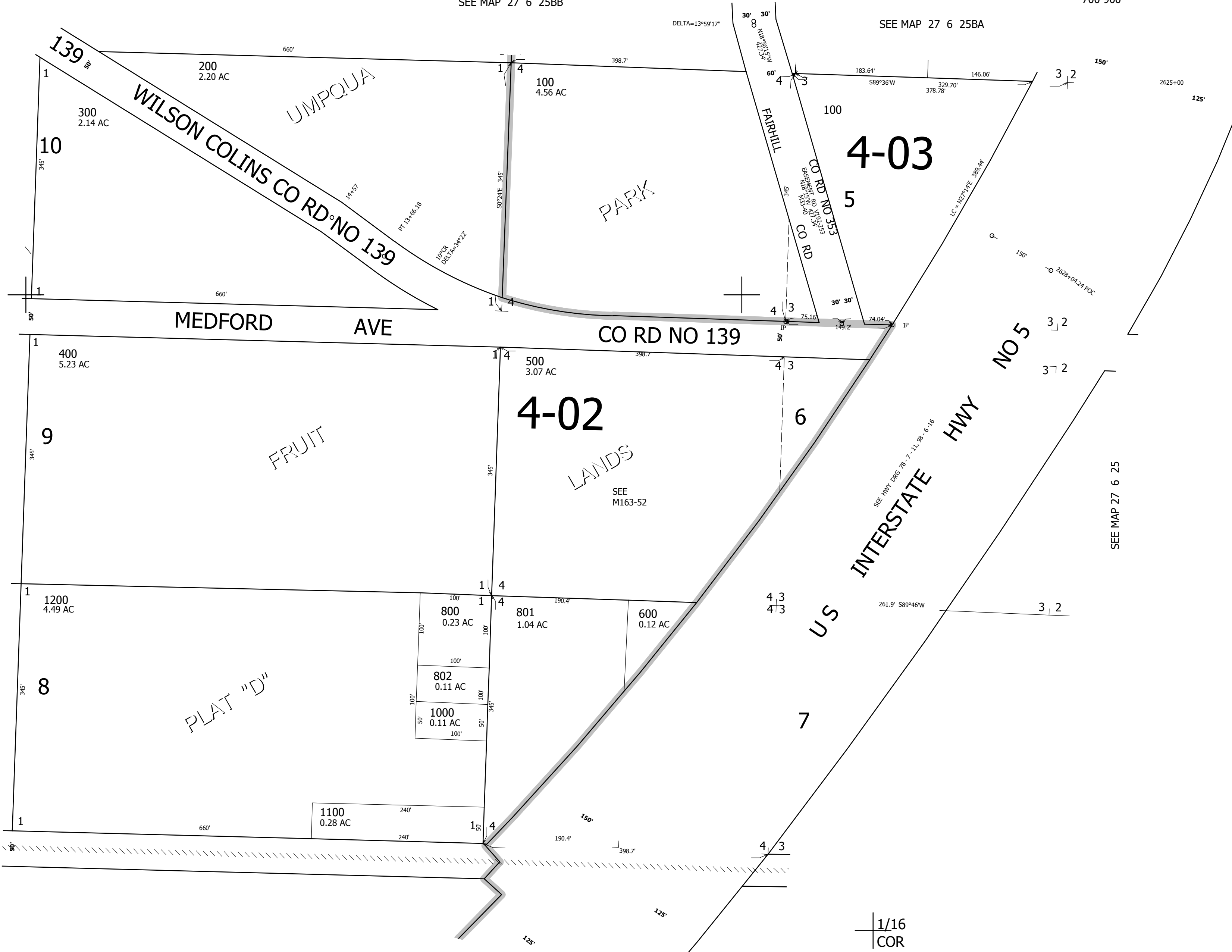
1/16 COR

1/16 COR

CANCELLED NO'S 700 900

SEE MAP 27 6 25BB

SEE MAP 27 6 25BA



SEE MAP 27 6 26

SEE MAP 27 6 25

SEE MAP 27 6 25C

4,158,000

569,000

27 6 25BC