

THIS MAP WAS PREPARED FOR ASSESSMENT PURPOSE ONLY.

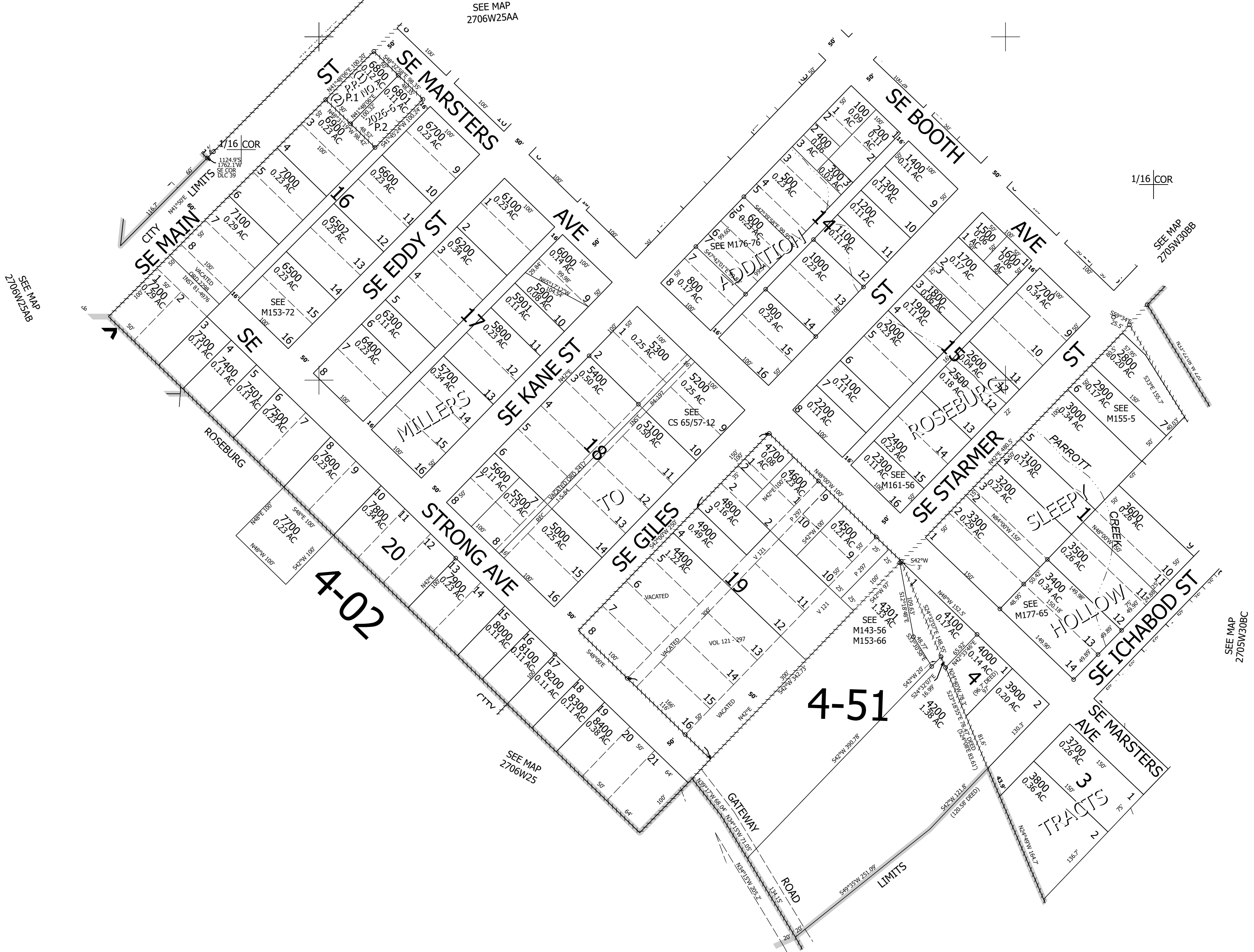
Upper Left:
123°21'13"W 43°11'50"N
4160490E 570729N ft

SE1/4 NE1/4 SEC.25 T.27S. R.06W. W.M.
DOUGLAS COUNTY
1" = 100'

Date Exported 2026-02-09

270625AD
Roseburg

CANCELLED NOS:
700 4501 6301
8000M1 4300 4401
4901 6501 5301



SEE MAP
2706W25AB

SEE MAP
2706W25AA

1/16 COR

SEE MAP
2705W30BB

SEE MAP
2705W30BC

SEE MAP
2706W25

1/16 COR

Lower Right:
123°20'46"W 43°11'33"N
4162462E 568991N ft

270625AD
Roseburg