

THIS MAP WAS PREPARED FOR ASSESSMENT PURPOSE ONLY.

SEE MAP 27 6 25BA

1/16 COR

SEE MAP 27 6 25

SEE MAP 27 6 25

SEE MAP 27 6 24DC

REVISED ON 122-21

1/16 COR

SEE MAP 27 6 25AA

1/16 COR

4,161,000

27 6 25AB ROSEBURG

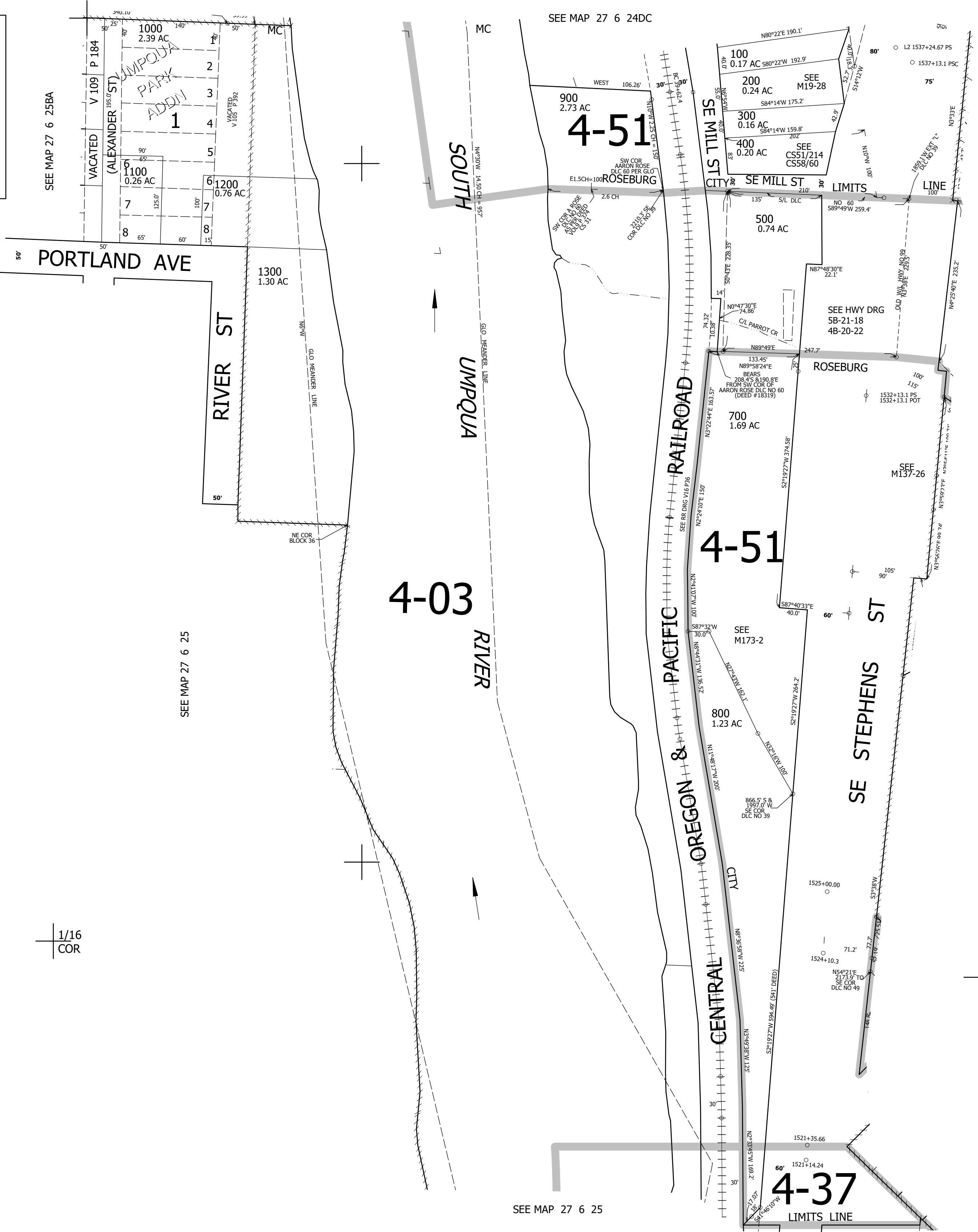
CANCELLED NO'S 600 700A1

NW1/4 NE1/4 SEC.25 T.27S. R.6W. W.M. DOUGLAS COUNTY

1" = 100'

570,500

27 6 25AB ROSEBURG



PORTLAND AVE

RIVER ST

SOUTH RIVER

UMPQUA RIVER

CENTRAL OREGON & PACIFIC RAILROAD

SE MILL ST

SE STEPHENS ST

4-51

4-03

4-51

4-37

