

THIS MAP WAS PREPARED FOR ASSESSMENT PURPOSE ONLY.

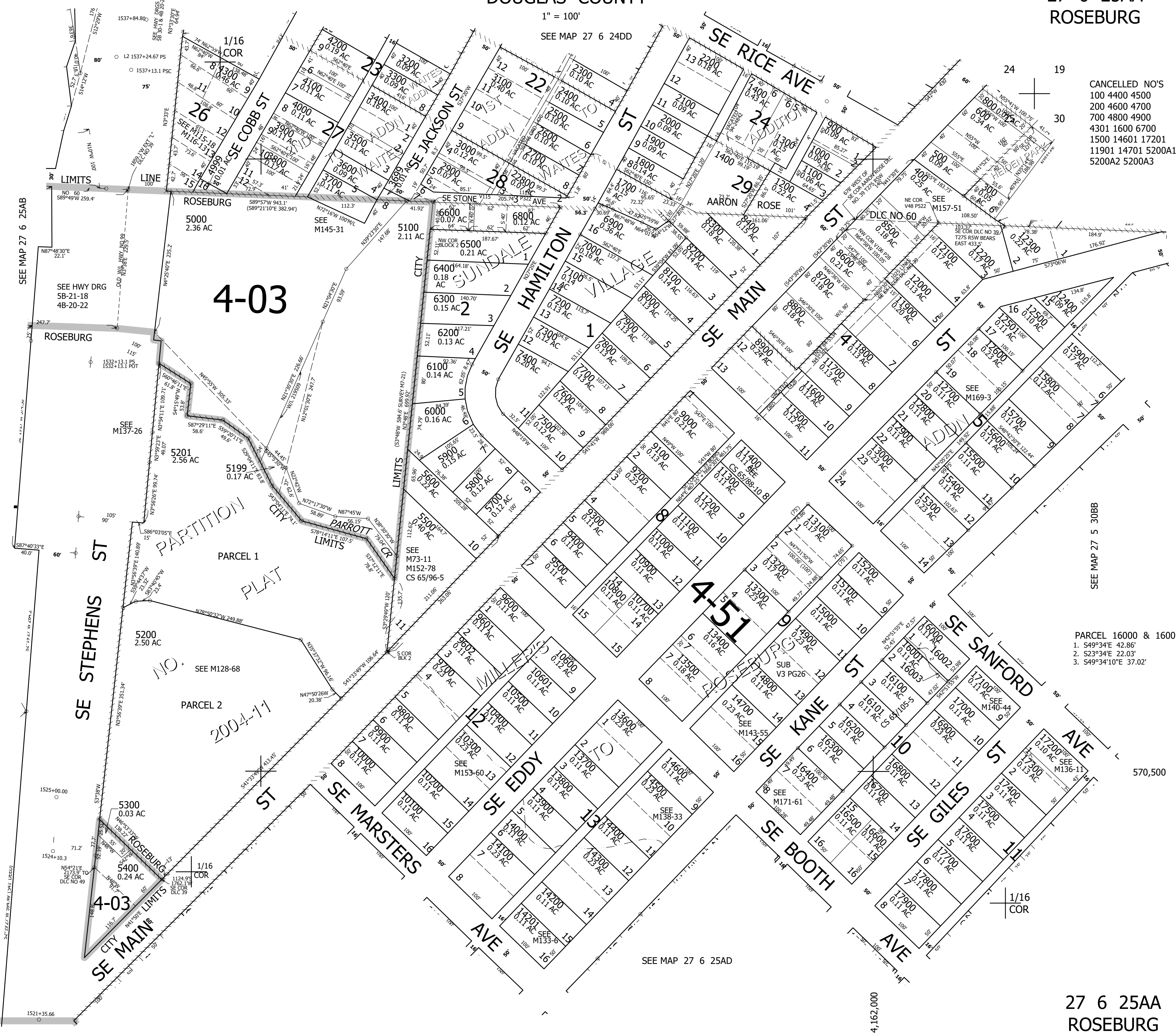
NE1/4 NE1/4 SEC.25 T.27S. R.6W. W.M.  
DOUGLAS COUNTY

REVISED ON  
2-13-20

27 6 25AA  
ROSEBURG

1" = 100'  
SEE MAP 27 6 24DD

CANCELLED NO'S  
100 4400 4500  
200 4600 4700  
700 4800 4900  
4301 1600 6700  
1500 14601 17201  
11901 14701 5200A1  
5200A2 5200A3



SEE MAP 27 5 30BB

PARCEL 16000 & 16001  
1. S49°34'E 42.86'  
2. S23°34'E 22.03'  
3. S49°34'10"E 37.02'

570,500

SEE MAP 27 6 25AD

27 6 25AA  
ROSEBURG