

THIS MAP WAS PREPARED FOR ASSESSMENT PURPOSE ONLY.

Upper Left:
123°21'28"W 43°12'14"N
4159497E 573250N ft

SW1/4 SE1/4 SEC.24 T.27S. R.06W. W.M.
DOUGLAS COUNTY
1" = 100'

Date Exported 2026-03-10

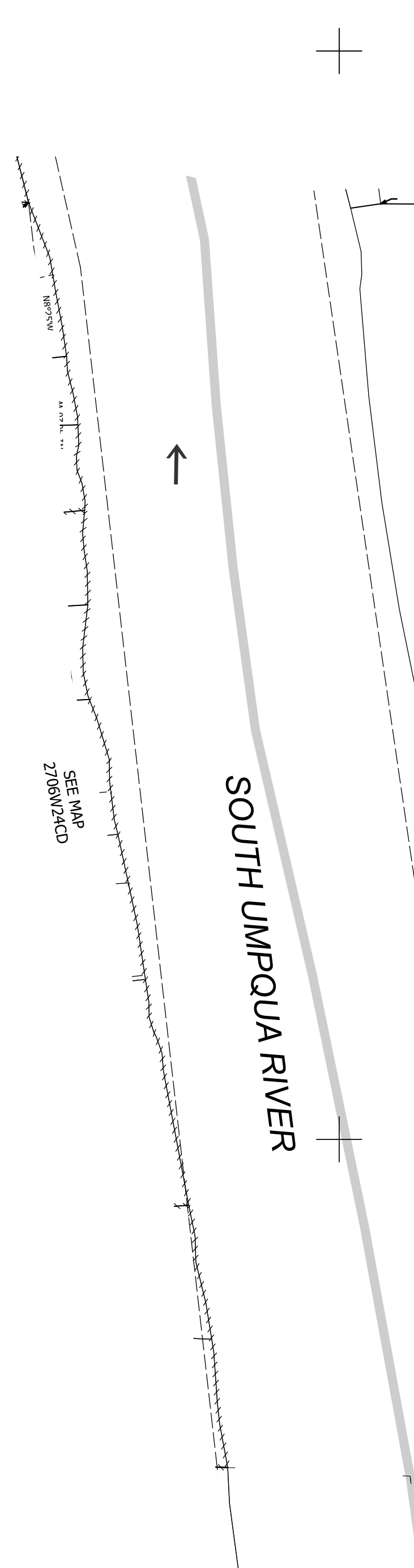
270624DC
Roseburg

CANCELLED NOS:
1401 1400 1500
7400 7500 5300A1
4202

1/16 COR

SEE MAP
2706W24DB

SEE MAP
2706W24DA



CENTRAL OREGON & PACIFIC RAILROAD

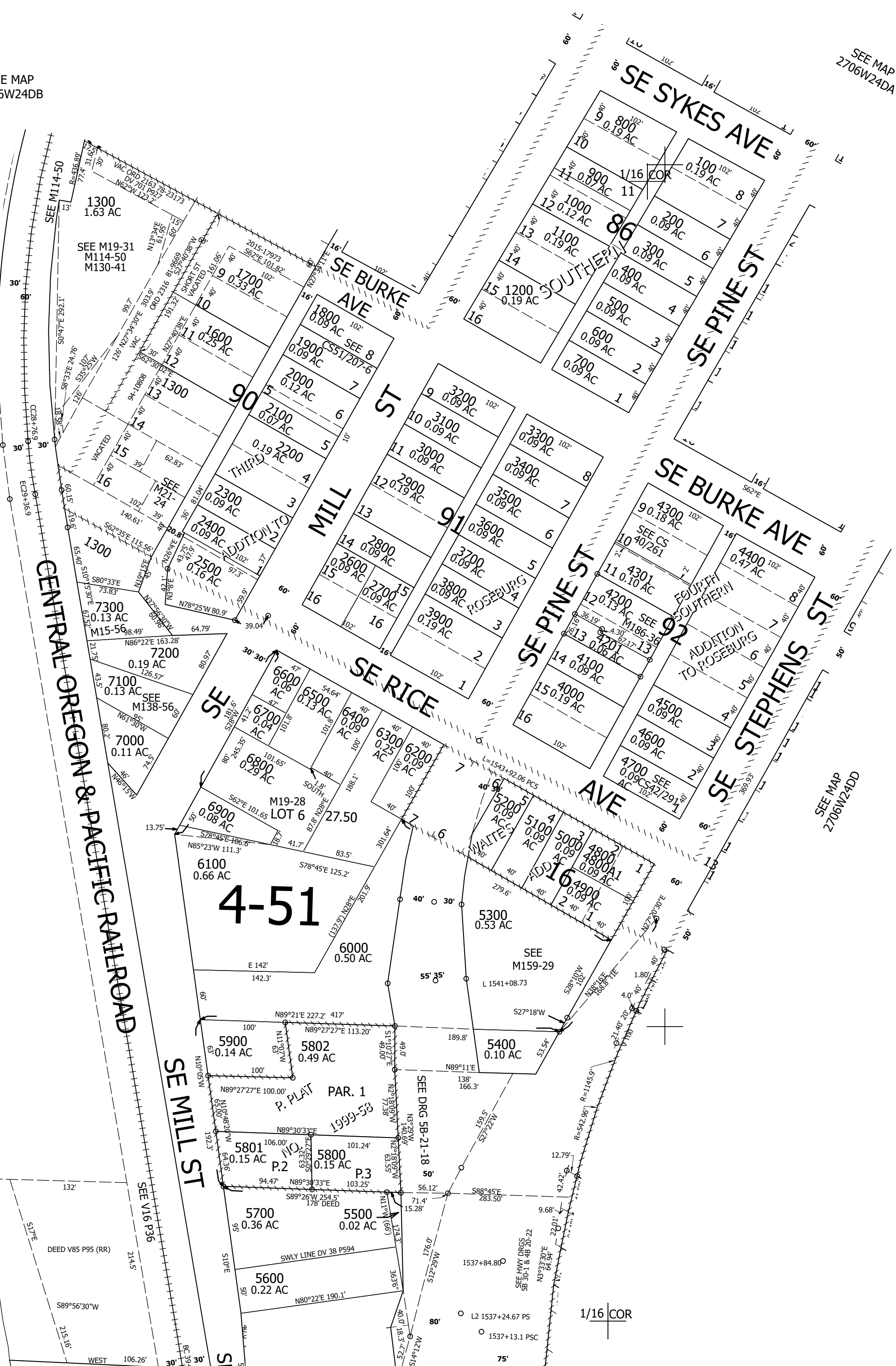
SOUTH UMPQUA RIVER

1/4 COR

MC

SEE MAP
2706W25AB

1/16 COR



270624DC
Roseburg

Lower Right:
123°21'11"W 43°11'58"N
4161469E 571511N ft