

THIS MAP WAS PREPARED FOR ASSESSMENT PURPOSE ONLY.

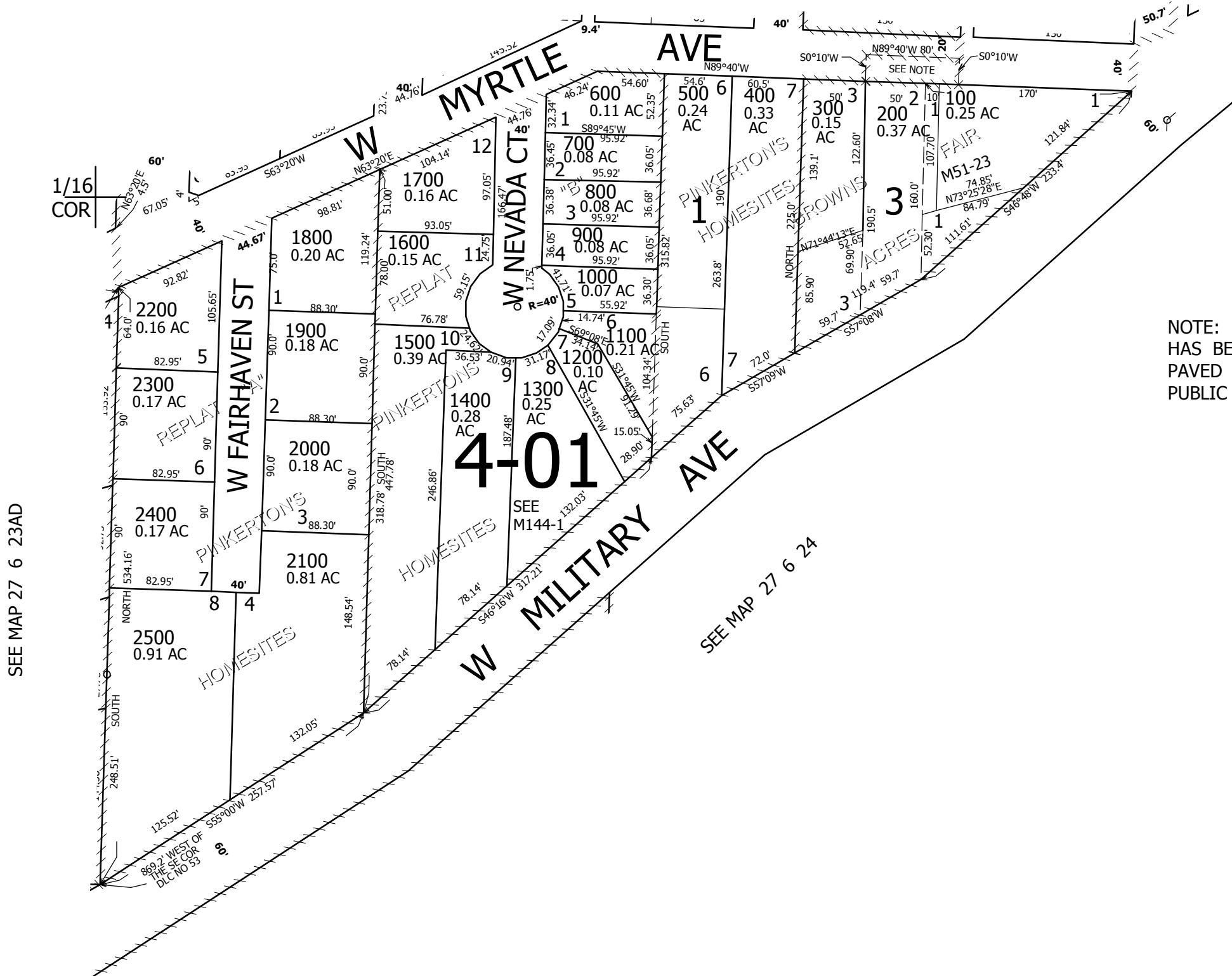
SW1/4 NW1/4 SEC.24 T.27S. R.6W. W.M. DOUGLAS COUNTY

REVISED ON
10-5-16

27 6 24BC ROSEBURG

1" = 100'

SEE MAP 27 6 24BB



NOTE: PORTION OF W MYRTLE AVE.
HAS BEEN VACATED BUT IS
PAVED & BEING USED AS
PUBLIC R/W

CANCELLED NO'S

575,000

4,158,000

27 6 24BC ROSEBURG