

THIS MAP WAS PREPARED FOR ASSESSMENT PURPOSE ONLY.

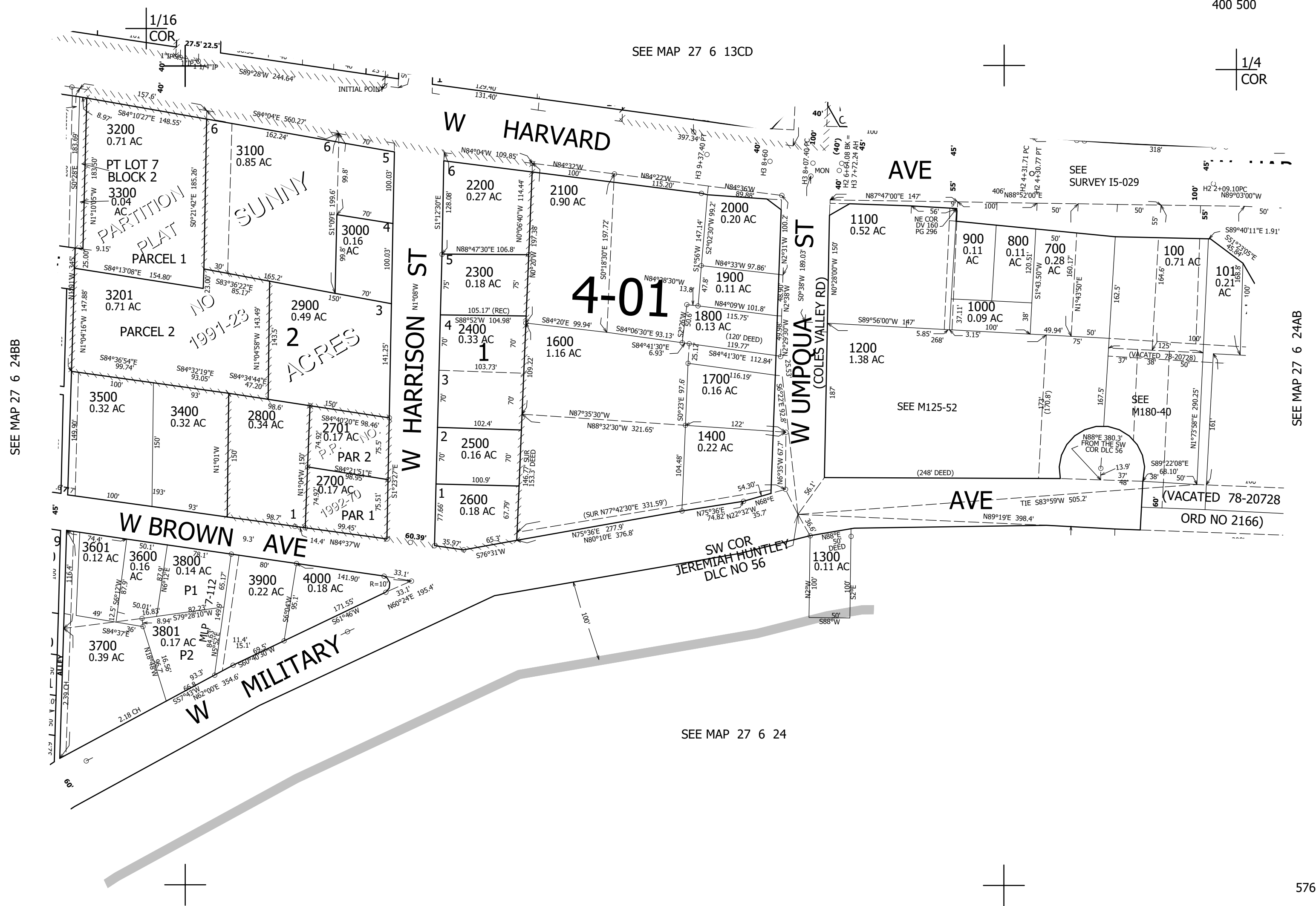
NE1/4 NW1/4 SEC.24 T.27S. R.6W. W.M.  
DOUGLAS COUNTY

REVISED ON  
10-5-16

27 6 24BA  
ROSEBURG

1" = 100'

CANCELLED NO'S  
201 600 1500  
301 200 300  
400 500



576,000

4,159,500

27 6 24BA  
ROSEBURG