

THIS MAP WAS PREPARED FOR ASSESSMENT PURPOSE ONLY.

Upper Left:
123°21'12"W 43°12'53"N
4160785E 577135N ft

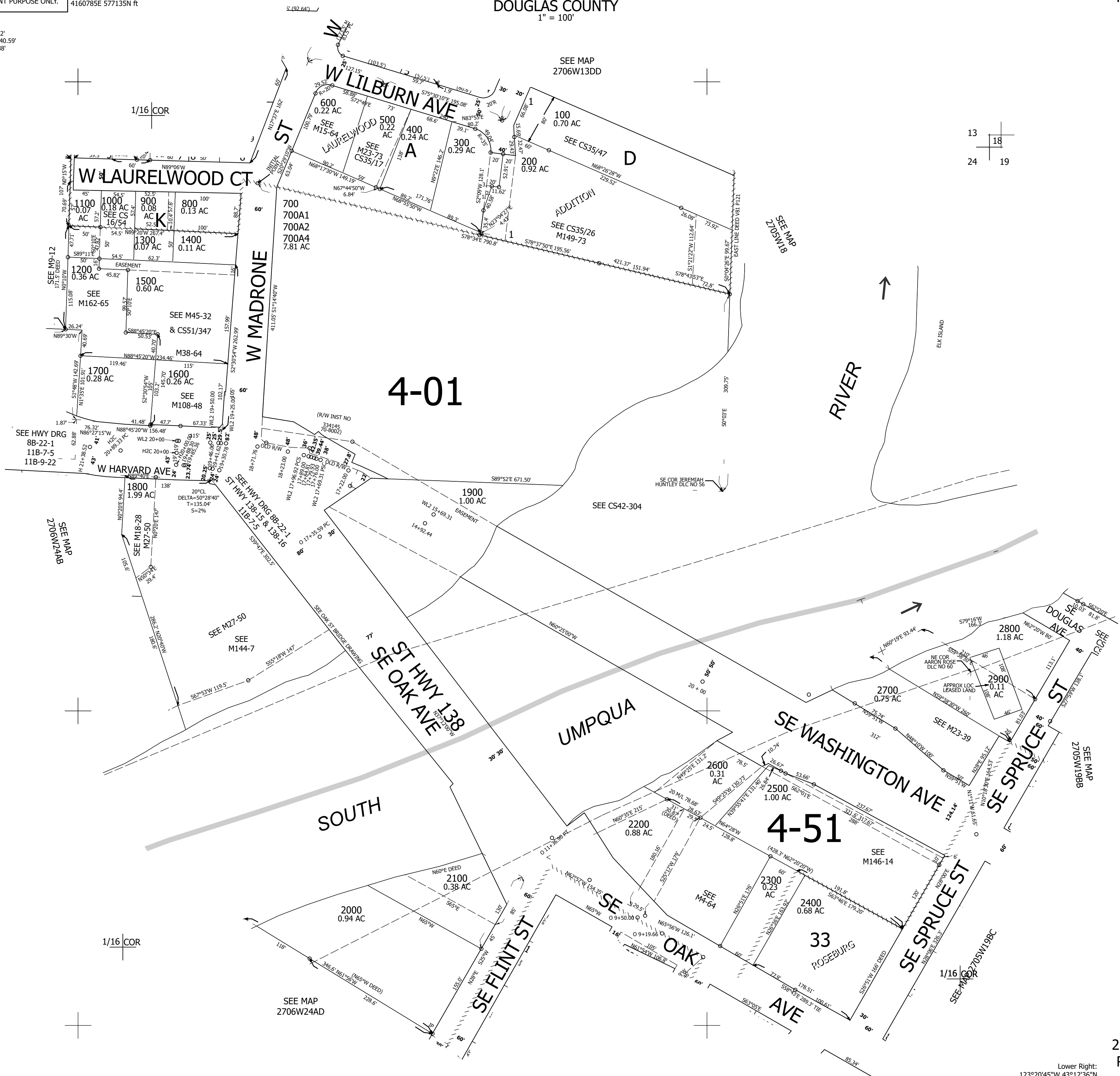
NE1/4 NE1/4 SEC.24 T.27S. R.06W. W.M.
DOUGLAS COUNTY
1" = 100'

Date Exported 2025-12-02

270624AA
Roseburg

CANCELLED NOS:
201 1201 2900A1
700A3

- PARCEL 300
1. S2°09'W 39.72'
 2. N14°04'06"E 40.59'
 3. N87°51'W 8.38'



13	18
24	19

1/16 COR

1/16 COR

270624AA
Roseburg

Lower Right:
123°20'45"W 43°12'36"N
4162757E 575396N ft