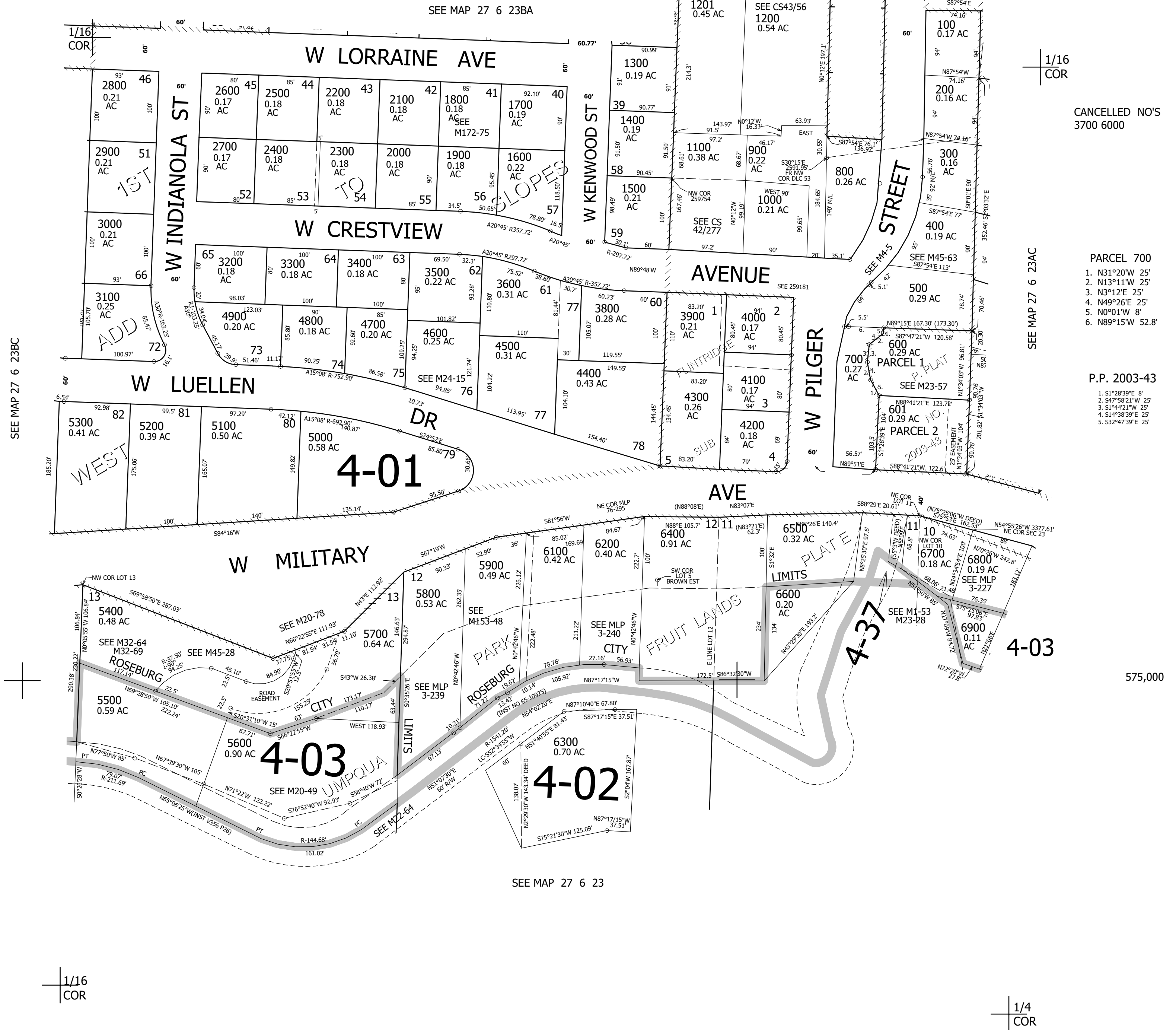
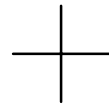


THIS MAP WAS PREPARED FOR ASSESSMENT PURPOSE ONLY.

SE1/4 NW1/4 SEC.23 T.27S. R.6W. W.M.  
DOUGLAS COUNTY  
1" = 100'

REVISED ON  
9-14-16

27 6 23BD  
ROSEBURG



CANCELLED NO'S  
3700 6000

PARCEL 700  
1. N31°20'W 25'  
2. N13°11'W 25'  
3. N3°12'E 25'  
4. N49°26'E 25'  
5. N0°01'W 8'  
6. N89°15'W 52.8'

P.P. 2003-43  
1. S1°28'39"E 8'  
2. S47°58'21"W 25'  
3. S1°44'21"W 25'  
4. S14°38'39"E 25'  
5. S32°47'39"E 25'

SEE MAP 27 6 23BC

SEE MAP 27 6 23AC

575,000

SEE MAP 27 6 23

1/16  
COR

1/4  
COR

4,154,000

27 6 23BD  
ROSEBURG