

THIS MAP WAS PREPARED FOR ASSESSMENT PURPOSE ONLY.

Upper Left:
123°23'21"W 43°12'39"N
4151237E 576069N ft

SW1/4 NW1/4 SEC.23 T.27S. R.06W. W.M.
DOUGLAS COUNTY
1" = 100'

SEE MAP
2706W23BB

Date Exported 2026-03-11

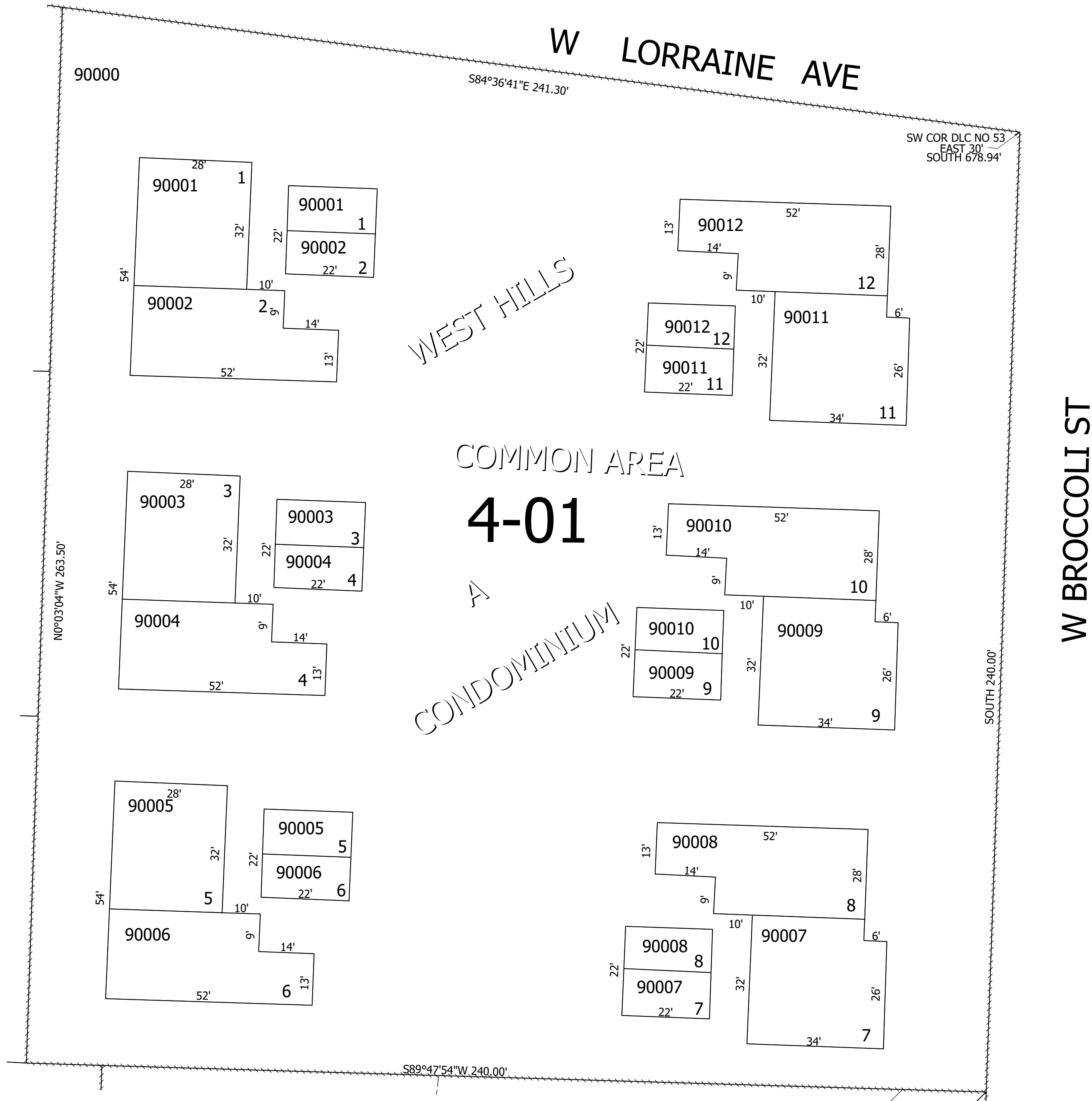
CANCELLED NOS:
2801 2901 2001
6999 4801 6701
2000 6201 7601
1800 1801 1601



SEE MAP
2706W23BD

270623BC
Roseburg

Lower Right:
123°22'53"W 43°12'23"N
4153209E 574330N ft



SEE MAP
2706W23BC