

THIS MAP WAS PREPARED FOR ASSESSMENT PURPOSE ONLY.

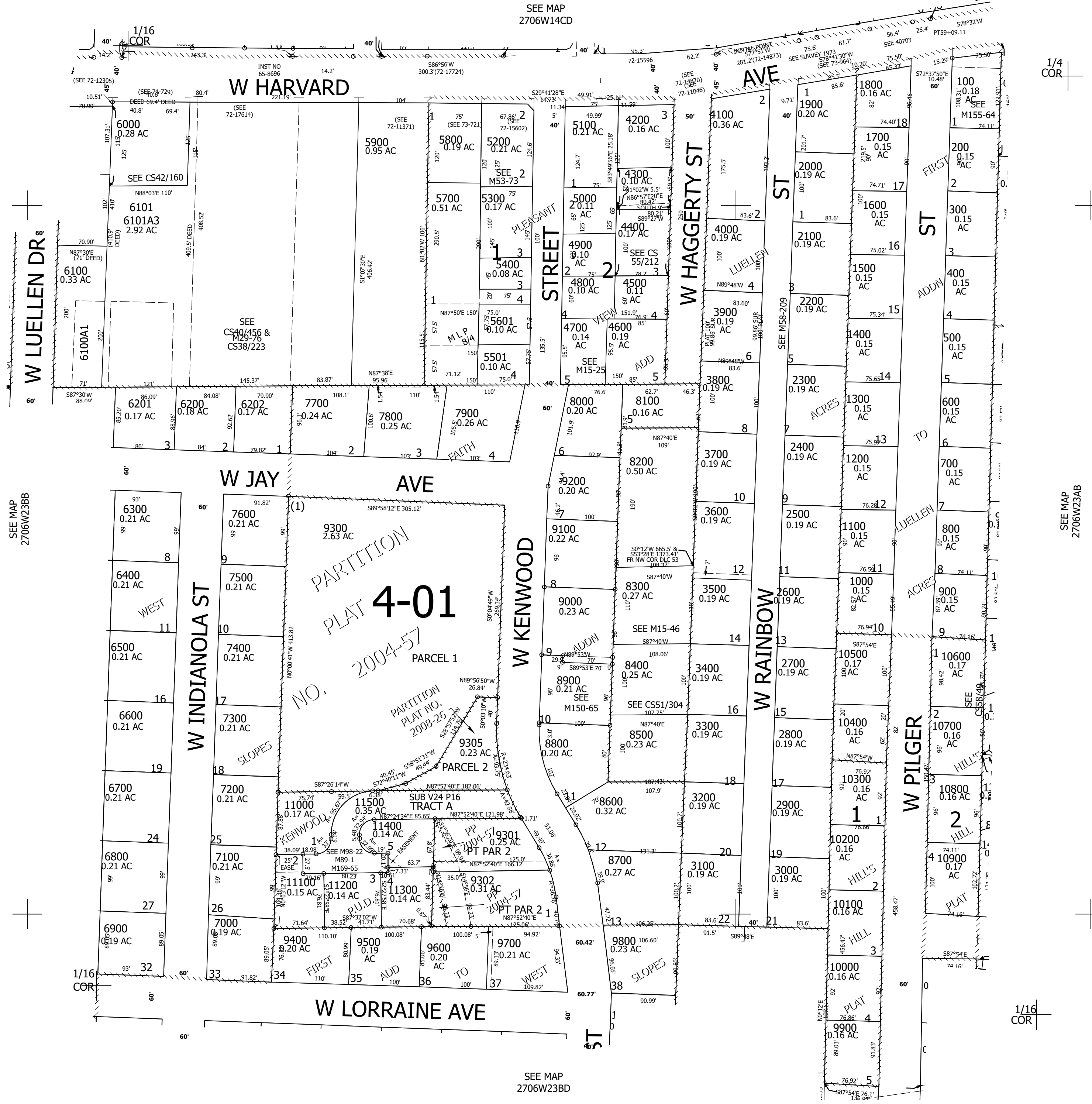
Upper Left:
123°23'21"W 43°12'53"N
4152697E 577385N ft

NE1/4 NW1/4 SEC.23 T.27S. R.06W. W.M.
DOUGLAS COUNTY
1" = 100'

Date Exported: 11/30/2022 3:53 PM

2706W23BA
& Roseburg

CANCELLED NOS:
5500 5600 9300A1
4401 8901 9303
9306 9307 9308
9309 9310 9312
6100A2 6101A1
6101A2 9304 9311
9313 9314



SEE MAP
2706W23BB

SEE MAP
2706W23AB

SEE MAP
2706W14CD

SEE MAP
2706W23BD

2706W23BA
& Roseburg

Lower Right:
123°22'34"W 43°12'36"N
4154659E 575646N ft