

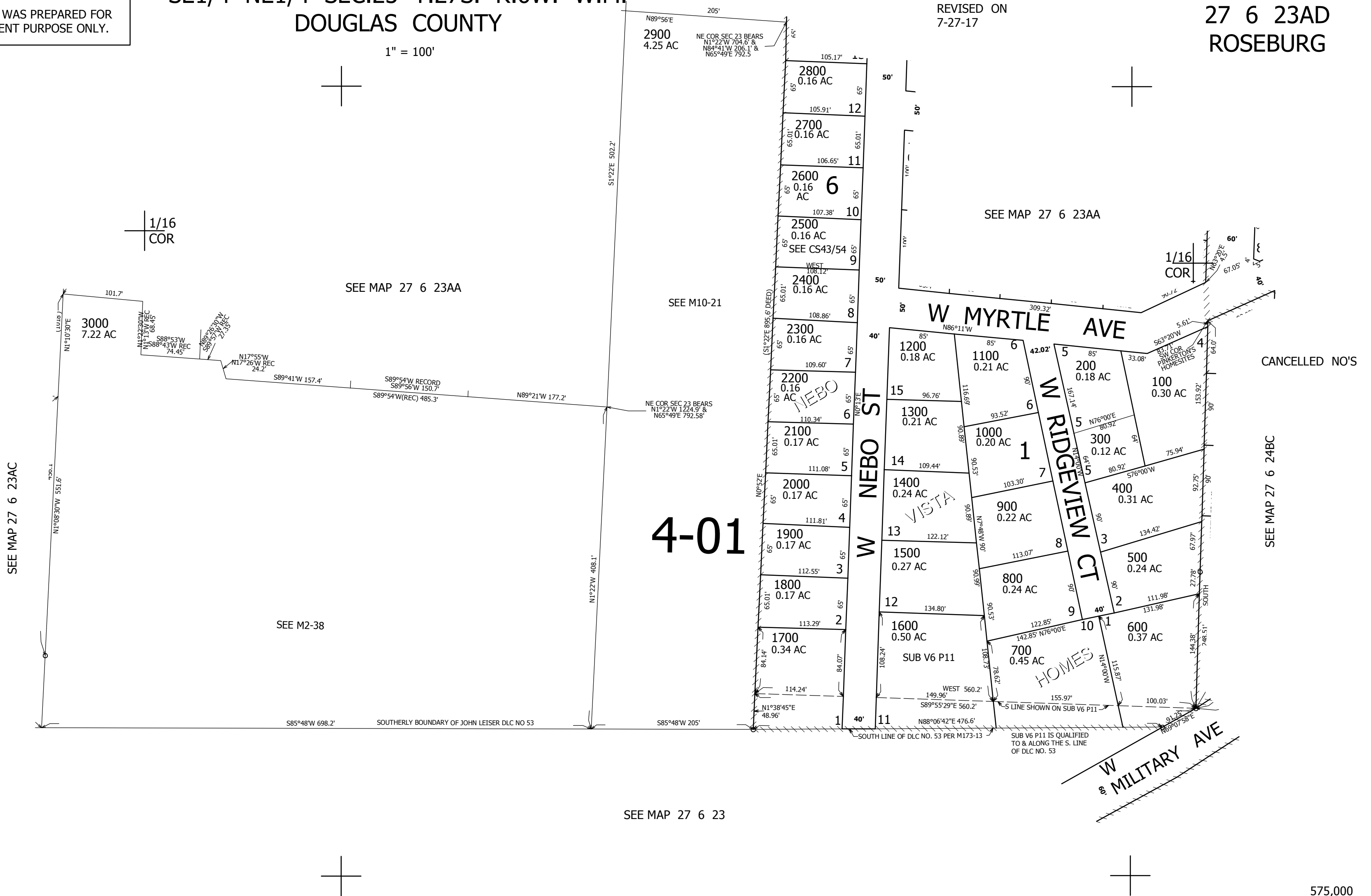
THIS MAP WAS PREPARED FOR ASSESSMENT PURPOSE ONLY.

SE1/4 NE1/4 SEC.23 T.27S. R.6W. W.M.
DOUGLAS COUNTY

1" = 100'

REVISED ON
7-27-17

27 6 23AD
ROSEBURG



CANCELLED NO'S

SEE MAP 27 6 24BC

SEE MAP 27 6 23

575,000

1/16
COR

4,157,000
1/4
COR

27 6 23AD
ROSEBURG