

THIS MAP WAS PREPARED FOR ASSESSMENT PURPOSE ONLY.

27 6 23AC
ROSEBURG

REVISED ON
9-13-16

CANCELLED NO'S
301 1301

SEE MAP 27 6 23AA

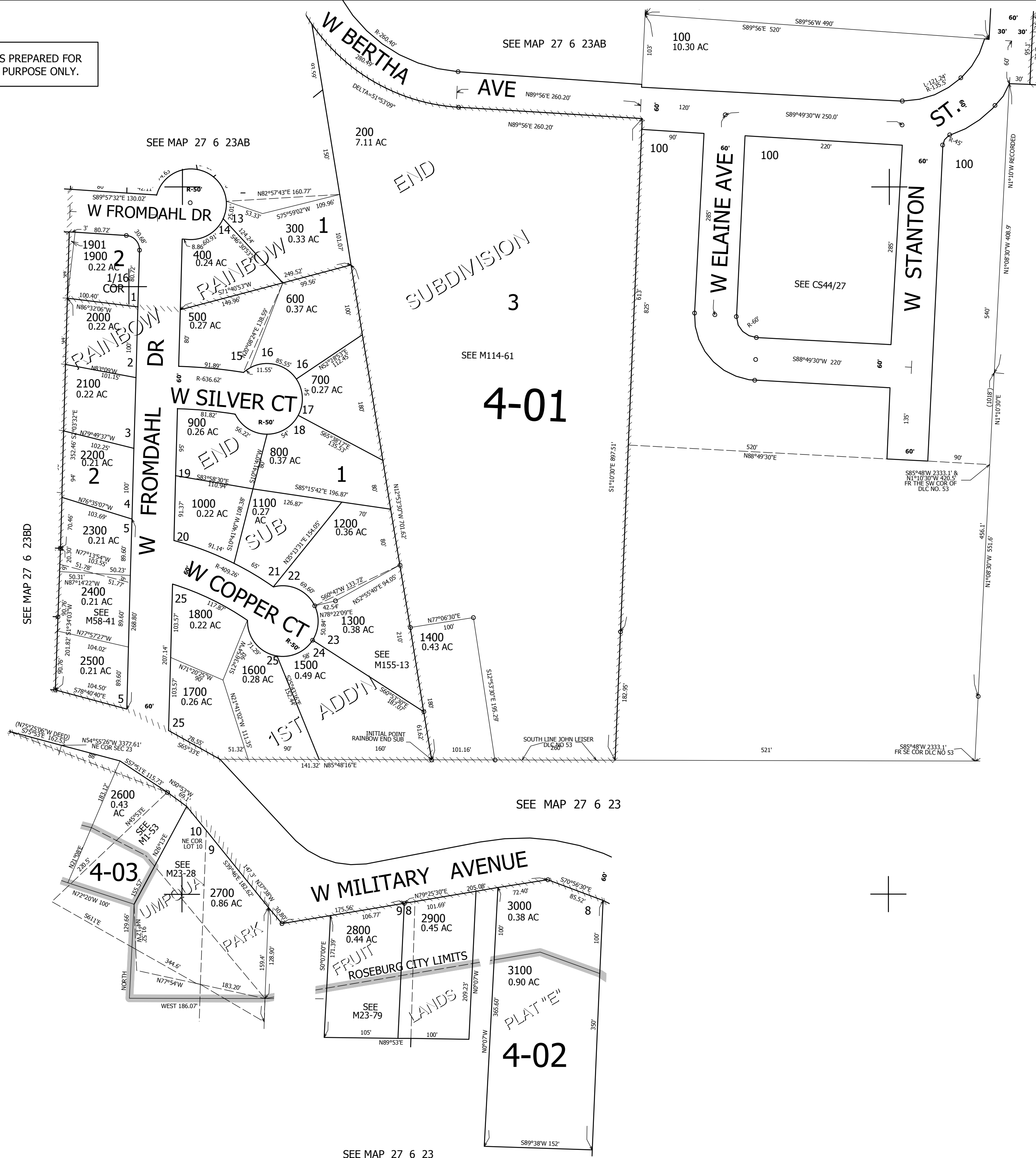
1/16
COR

SEE MAP 27 6 23AD

SW1/4 NE1/4 SEC.23 T.27S. R.6W. W.M.
DOUGLAS COUNTY

1" = 100'

575,000



SEE MAP 27 6 23BD

SEE MAP 27 6 23AB

SEE MAP 27 6 23AB

SEE M114-61

4-01

SEE MAP 27 6 23

SEE MAP 27 6 23

4,155,500

1/4
COR

1/16
COR

27 6 23AC
ROSEBURG