

THIS MAP WAS PREPARED FOR ASSESSMENT PURPOSE ONLY.

Upper Left:
123°22'43"W 43°12'54"N
4154061E 577492N ft

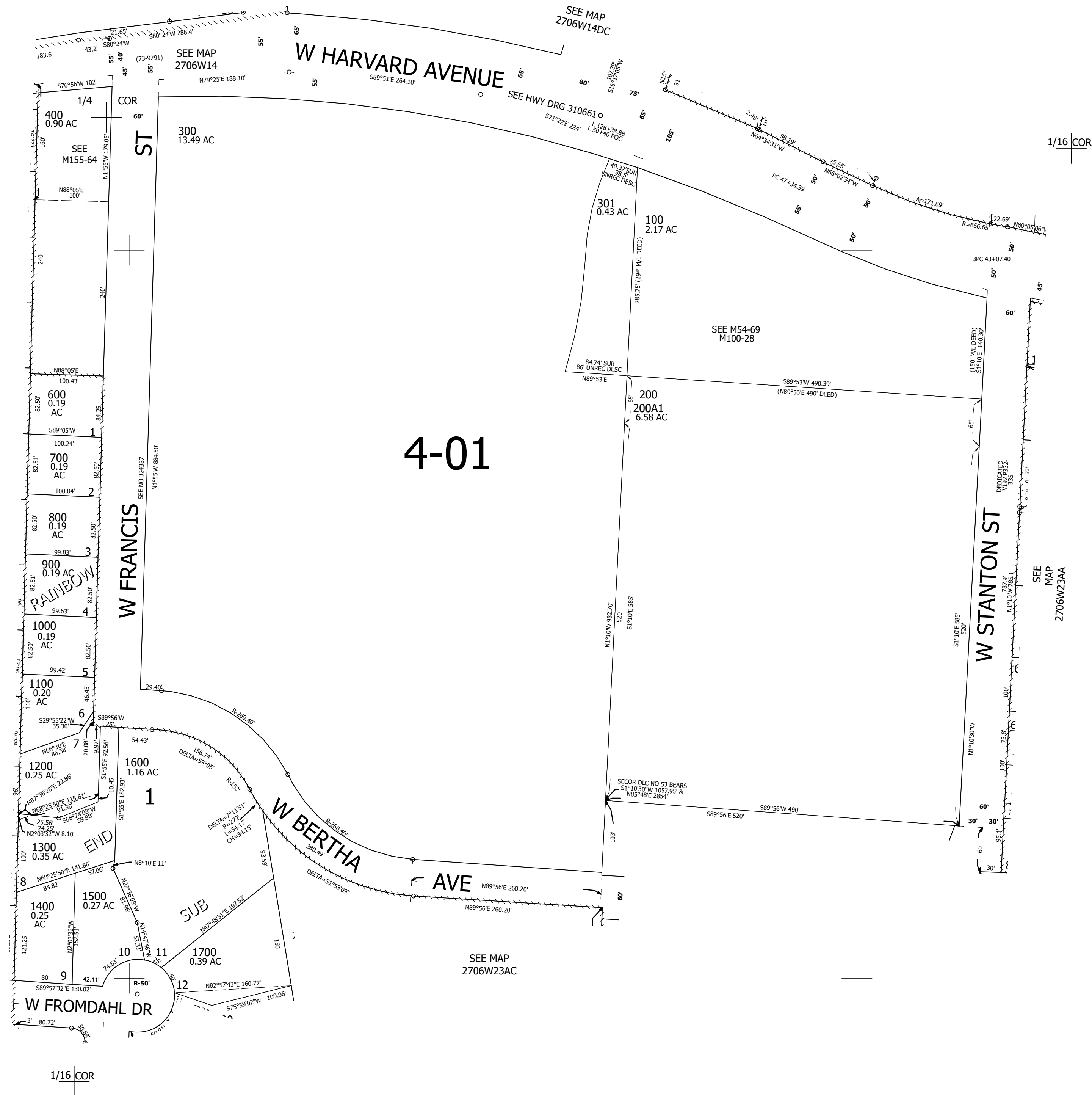
NW1/4 NE1/4 SEC.23 T.27S. R.06W. W.M.
DOUGLAS COUNTY
1" = 100'

Date Exported 2025-11-10

270623AB
Roseburg

CANCELLED NOS:
200A2 100A1 500

SEE MAP
2706W23BA



1/16 COR

SEE MAP
2706W23AA

1/16 COR

1/16 COR

270623AB
Roseburg

Lower Right:
123°22'16"W 43°12'38"N
4156033E 575753N ft