

THIS MAP WAS PREPARED FOR ASSESSMENT PURPOSE ONLY.

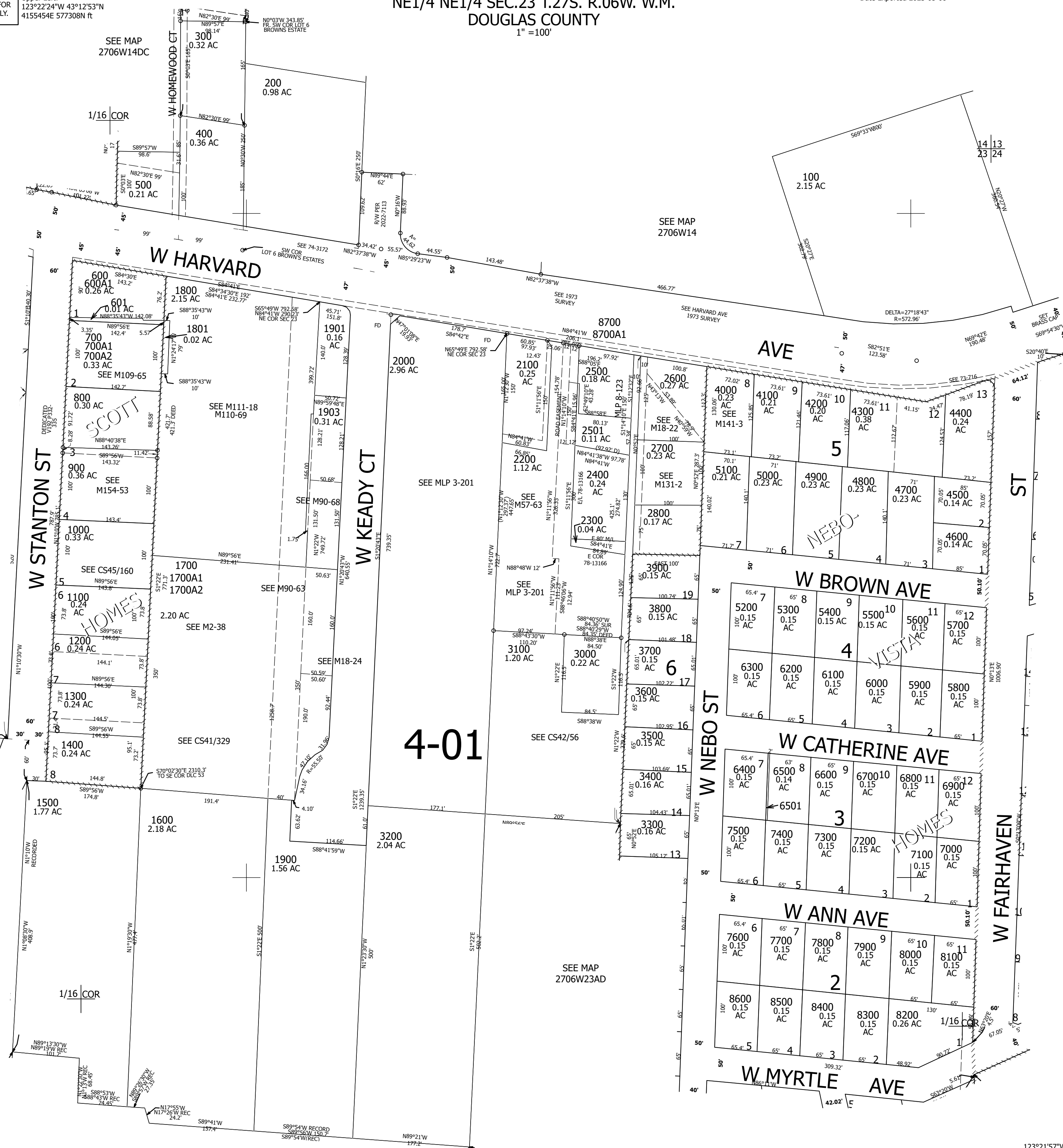
Upper Left:  
123°22'24"W 43°12'53"N  
4155454E 577308N ft

NE1/4 NE1/4 SEC.23 T.27S. R.06W. W.M.  
DOUGLAS COUNTY  
1" = 100'

Date Exported 2023-05-08

270623AA  
& Roseburg

CANCELLED NOS:  
1902 2201 2601  
200A1 1802 100M1  
801 2900



SEE MAP  
2706W14DC

SEE MAP  
2706W14

SEE MAP  
2706W24BB

SEE MAP  
2706W23AB

SEE MAP  
2706W23AC

270623AA  
& Roseburg

Lower Right:  
123°21'57"W 43°12'36"N  
4157416E 575569N ft