

THIS MAP WAS PREPARED FOR ASSESSMENT PURPOSE ONLY.

NE1/4 SW1/4 SEC.22 T.27S. R.6W. W.M.
DOUGLAS COUNTY
1" = 100'

REVISED ON
9-13-16

27 6 22CA
ROSEBURG

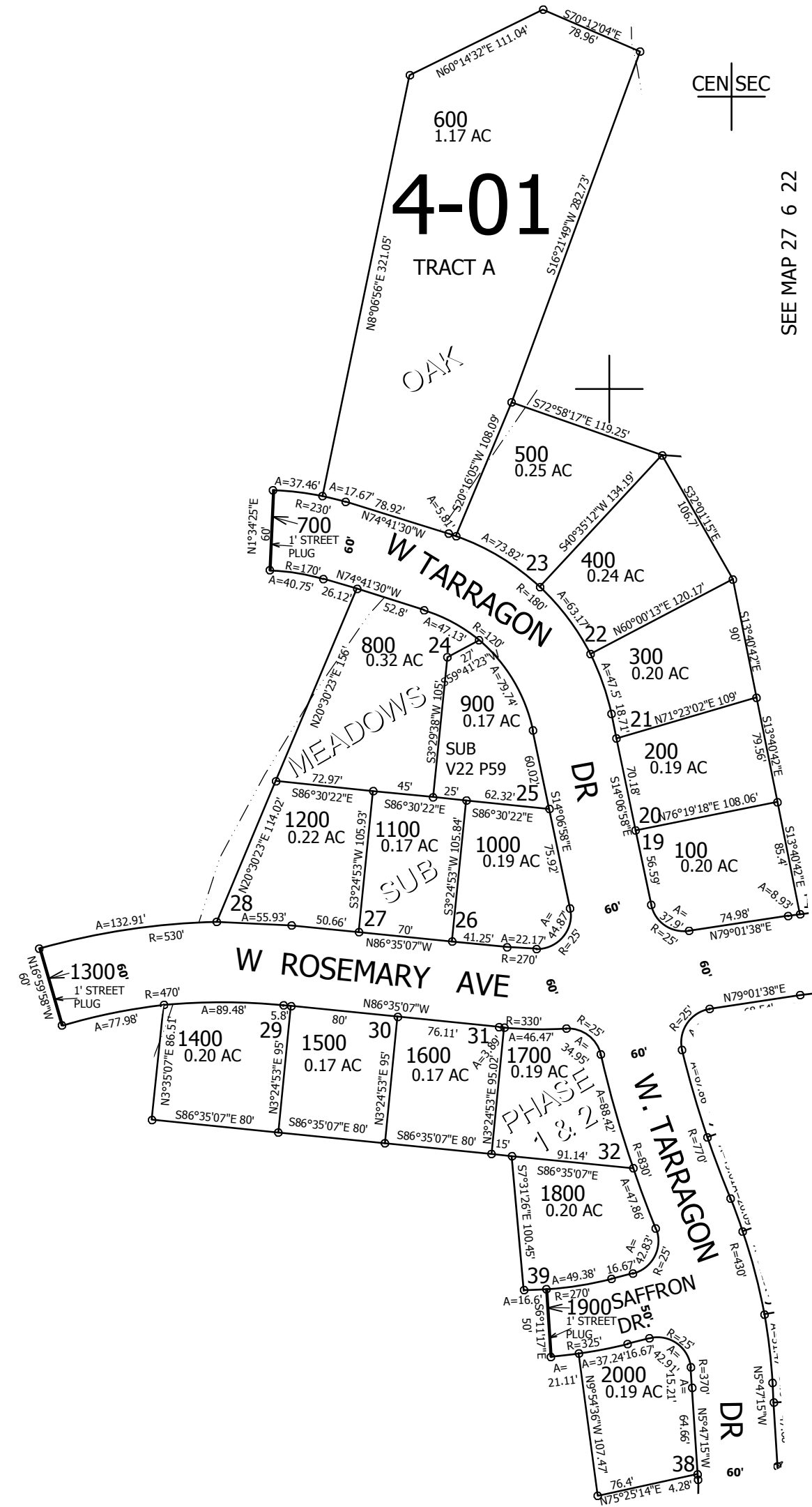
SEE MAP 27 6 22

1/16 COR

CEN SEC

CANCELLED NO'S

SEE MAP 27 6 22



SEE MAP 27 6 22

SEE MAP 27 6 22DB

SEE MAP 27 6 22

1/16 COR

1/16 COR

573,500

4,149,000

27 6 22CA
ROSEBURG