

THIS MAP WAS PREPARED FOR ASSESSMENT PURPOSE ONLY.

Upper Left:  
123°24'43"W 43°12'56"N  
4145250E 578010N ft

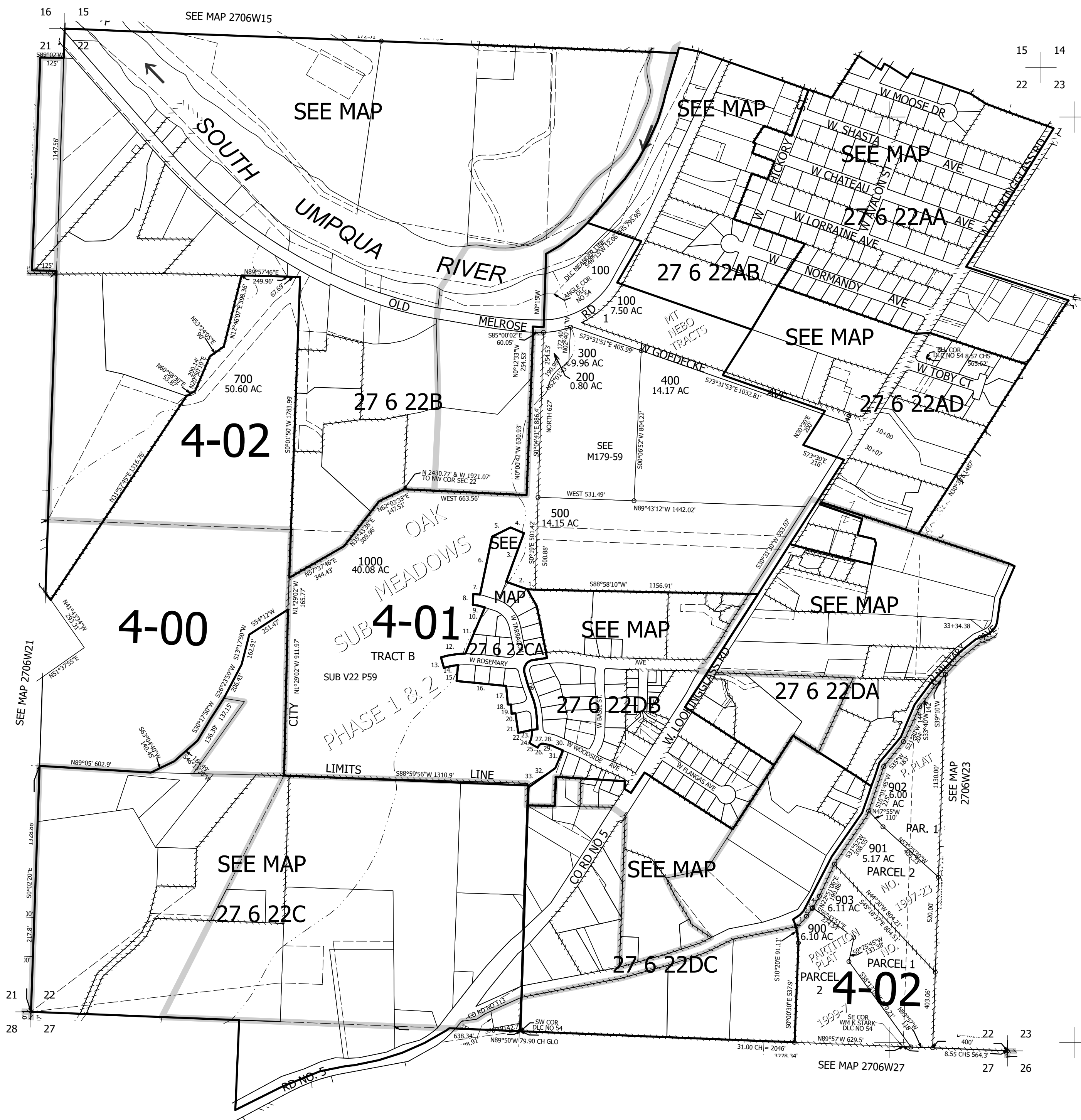
SEC.22 T.27S. R.06W. W.M.  
DOUGLAS COUNTY  
1" = 400'

Date Exported 2025-02-18

CANCELLED NOS:  
800 600 601  
602

- TAXLOT 1000
1. S88°19'04"E 39.69'
  2. N72°58'17"E 119.25'
  3. N16°21'49"E 282.73'
  4. N70°12'04"W 78.96'
  5. S60°14'32"W 111.04'
  6. S8°06'56"W 321.05'
  7. A=37.46' R=230'
  8. S1°34'25"W 60'
  9. A=40.75' R=170'
  10. S74°41'30"E 26.12'
  11. S20°30'23"W 270.02'
  12. A=132.91' R=530'
  13. S16°59'58"E 60'
  14. A=77.98' R=470'
  15. S3°35'07"W 86.51'
  16. S86°35'07"W 255'
  17. S7°31'26"E 100.45'
  18. A=16.6 R=275'
  19. S6°11'17"E 50'
  20. A=21.11' R=325'
  21. S9°54'36"E 107.47'
  22. N75°23'14"E 76.4'
  23. S5°47'15"E 4.28'
  24. A=68.48' R=120'
  25. S63°05'27"E 52.22'
  26. A=9.03' R=175.09'
  27. A=32.22' R=25'
  28. S80°47'15"E 32.22'
  29. A=24.33' R=120'
  30. S69°10'22"E 55.26'
  31. S20°49'38"W 105'
  32. S56°07'36"W 177.12'
  33. N0°18'02"W 11.11'

- PP 1999-7
1. LC=N44°47'40"E 77.62'
  - R=193.66' A=78.15'
  2. N33°14'02"E 51.79'
  3. LC=N32°56'15"E 4.41'
  - R=426.55' A=4.41'
  4. LC=N27°44'48"E 72.79'
  - R=426.55' A=72.88'



Lower Right:  
123°22'53"W 43°11'50"N  
4153100E 571055N ft