

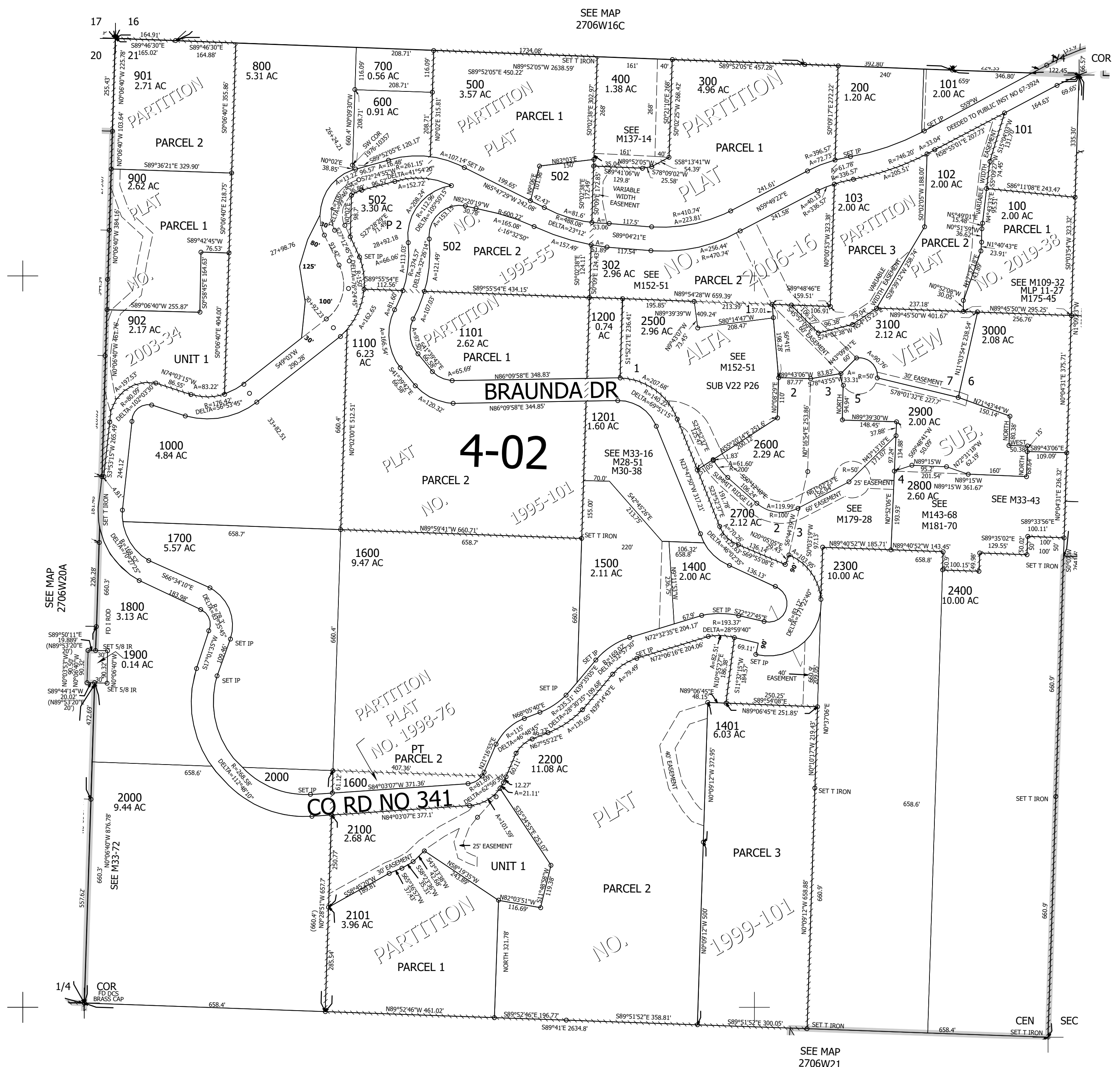
THIS MAP WAS PREPARED FOR ASSESSMENT PURPOSE ONLY.

Upper Left:
123°25'46"W 43°12'55"N
4140548E 578033N ft

NW1/4 SEC.21 T.27S. R.06W. W.M.
DOUGLAS COUNTY
1" = 200'

Date Exported 2025-01-21

CANCELLED NOS:
1402 1202 1301
1403 2401 1404
501 1501 1405
1601 2102 2103
2104 2105 2106
2201 301 1203
1300 1204 1205
2501 3101 2601
2701



SEE MAP
2706W20A

SEE MAP
2706W16C

SEE MAP
2706W21

270621B
& INDEX

Lower Right:
123°24'51"W 43°12'22"N
4144472E 574556N ft