

THIS MAP WAS PREPARED FOR ASSESSMENT PURPOSE ONLY.

Upper Left:  
123°25'54"W 43°12'59"N  
4139972E 578447N ft

SEC.21 T.27S. R.06W. W.M.  
DOUGLAS COUNTY  
1" = 400'

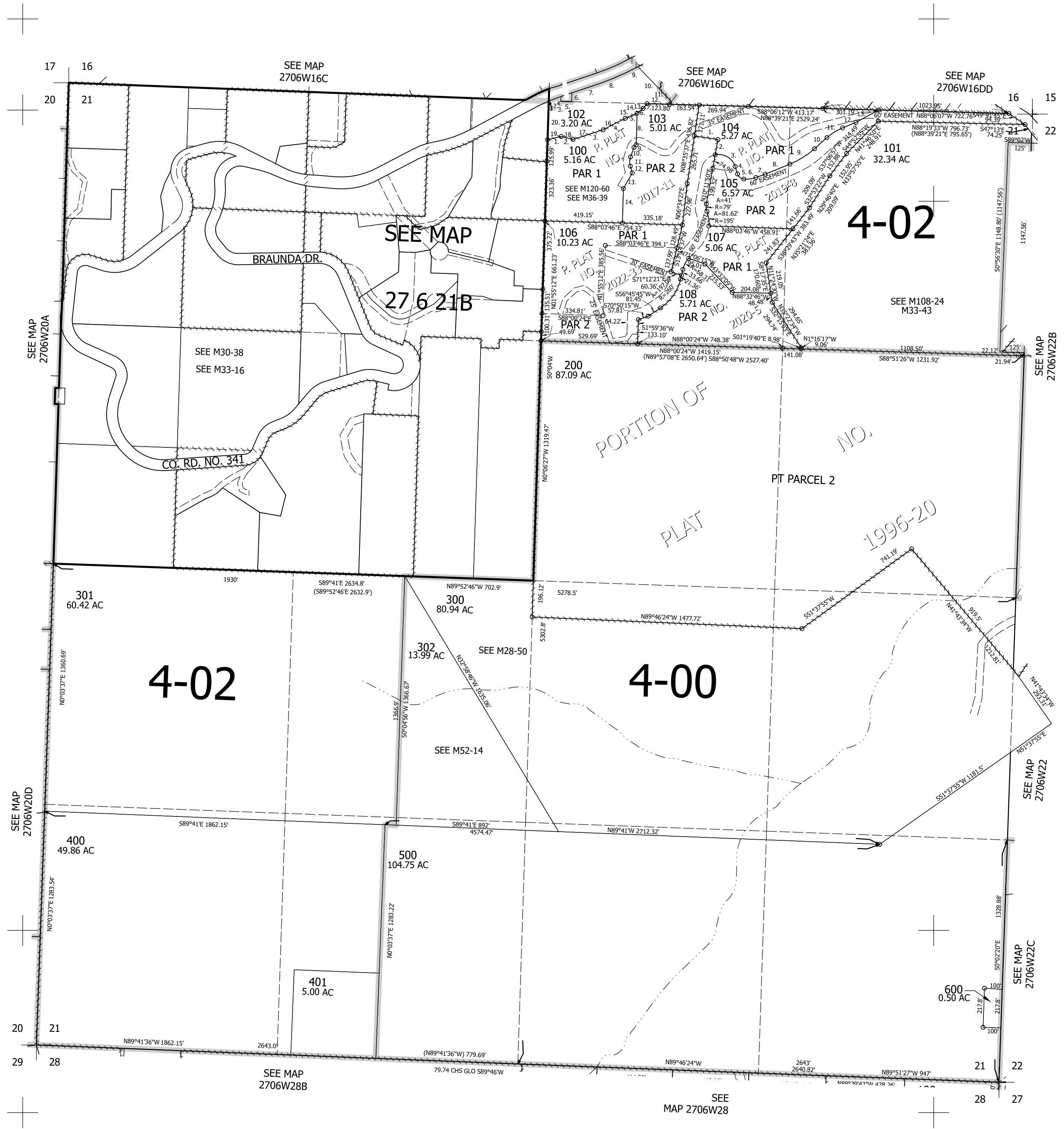
Date Exported 2026-04-14

CANCELLED NOS:  
109

- PARCEL 100  
PP 2017-11
1. N76°55'09"E 73.42'
  2. S75°35'59"E 66.36'
  3. N72°43'38"E 173.97'
  4. N62°45'06"E 137.29'
  5. N67°14'54"E 69.59'
  6. N51°18'53"E 43.00'
  7. N39°35'05"E 32.84'
  8. S1°58'26"E 173.08'
  9. A=19.84' R=27.5'
  - LC=S40°48'12"W 19.42'
  10. S20°07'54"W 55.56'
  11. A=52.35' R=82.5'
  - LC=S1°57'14"W 51.47'
  12. S16°13'25"E 38.79'
  13. S30°09'23"W 98.66'
  14. S1°56'14"W 190.67'

- PARCEL 102  
PER M120-60
1. LC=N64°48'41"E 4.27'
  2. LC=N66°57'25"E 64.02'
  3. N69°15'20"E 7.6'
  4. S0°01'04"W 25.95'
  5. S89°58'56"E 59.99'
  6. N0°01'04"E 48.69'
  7. N69°15'20"E 164.65'
  8. LC=N64°39'33"E 205'
  9. N59°59'08"E 13.05'
  10. S45°30'E 268.89'
  11. S33°54'35"W 16.62'
  12. N89°58'56"W 123.8'
  13. S39°50'28"W 32.95'
  14. S49°55'46"W 43.06'
  15. S65°48'02"W 69.63'
  16. S61°03'09"W 137.34'
  17. S71°03'29"W 173.26'
  18. N78°24'57"W 66.17'
  19. S75°09'26"W 73.6'
  20. N0°06'21"E 209.63'

- PARCEL 104  
PP 2019-8
1. S81°24'23"E 130.40'
  2. S10°11'50"W 85.08'
  3. A=139.19' R=95'
  - LC=S59°26'47"W 127.07'
  4. S17°28'18"E 42.74'
  5. A=47.32' R=40.00'
  - LC=S51°21'48"E 44.61'
  6. A=67.43' R=160.00'
  - LC=N82°40'18"E 66.93'
  7. N70°35'53"E 53.65'
  8. N67°46'23"E 146.62'
  9. A=160.15' R=470.00'
  - LC=N58°00'42"E 159.37'
  10. N48°15'01"E 91.27'
  11. A=101.96' R=300.00'
  - LC=N57°59'12"E 101.47'
  12. N67°43'24"E 79.06'
  13. N61°50'26"E 138.58'



4-02

4-00

4-02

27 6 21 B

Lower Right:  
123°24'5"W 43°11'53"N  
4147822E 571491N ft