

THIS MAP WAS PREPARED FOR ASSESSMENT PURPOSE ONLY.

Upper Left:
123°26'54"W 43°12'55"N
4135490E 578198N ft

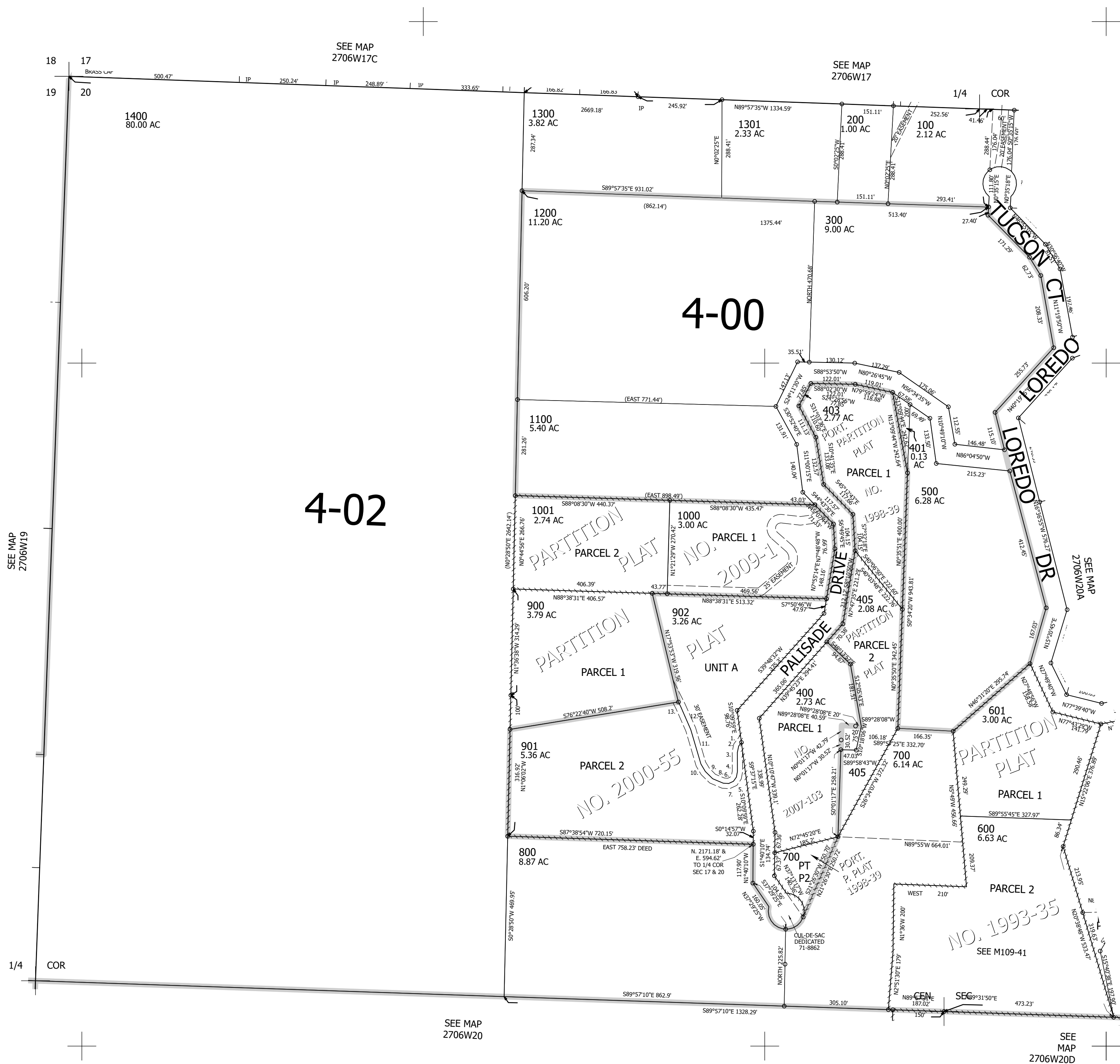
NW1/4 SEC.20 T.27S. R.06W. W.M.
DOUGLAS COUNTY
1" = 200'

Date Exported 2025-02-03

270620B

CANCELLED NOS:
701 1400A1 402
702 404

- PP 2000-55
- 1. S36°17'50"W 13.49'
- 2. S11°05'53"W 18.9'
- 3. S0°38'54"E 55.99'
- 4. S10°07'03"W 16.57'
- 5. S34°42'56"W 15.08'
- 6. S64°52'19"W 15.22'
- 7. N87°09'W 16.11'
- 8. N67°28'22"W 33.58'
- 9. N45°53'30"W 30.35'
- 10. N31°20'15"W 25.15'
- 11. N16°48'51"W 105.24'
- 12. N24°11'03"W 73.98'
- 13. N27°08'38"W 14.43'



SEE MAP
2706W17C

SEE MAP
2706W17

SEE MAP
2706W19

SEE MAP
2706W20A

SEE MAP
2706W20

SEE MAP
2706W20D

270620B

Lower Right:
123°26'W 43°12'22"N
4139415E 574720N ft