

THIS MAP WAS PREPARED FOR ASSESSMENT PURPOSE ONLY.

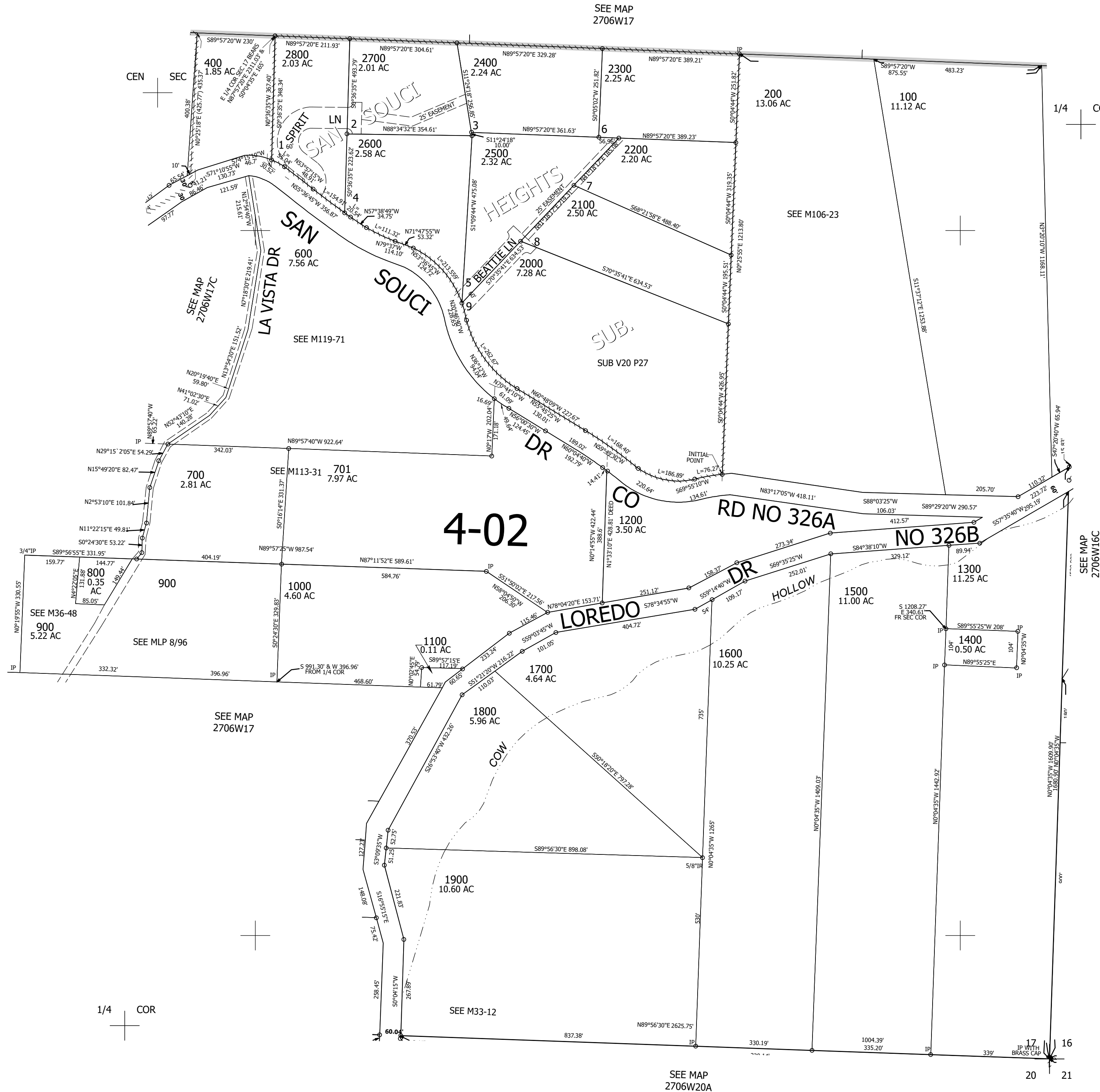
Upper Left:
123°26'24"W 43°13'22"N
4137846E 580843N ft

SE1/4 SEC.17 T.27S. R.06W. W.M.
DOUGLAS COUNTY
1" = 200'

Date Exported 2025-02-19

270617D

CANCELLED NOS:
300 500



4-02

1/4 COR

20 21

SEE MAP 2706W20A

Lower Right:
123°25'29"W 43°12'49"N
4141771E 577365N ft

270617D