

THIS MAP WAS PREPARED FOR ASSESSMENT PURPOSE ONLY.

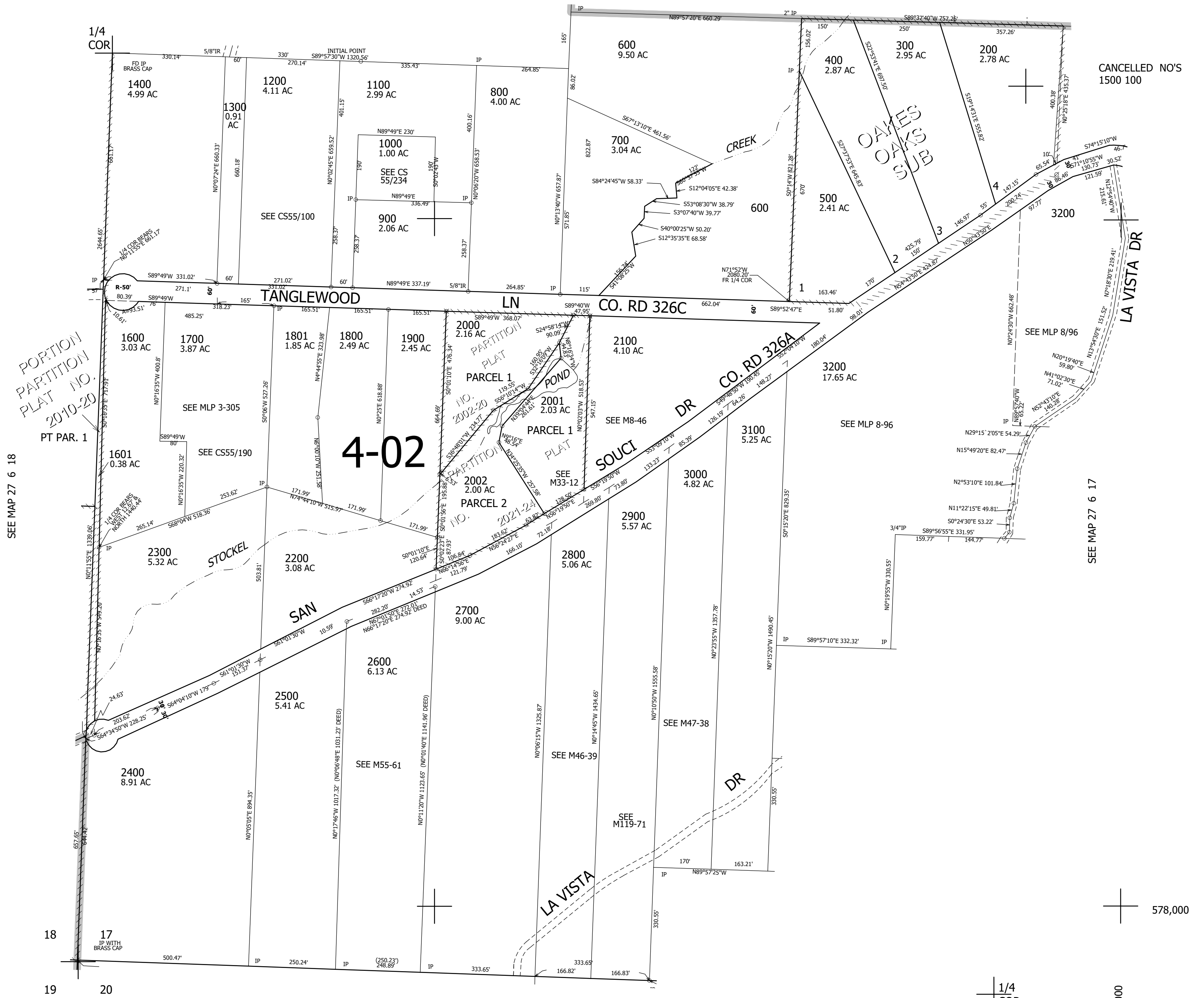
SW1/4 SEC.17 T.27S. R.6W. W.M. DOUGLAS COUNTY

REVISED ON 6-21-21

27 6 17C

1" = 200'

SEE MAP 27 6 17



SEE MAP 27 6 18

SEE MAP 27 6 17

SEE MAP 27 6 20B

578,000

4,139,000

27 6 17C