

THIS MAP WAS PREPARED FOR ASSESSMENT PURPOSE ONLY.

SE1/4 SE1/4 SEC.16 T.27S. R.6W. W.M.
DOUGLAS COUNTY

1" = 100'

REVISED ON
10-2-14

27 6 16DD

1/16
COR

1/16
COR

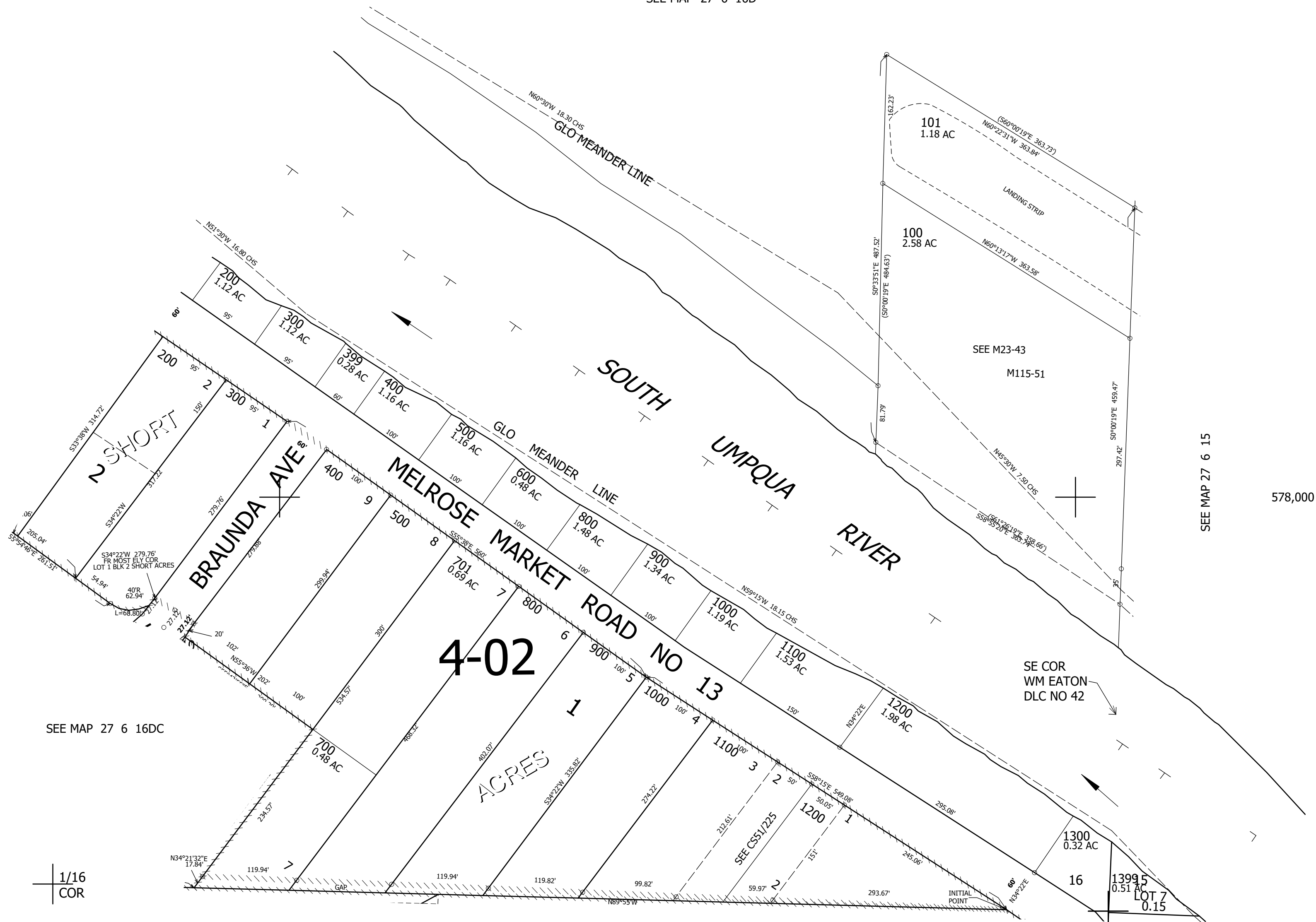
CANCELLED NO'S

SEE MAP 27 6 16D

SEE MAP 27 6 16D

SEE MAP 27 6 15

578,000



SEE MAP 27 6 16DC

1/16
COR

SEE MAP 27 6 21

21
22
4,146,500

27 6 16DD