

THIS MAP WAS PREPARED FOR ASSESSMENT PURPOSE ONLY.

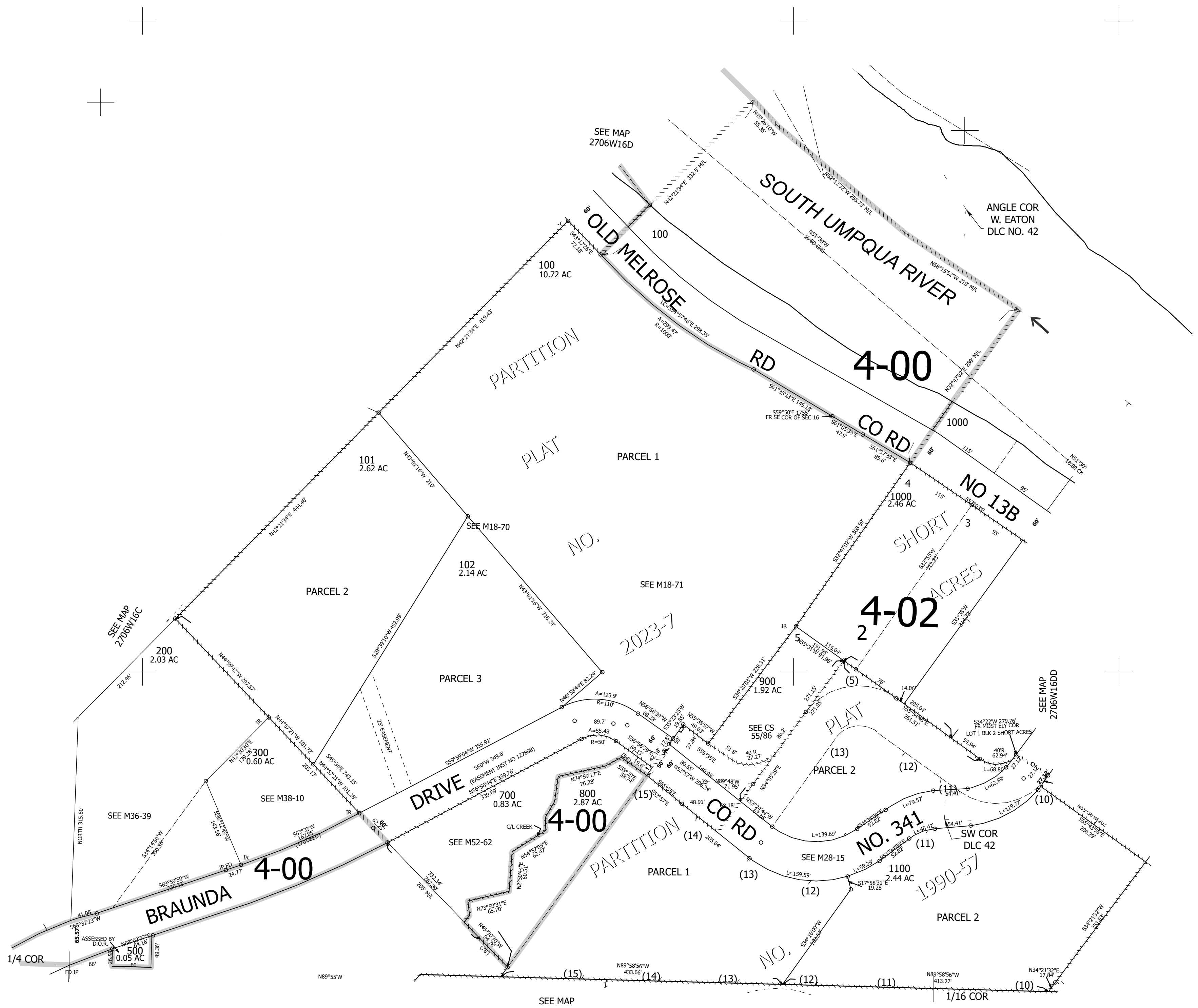
Upper Left:
123°25'4"W 43°13'6"N
4143726E 579091N ft

SW1/4 SE1/4 SEC.16 T.27S. R.06W. W.M.
DOUGLAS COUNTY
1" = 100'

Date Exported: 4/4/2023 3:46 PM

2706W16DC
&

CANCELLED NOS:
1200 400 600 1101



1/4 COR
ASSESSED BY D.O.R.
500
0.05 AC

SEE MAP
2706W21

SEE MAP
2706W16DD

Lower Right:
123°24'36"W 43°12'50"N
4145688E 577352N ft

2706W16DC
&