

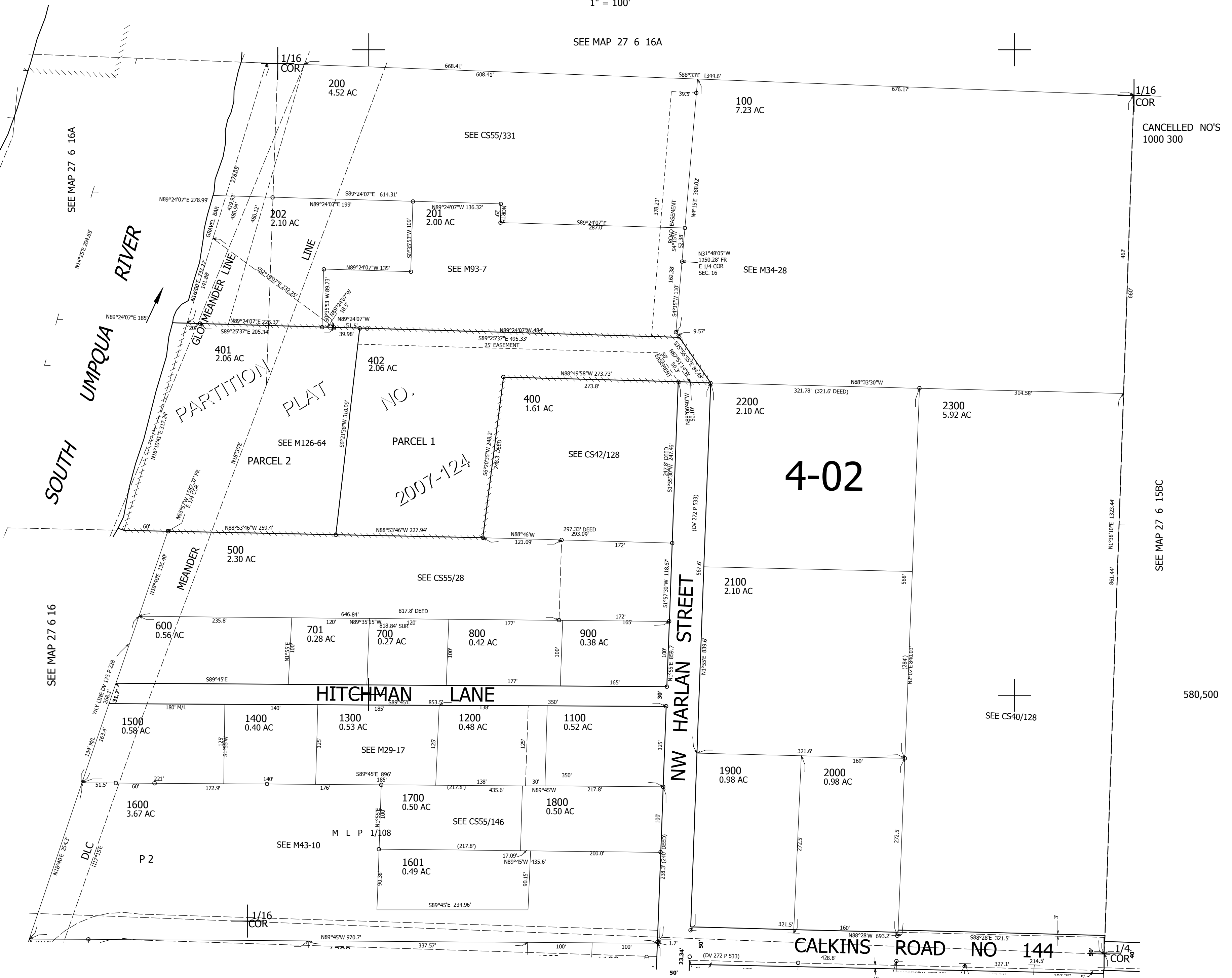
THIS MAP WAS PREPARED FOR ASSESSMENT PURPOSE ONLY.

SE1/4 NE1/4 SEC.16 T.27S. R.6W. W.M.
DOUGLAS COUNTY
1" = 100'

REVISED ON
11-15-07

27 6 16AD

SEE MAP 27 6 16A



CANCELLED NO'S
1000 300

SEE MAP 27 6 15BC

580,500

SEE MAP 27 6 16DA

4,146,500

27 6 16AD