

THIS MAP WAS PREPARED FOR ASSESSMENT PURPOSE ONLY.

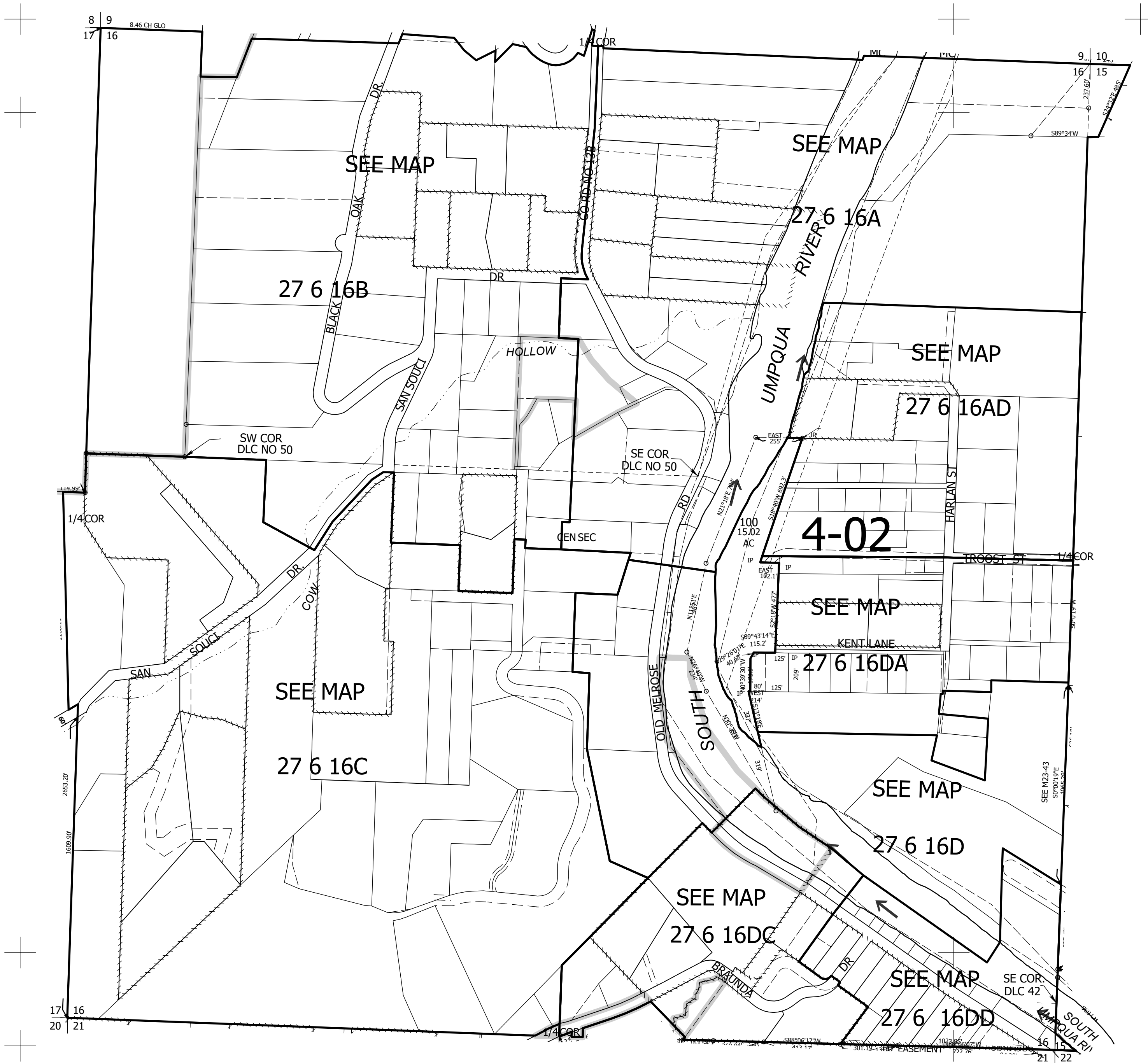
Upper Left:
123°25'53"W 43°13'51"N
4140200E 583761N ft

SEC.16 T.27S. R.06W. W.M.
DOUGLAS COUNTY
1" = 400'

Date Exported: 4/6/2023 3:54 PM

270616 &

CANCELLED NOS:
101



270616 &

Lower Right:
123°24'5"W 43°12'45"N
4147953E 576739N ft