

THIS MAP WAS PREPARED FOR ASSESSMENT PURPOSE ONLY.

SW1/4 SE1/4 SEC.15 T.27S. R.6W. W.M. DOUGLAS COUNTY

1" = 100'

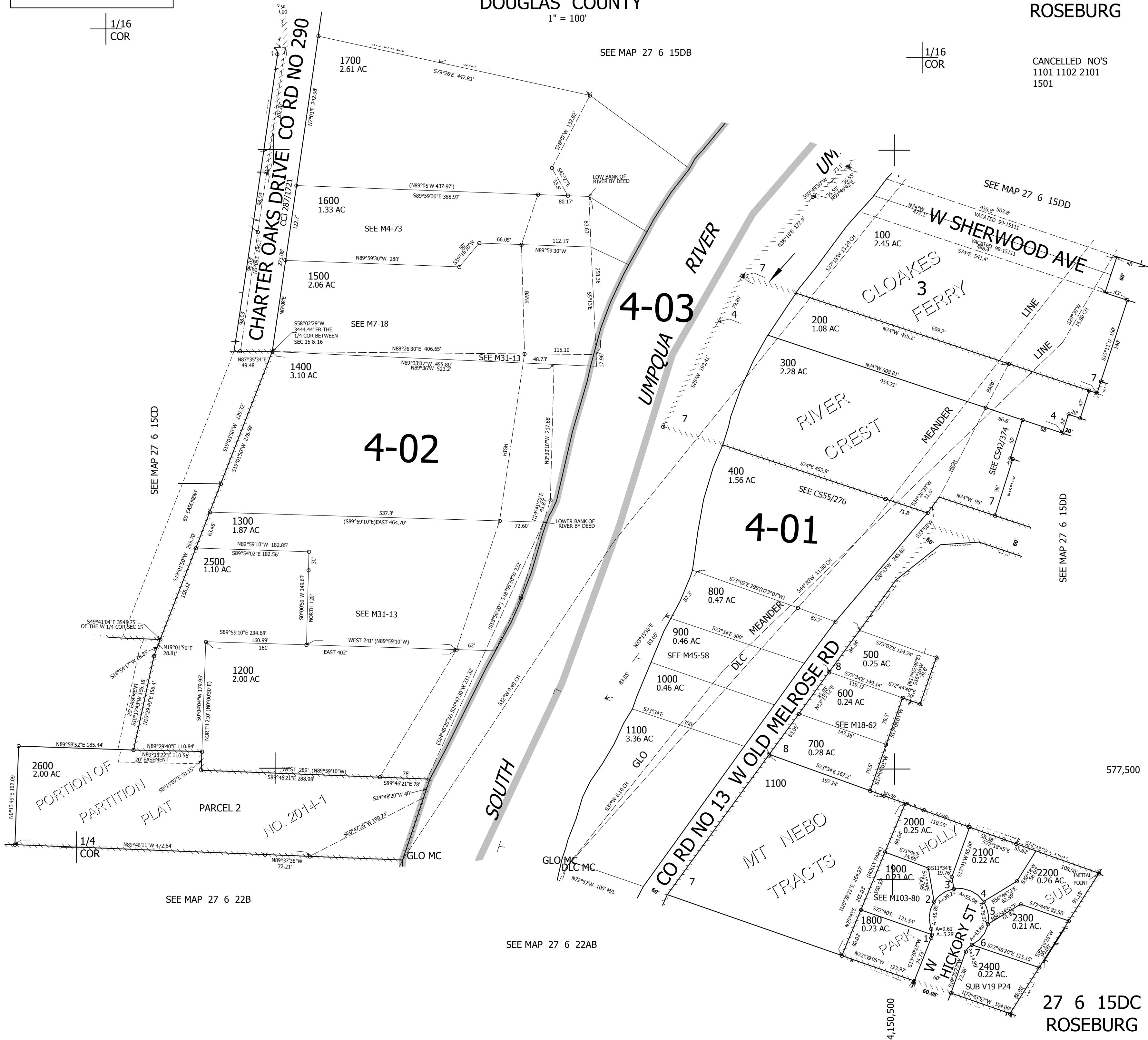
REVISED ON 10-4-16

27 6 15DC ROSEBURG

1/16 COR

1/16 COR

CANCELLED NO'S 1101 1102 2101 1501



SEE MAP 27 6 15DD

SEE MAP 27 6 15CD

SEE MAP 27 6 22B

SEE MAP 27 6 22AB

577,500

4,150,500

27 6 15DC ROSEBURG