

THIS MAP WAS PREPARED FOR ASSESSMENT PURPOSE ONLY.

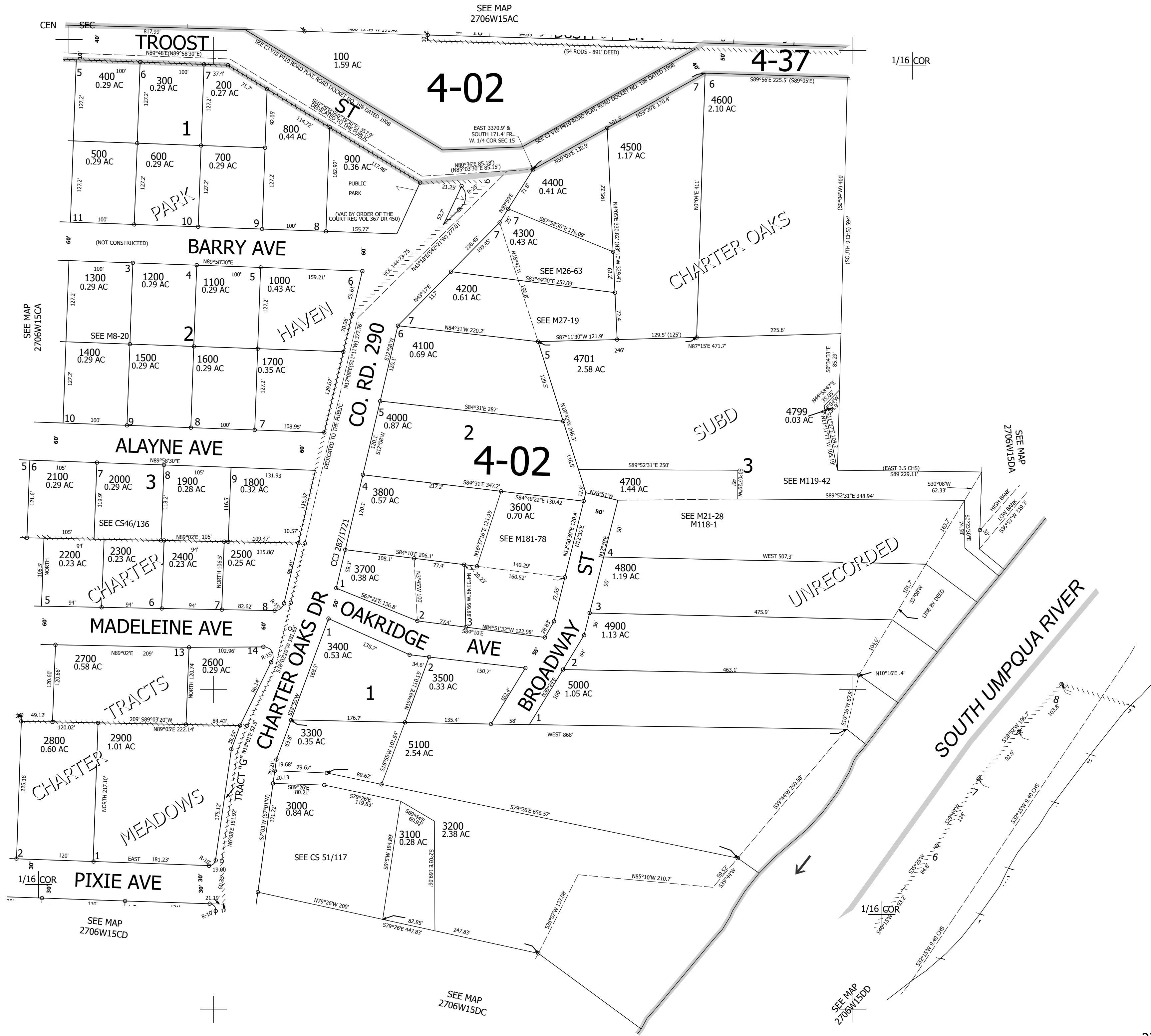
Upper Left:
123°23'52"W 43°13'18"N
4149094E 580120N ft

NW1/4 SE1/4 SEC.15 T.27S. R.06W. W.M.
DOUGLAS COUNTY
1" = 100'

Date Exported 2026-02-12

270615DB
Roseburg

CANCELLED NOS:
3900



270615DB
Roseburg

Lower Right:
123°23'24"W 43°13'2"N
4151066E 578381N ft