

THIS MAP WAS PREPARED FOR ASSESSMENT PURPOSE ONLY.

Upper Left:
123°24'4"W 43°13'7"N
4148160E 578937N ft

SE1/4 SW1/4 SEC.15 T.27S. R.06W. W.M.
DOUGLAS COUNTY
1" = 100'

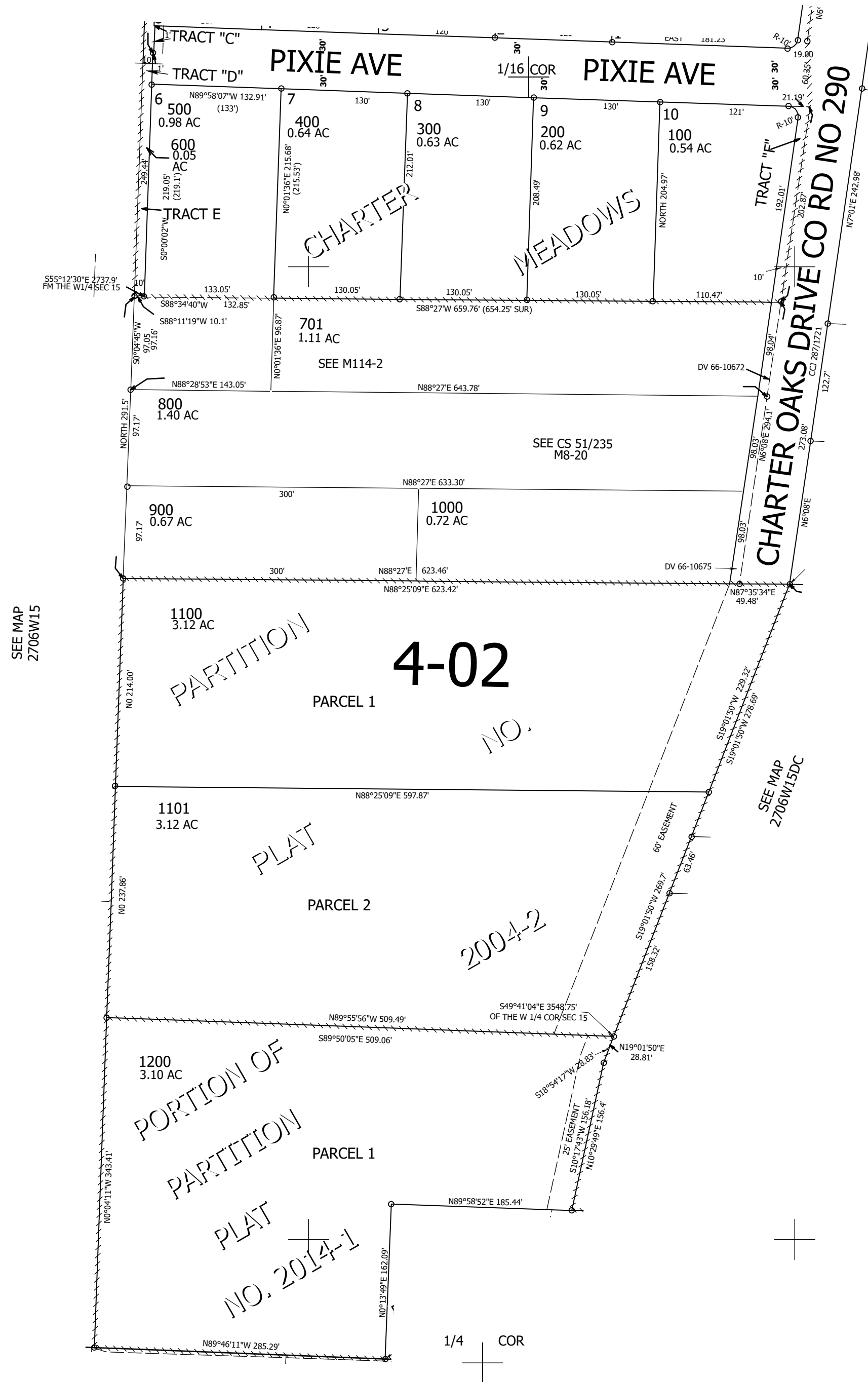
Date Exported 2025-08-28

270615CD

CANCELLED NOS:
1201 700

SEE MAP
2706W15CA

SEE MAP 2706W15DB



SEE MAP
2706W15

SEE MAP
2706W15DC

SEE MAP
2706W22B

270615CD

Lower Right:
123°23'36"W 43°12'50"N
4150135E 577198N ft