

THIS MAP WAS PREPARED FOR ASSESSMENT PURPOSE ONLY.

Upper Left:  
123°24'29"W 43°13'22"N  
4146335E 580618N ft

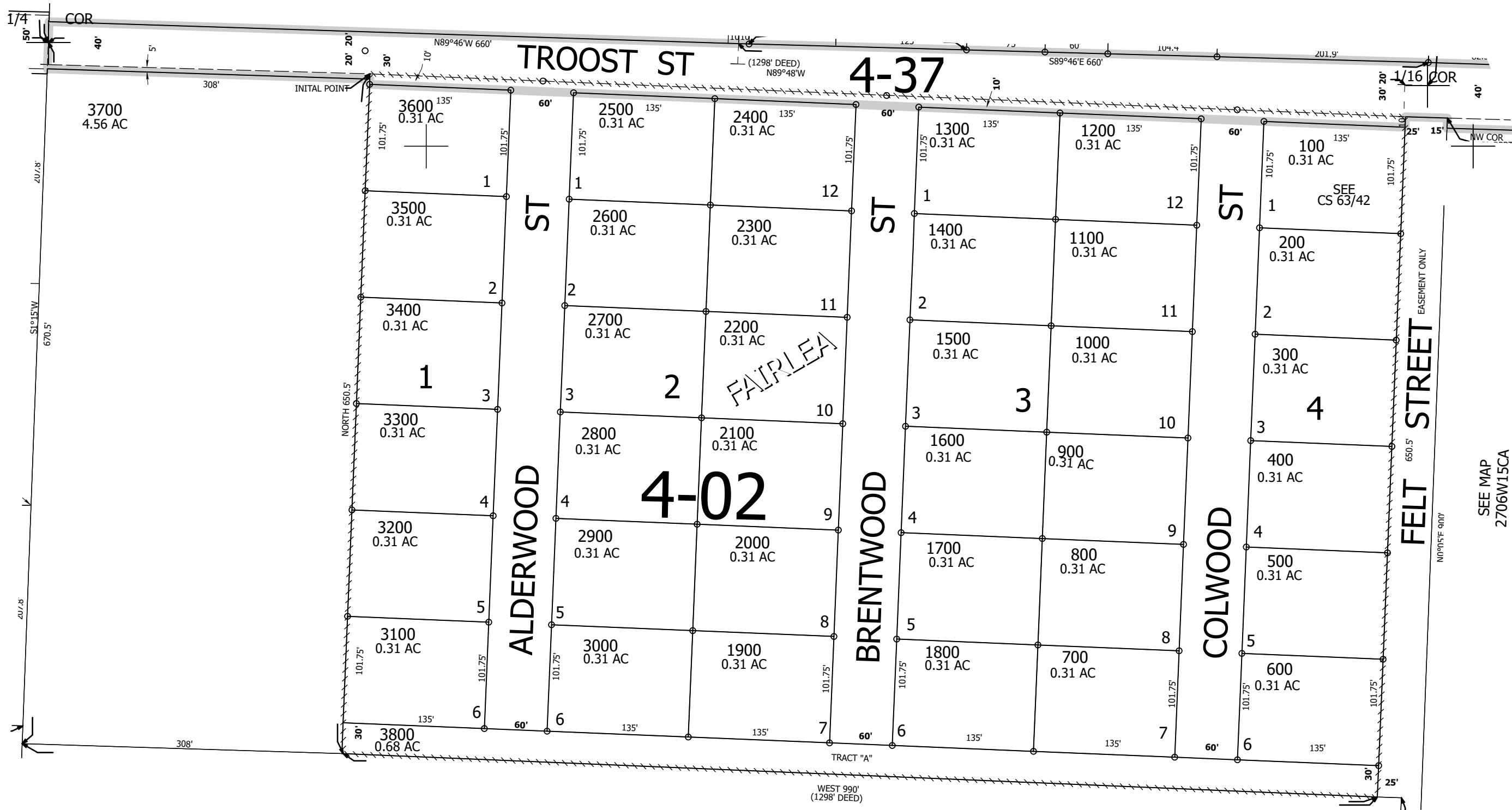
NW1/4 SW1/4 SEC.15 T.27S. R.06W. W.M.  
DOUGLAS COUNTY  
1" = 100'

Date Exported 2026-02-11

270615CB  
ROSEBURG

CANCELLED NOS:

SEE MAP  
2706W15BC



SEE MAP  
2706W15

270615CB  
ROSEBURG

Lower Right:  
123°24'2"W 43°13'6"N  
4148308E 578879N ft