

THIS MAP WAS PREPARED FOR ASSESSMENT PURPOSE ONLY.

Upper Left:  
123°24'14"W 43°13'32"N  
4147495E 581559N ft

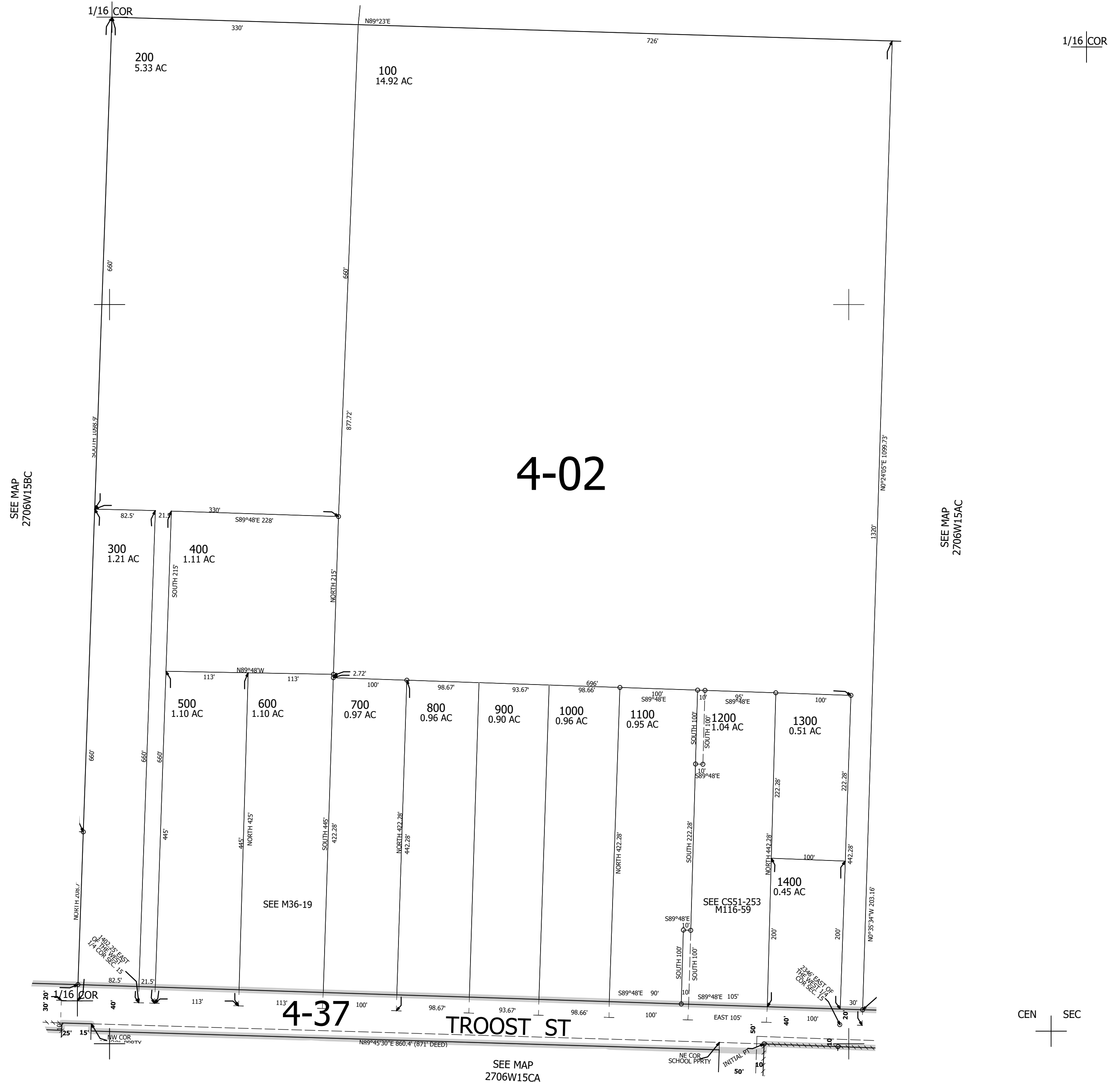
SE1/4 NW1/4 SEC.15 T.27S. R.06W. W.M.  
DOUGLAS COUNTY  
1" = 100'

Date Exported 2026-02-11

270615BD  
ROSEBURG

CANCELLED NOS:  
1101

SEE MAP  
2706W15



CEN SEC

SEE MAP  
2706W15CA

270615BD  
ROSEBURG  
Lower Right:  
123°23'46"W 43°13'16"N  
4149467E 579820N ft