

THIS MAP WAS PREPARED FOR ASSESSMENT PURPOSE ONLY.

Upper Left:
123°24'29"W 43°13'32"N
4146342E 581615N ft

SW1/4 NW1/4 SEC.15 T.27S. R.06W. W.M.
DOUGLAS COUNTY
1" = 100'

Date Exported 2026-02-11

270615BC
ROSEBURG

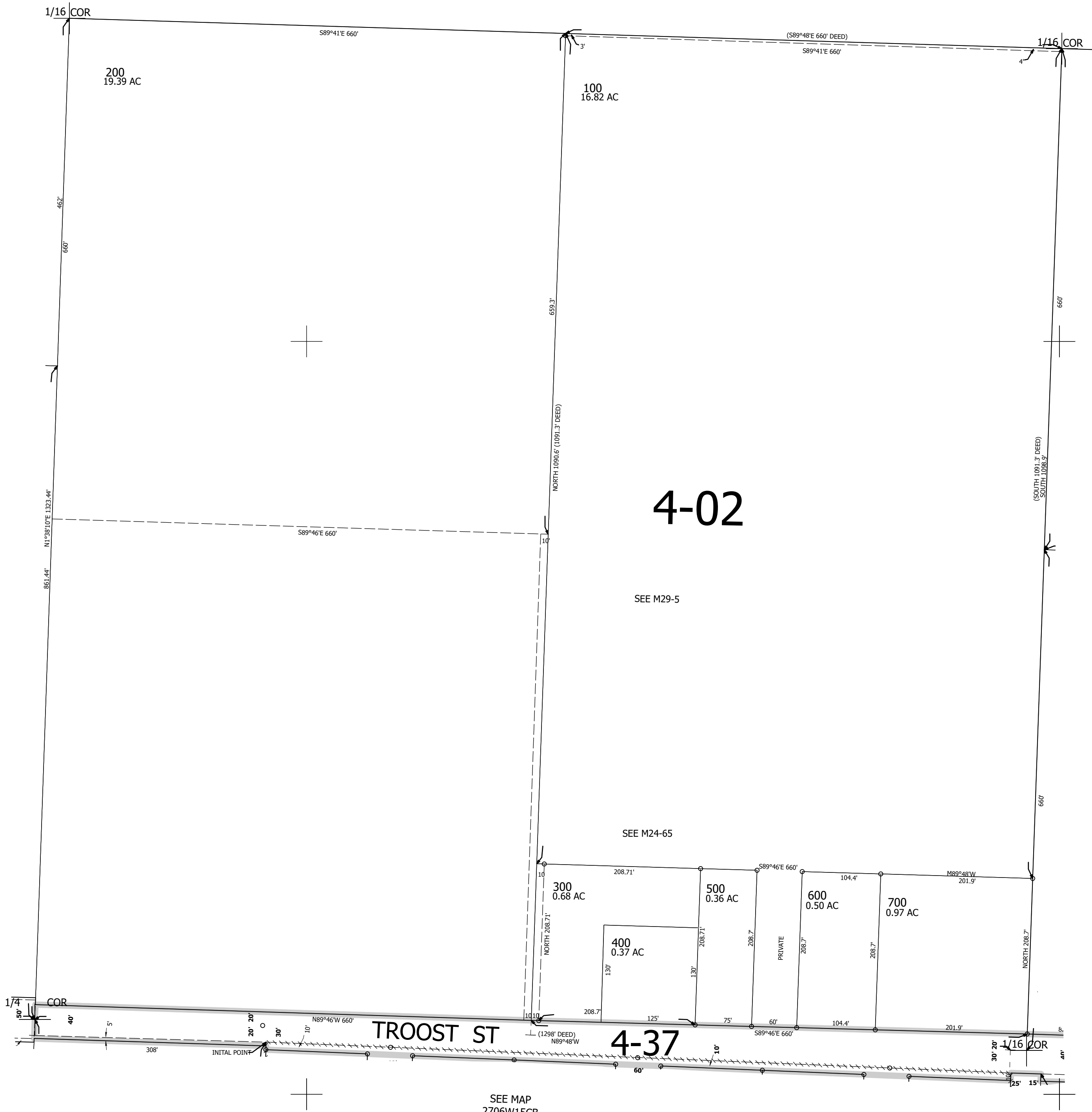
CANCELLED NOS:

SEE MAP
2706W16AD

SEE MAP
2706W15BD

SEE MAP
2706W15

SEE MAP
2706W15CB



270615BC
ROSEBURG

Lower Right:
123°24'2"W 43°13'16"N
4148314E 579876N ft