

THIS MAP WAS PREPARED FOR ASSESSMENT PURPOSE ONLY.

Upper Left:  
123°23'35"W 43°13'32"N  
4150390E 581405N ft

SE1/4 NE1/4 SEC.15 T.27S. R.06W. W.M.  
DOUGLAS COUNTY  
1" = 100'

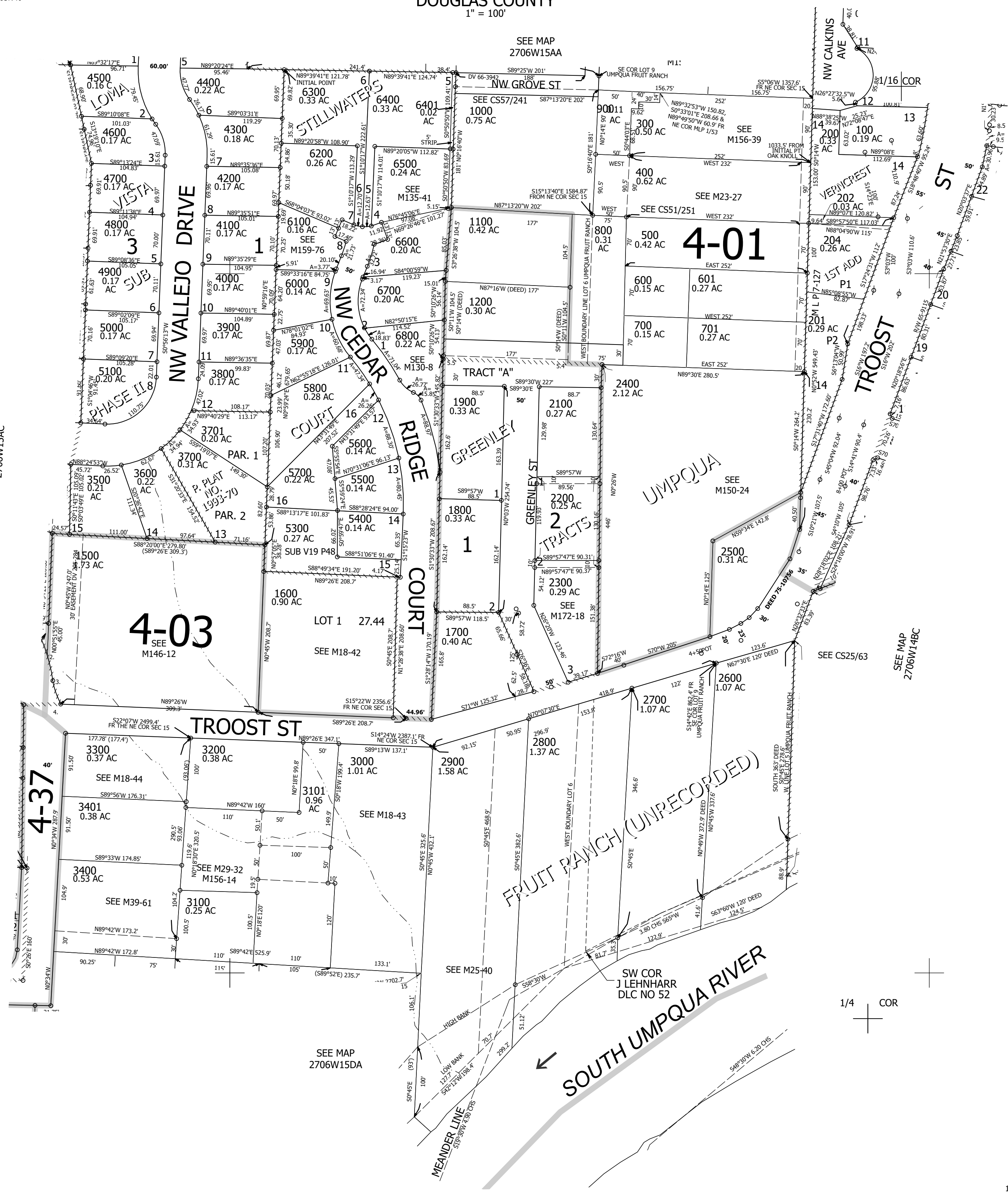
Date Exported 2026-02-12

270615AD  
Roseburg

CANCELLED NOS:  
203 1501 1201  
801 2000 1401  
1400 1300 1601  
6501 6502 5200  
301 302 2201

- PARCEL 1500
- 1. N0°56'45"E 73.27'
- 2. LC=51°47'30"E 35.34'
- 3. LC=52°1'34"04"E 42.69'
- 4. N88°16'19"W 25.34'

1/16 COR



1/16 COR

1/4 COR

270615AD  
Roseburg

Lower Right:  
123°23'7"W 43°13'15"N  
4152363E 579666N ft