

THIS MAP WAS PREPARED FOR ASSESSMENT PURPOSE ONLY.

NW1/4 NE1/4 SEC.15 T.27S. R.6W. W.M. DOUGLAS COUNTY

1" = 100'

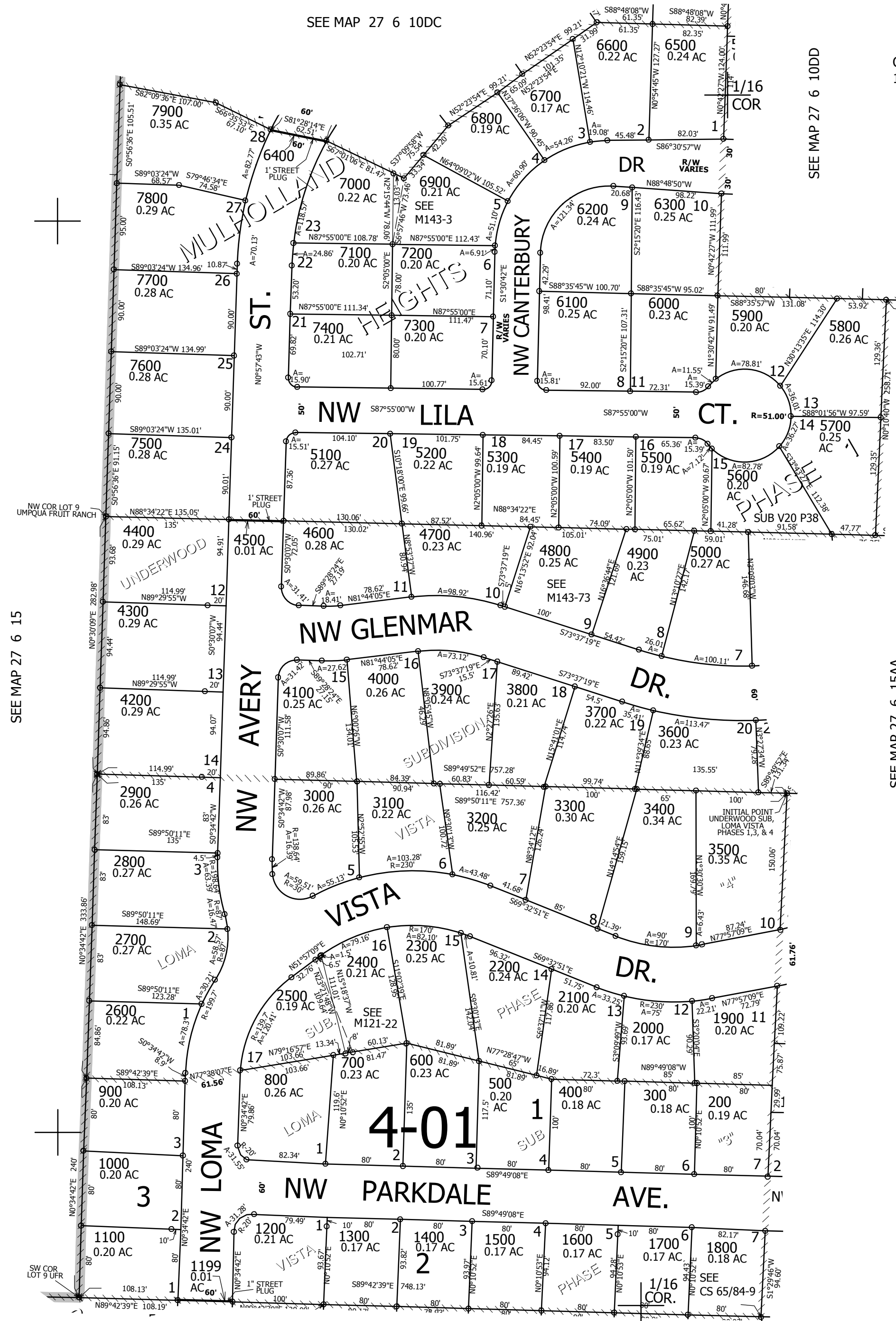
REVISED ON 10-3-16

27 6 15AB ROSEBURG

1/4 COR

SEE MAP 27 6 10DD

CANCELLED NO'S 100 899 7001



SEE MAP 27 6 15

SEE MAP 27 6 15AA

1/16 COR

SEE MAP 27 6 15AC

581,500

4,151,000

27 6 15AB ROSEBURG