

THIS MAP WAS PREPARED FOR ASSESSMENT PURPOSE ONLY.

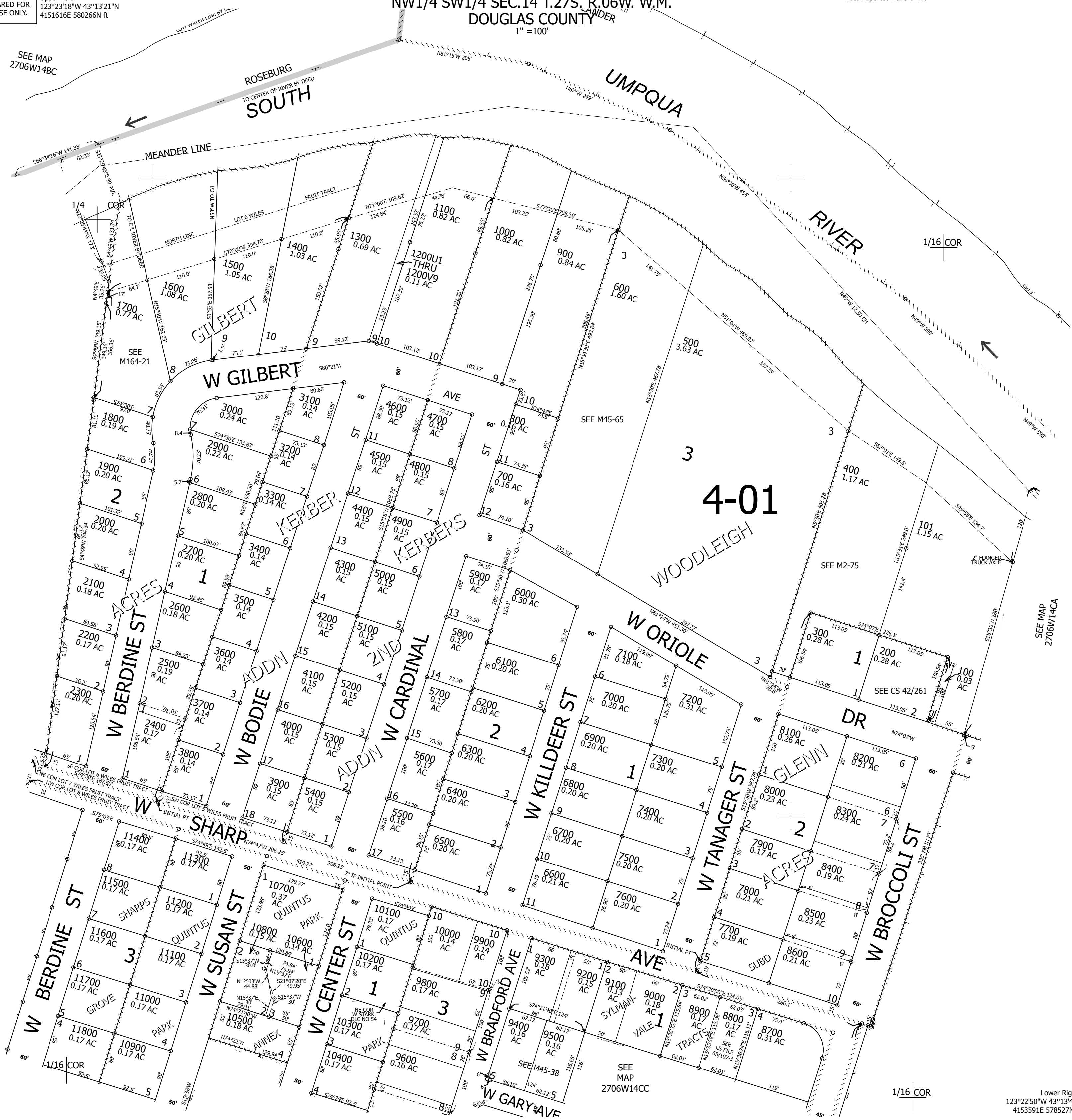
Upper Left:
123°23'18"W 43°13'21"N
4151616E 580266N ft

NW1/4 SW1/4 SEC.14 T.27S. R.06W. W.M.
DOUGLAS COUNTY
1" = 100'

Date Exported 2025-02-19

270614CB
Roseburg

CANCELLED NOS:
2401



SEE MAP
2706W15DA

SEE MAP
2706W14BC

SEE MAP
2706W14CA

270614CB
Roseburg

Lower Right:
123°22'50"W 43°13'4"N
4153591E 578527N ft