

THIS MAP WAS PREPARED FOR ASSESSMENT PURPOSE ONLY.

Upper Left:
123°22'59"W 43°13'33"N
4153070E 581463N ft

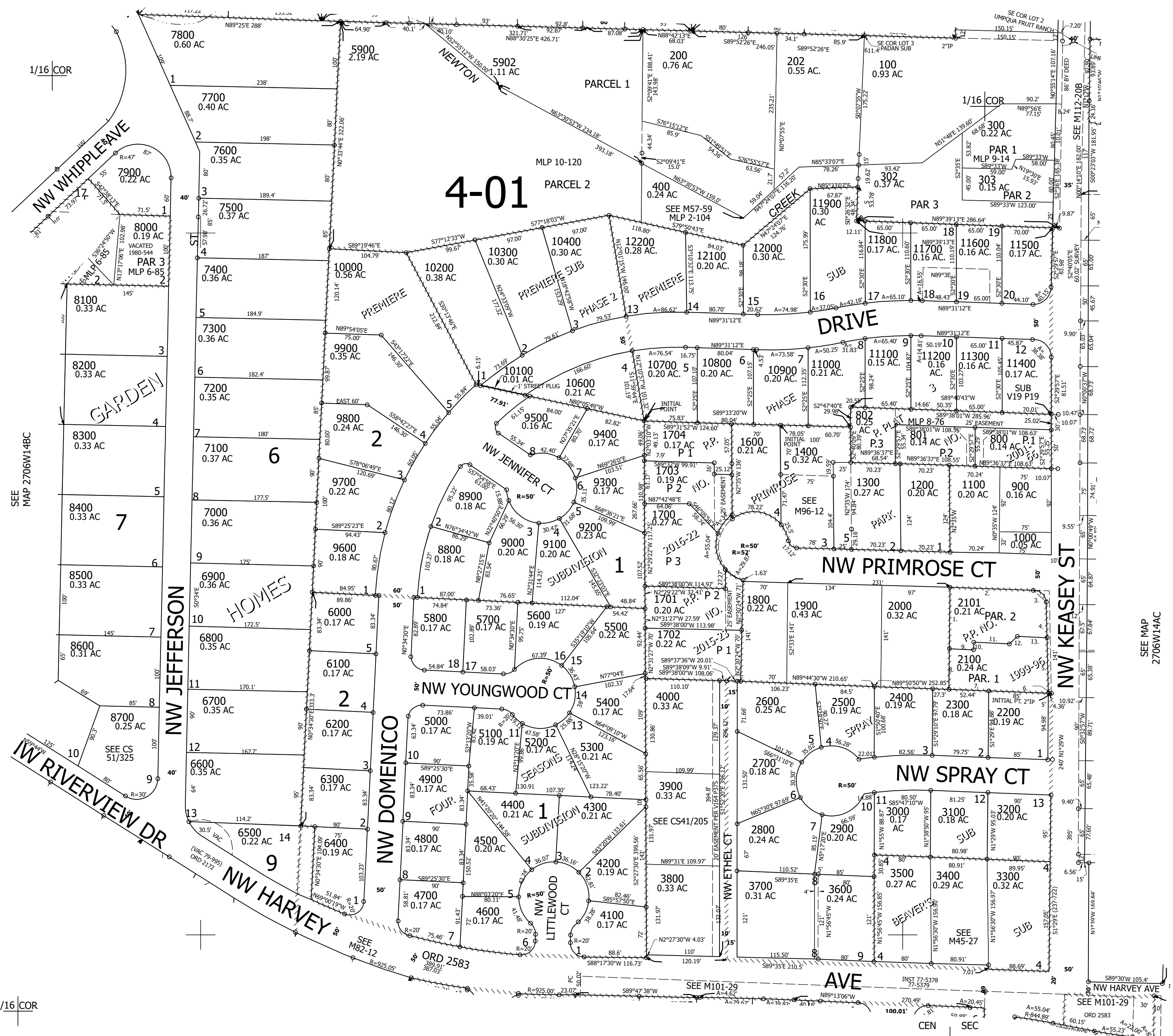
SE1/4 NW1/4 SEC.14 T.27S. R.06W. W.M.
DOUGLAS COUNTY
1"SEE100"
MAP
2706W14BA

Date Exported 2025-07-24

270614BD
Roseburg

CANCELLED NOS:
8001.8002.1500
5903.301.201
401.500.600
700.5904.11501
11201.11602.10500
11601.11701.803
804.5901.1401

- PP 1999-96
- 1. N2°33'56"W 76.89'
- 2. N89°34'04"E 120.05'
- 3. R=20' A=30.85'
- 4. S1°58'57"E 35.21'
- 5. S1°58'57"E 88.65'
- 6. S89°22'08"W 85.62'
- 7. S89°33'49"W 52.45'
- 8. N2°33'56"W 52.45'
- 9. N89°34'04"E 34.66'
- 10. N1°16'17"W 10.83'
- 11. N89°34'04"E 50.7'
- 12. N43°43'39"E 15.64'
- 13. N89°21'14"E 42.04'



1/16 COR

SEE MAP 2706W14BC

1/16 COR

SEE MAP 2706W14CA

SEE MAP 2706W14C

270614BD
Roseburg

Lower Right:
123°22'31"W 43°13'17"N
4155045E 579724N ft