

SW1/4 NW1/4 SEC.14 T.27S. R.6W. W.M.
DOUGLAS COUNTY

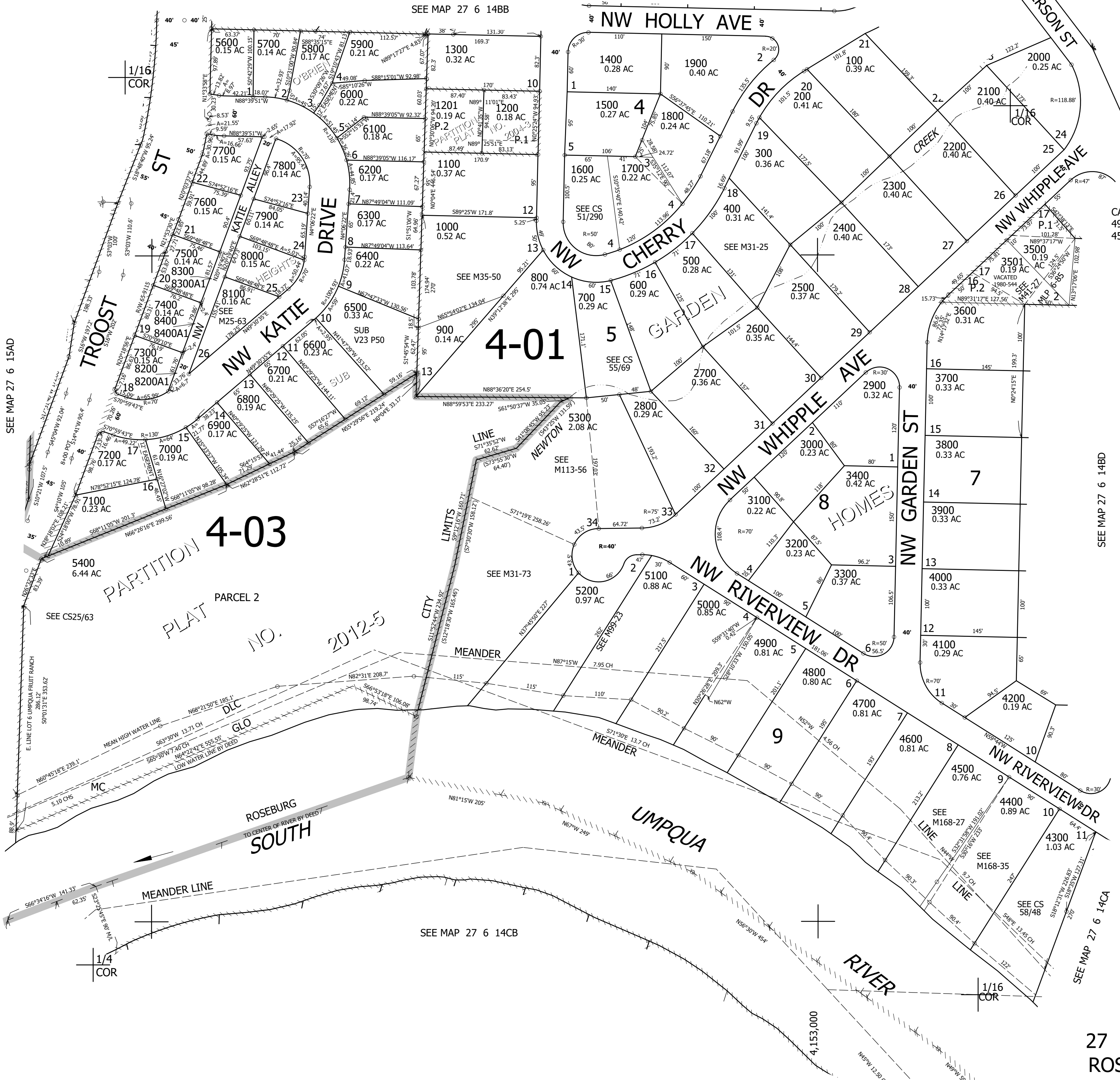
REVISED ON
6-7-22

27 6 14BC
ROSEBURG

THIS MAP WAS PREPARED FOR
ASSESSMENT PURPOSE ONLY.

1" = 100'

SEE MAP 27 6 14BB



CANCELLED NO'S
4901 5501 5401
4501 5500

SEE MAP 27 6 15AD

SEE MAP 27 6 14BD

SEE MAP 27 6 14CA

SEE MAP 27 6 14CB

580,000

27 6 14BC
ROSEBURG