

THIS MAP WAS PREPARED FOR ASSESSMENT PURPOSE ONLY.

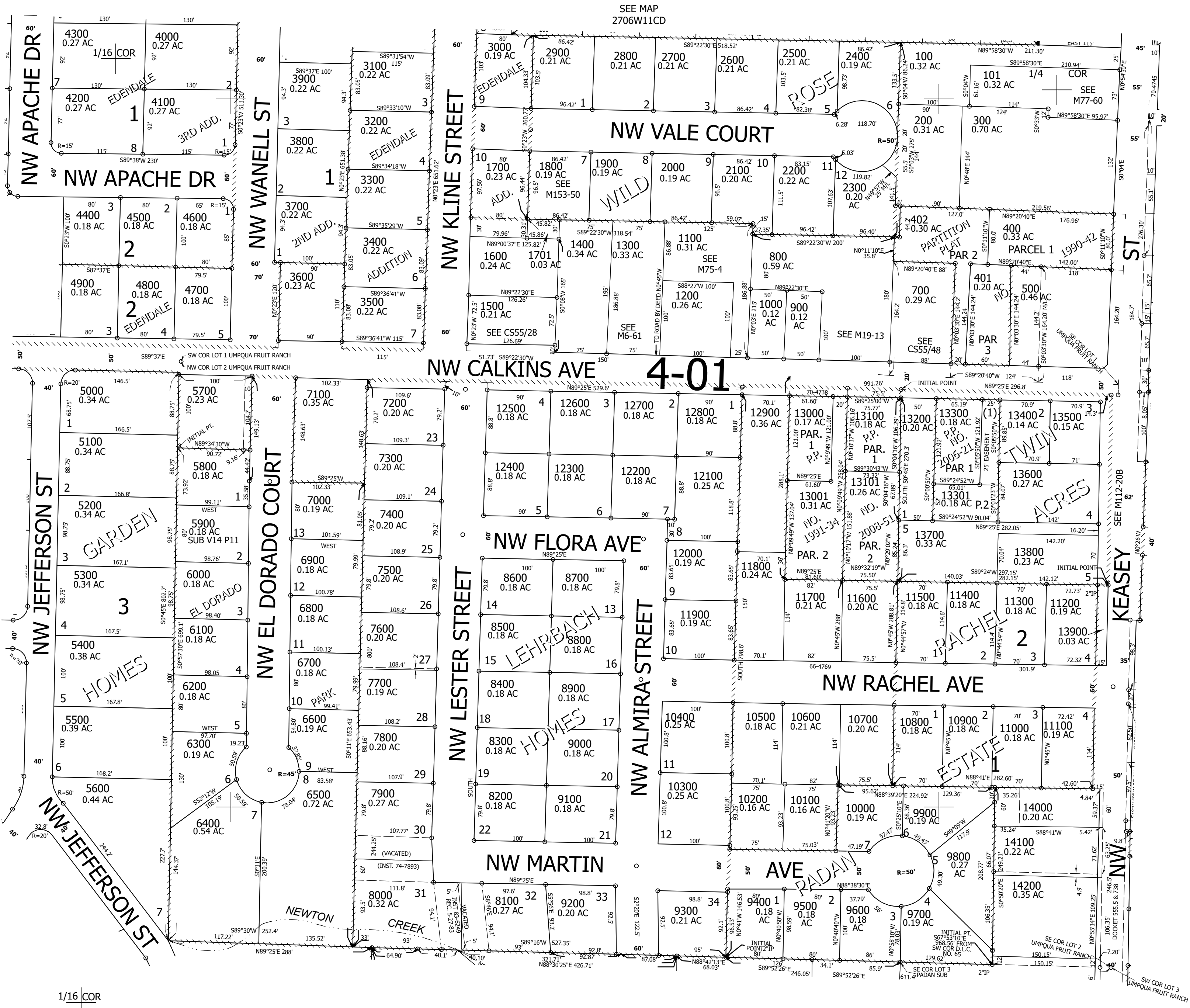
Upper Left:
123°23'W 43°13'46"N
4153033E 582788N ft

NE1/4 NW1/4 SEC.14 T.27S. R.06W. W.M.
DOUGLAS COUNTY
1" = 100'

Date Exported 2026-03-17

270614BA
Roseburg

CANCELLED NOS:
600 2301 403



SEE MAP
2706W14AB

SEE MAP
2706W14AB

SEE MAP
2706W11CD

SEE MAP
2706W14BD

1/16 COR

1/16 COR

270614BA
Roseburg

Lower Right:
123°22'32"W 43°13'30"N
4155005E 581049N ft