

THIS MAP WAS PREPARED FOR ASSESSMENT PURPOSE ONLY.

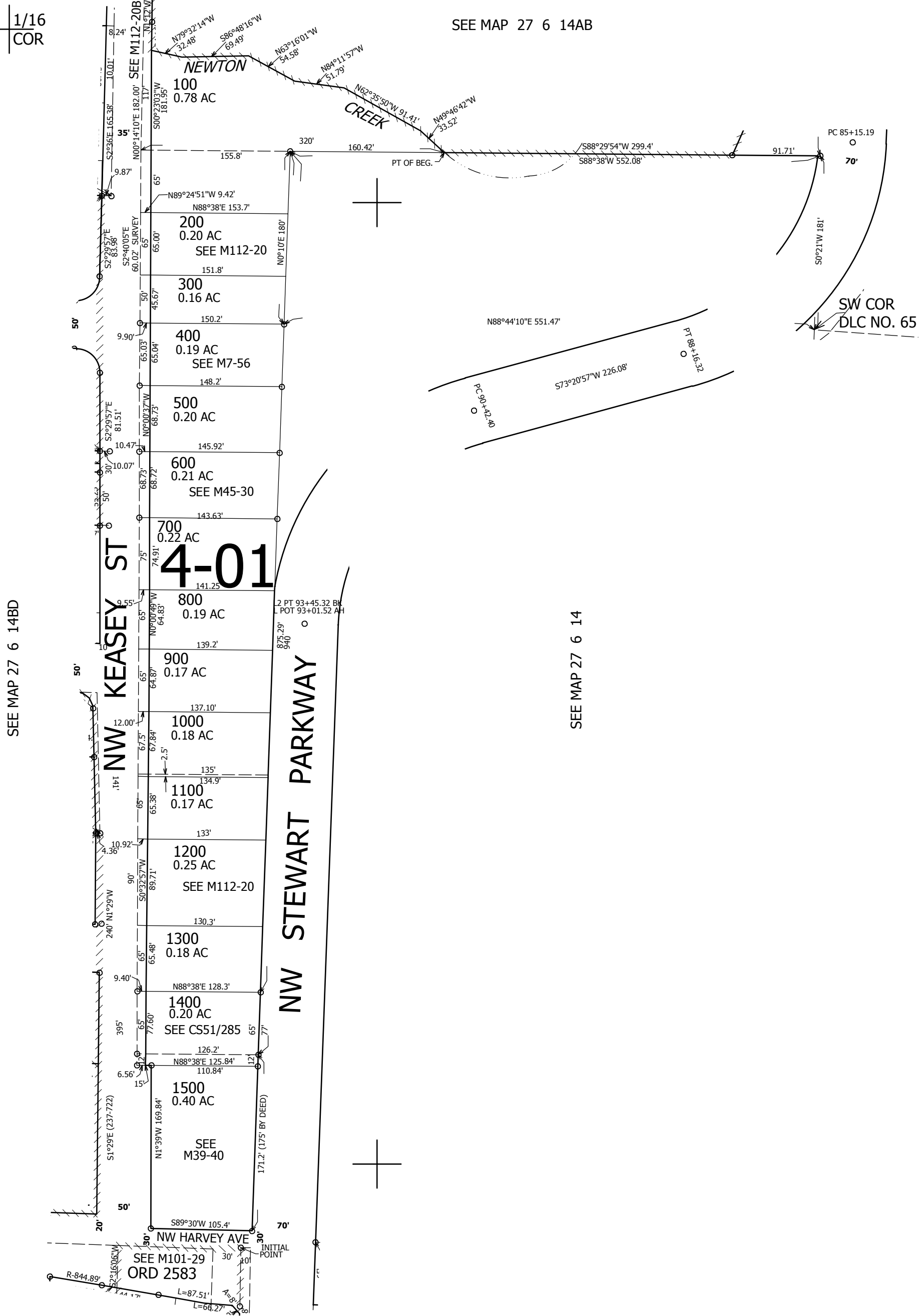
SW1/4 NE1/4 SEC.14 T.27S. R.6W. W.M. DOUGLAS COUNTY

REVISED ON
10-24-17

27 6 14AC ROSEBURG

1" = 100'

SEE MAP 27 6 14AB



SEE MAP 27 6 14BD

SEE MAP 27 6 14

SEE MAP 27 6 14DB

CANCELLED NO'S

580,000

4,156,000
27 6 14AC
ROSEBURG