

THIS MAP WAS PREPARED FOR ASSESSMENT PURPOSE ONLY.

NW1/4 NE1/4 SEC.14 T.27S. R.6W. W.M. DOUGLAS COUNTY

REVISED ON 2-27-18

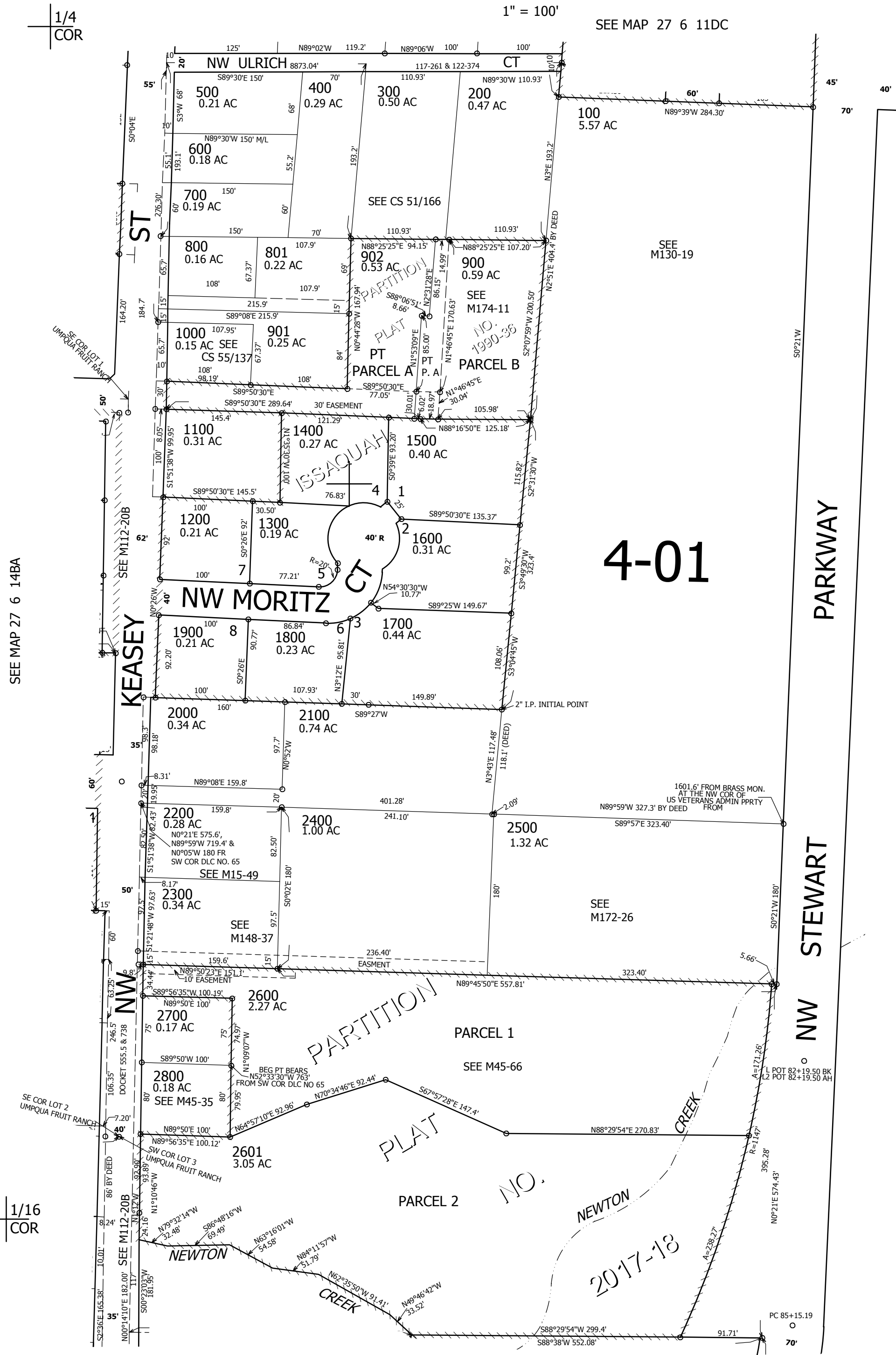
27 6 14AB ROSEBURG

1" = 100'

SEE MAP 27 6 11DC

1/16 COR

CANCELLED NO'S 903



SEE MAP 27 6 14BA

SEE MAP 27 6 14

4-01

SEE MAP 27 6 14C

1/16 COR

581,000

27 6 14AB ROSEBURG

4,156,000