

SE1/4 SE1/4 SEC.13 T.27S. R.6W. W.M.
DOUGLAS COUNTY

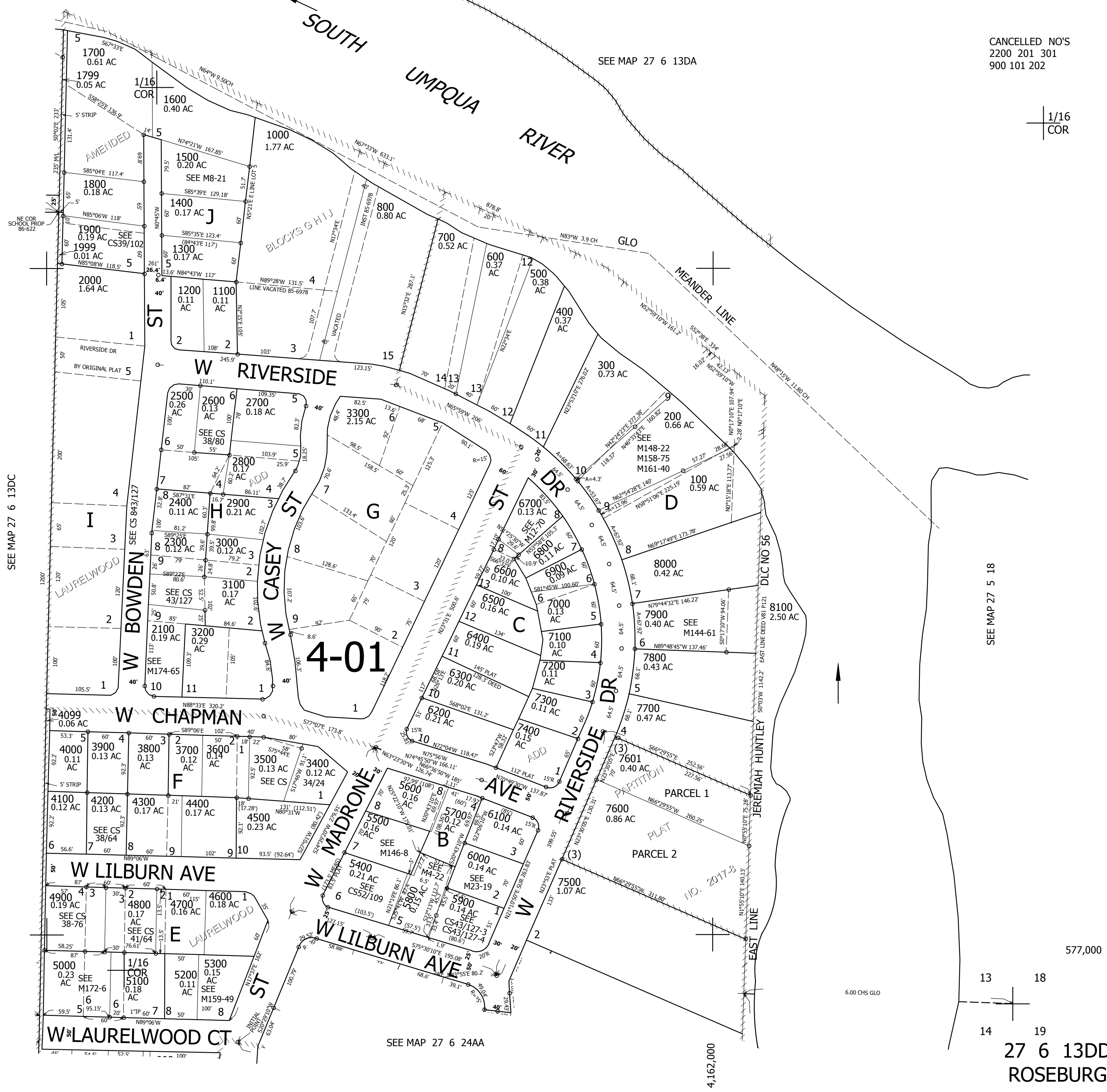
1" = 100'

REVISED ON
11-13-18

27 6 13DD
ROSEBURG

CANCELLED NO'S
2200 201 301
900 101 202

THIS MAP WAS PREPARED FOR
ASSESSMENT PURPOSE ONLY.



1/16
COR

SEE MAP 27 6 13DA

SEE MAP 27 6 13DC

SEE MAP 27 5 18

SEE MAP 27 6 24AA

4,162,000

577,000

13 18

14 19

27 6 13DD
ROSEBURG