

THIS MAP WAS PREPARED FOR ASSESSMENT PURPOSE ONLY.

Upper Left:
123°21'32"W 43°13'4"N
4159391E 578326N ft

SW1/4 SE1/4 SEC.13 T.27S. R.06W. W.M.
DOUGLAS COUNTY
1" = 100'

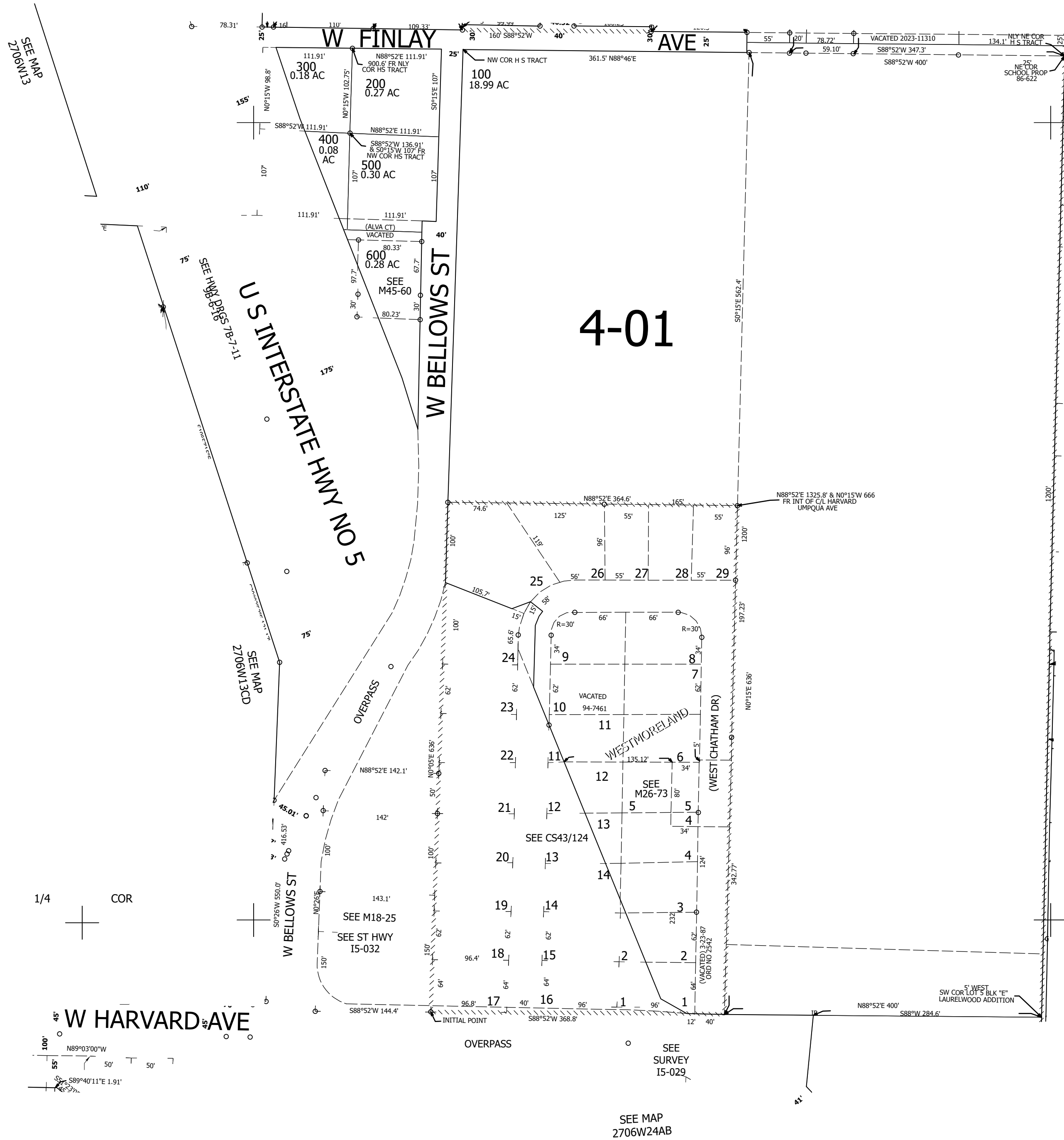
Date Exported 2023-11-22

270613DC
Roseburg

CANCELLED NOS:
800 900 1000
1100 1200 1300
1400 1401 1700
700 1500 1600

1/16 COR

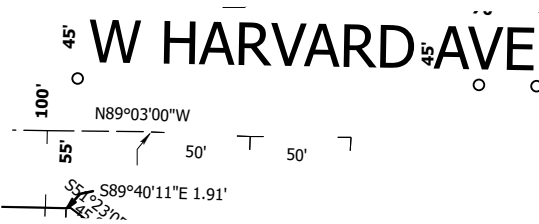
SEE MAP
2706W13DB



SEE MAP
2706W13DD

1/16 COR

SEE MAP
2706W24AB



270613DC
Roseburg

Lower Right:
123°21'5\"/>