

THIS MAP WAS PREPARED FOR ASSESSMENT PURPOSE ONLY.

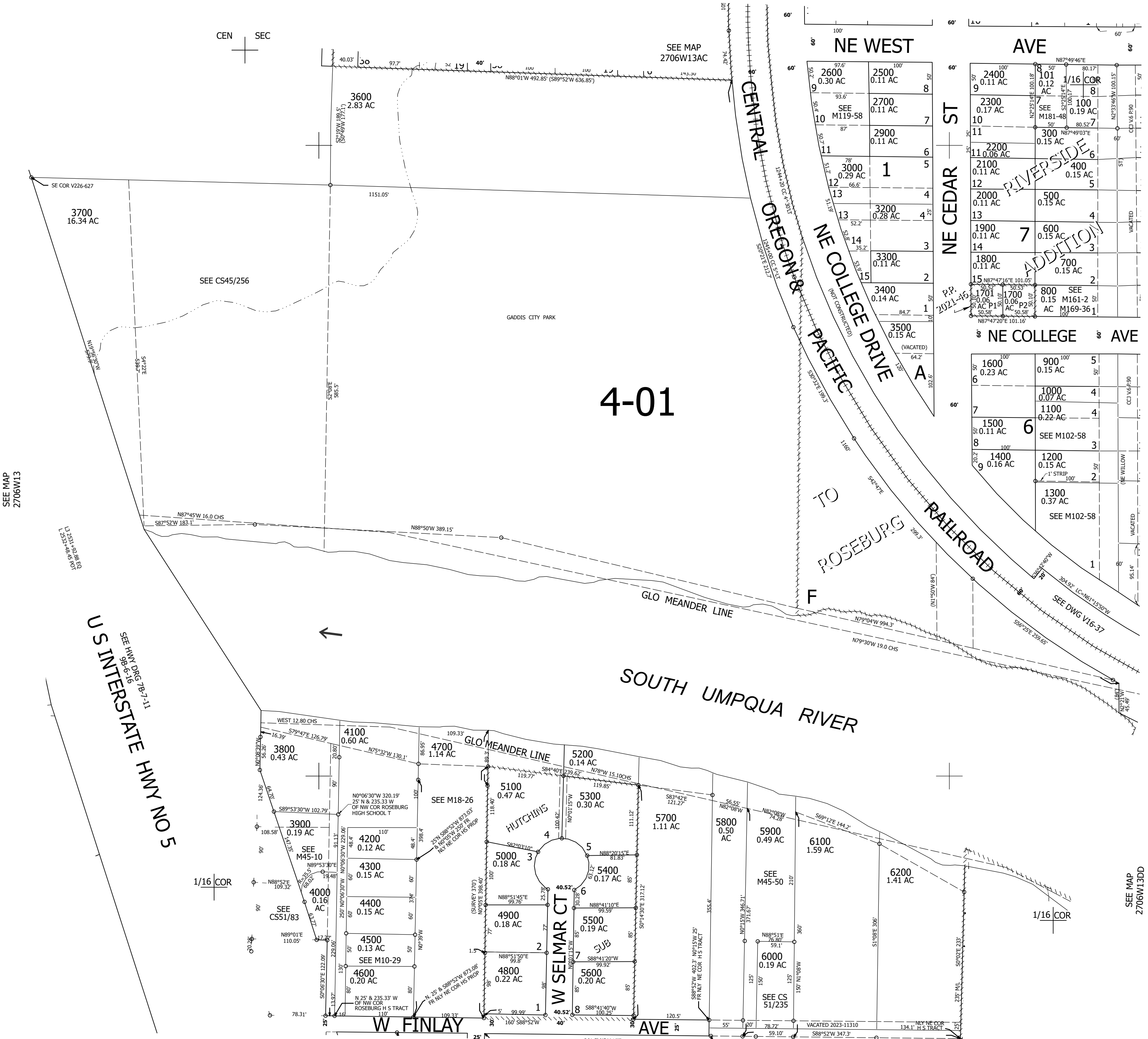
Upper Left:
123°21'31"W 43°13'19"N
4159473E 579771N ft

NW1/4 SE1/4 SEC.13 T.27S. R.06W. W.M.
DOUGLAS COUNTY
1" = 100'

Date Exported 2026-03-24

270613DB
Roseburg

CANCELLED NOS:
3100 5201 3700M1



4-01

SEE MAP
2706W13DA

SEE MAP
2706W13

SEE MAP
2706W13DD

270613DB
Roseburg

Lower Right:
123°21'4"W 43°13'2"N
4161445E 578033N ft